



Alington Terrace, Dorchester, DT1 1JS

Dorchester

Bedrooms: 2

Bathrooms: 1

Receptions: 2

This charming terraced home is perfectly positioned in one of Dorchester's most convenient and desirable central locations, just a short walk from the town centre, Waitrose and an excellent range of local amenities. Combining character features with thoughtful modern updates, the property offers stylish yet practical living throughout. *No forward chain*

The ground floor is centred around a welcoming open-plan living/dining room, enhanced by high ceilings and a feature fireplace, creating a light and sociable space to relax or entertain. To the rear, the kitchen is both attractive and functional, fitted with a range of eye and base level units, solid wood worktops, a Belfast sink, integrated electric oven and five-ring gas hob. A rear vestibule provides access to a convenient downstairs W.C. and leads out to the garden.

Upstairs, there are two generous double bedrooms along with a spacious shower room, fitted with a modern white suite and walk-in shower.

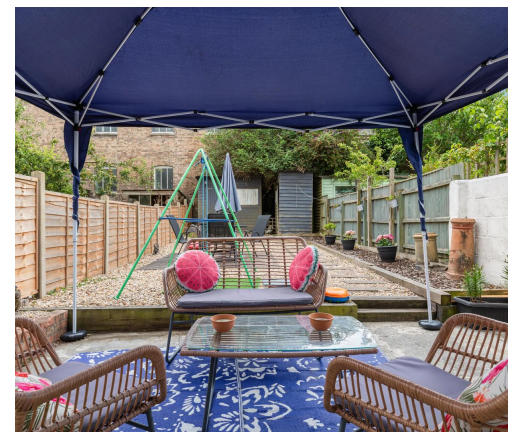
Outside, the rear garden is a real highlight - a great size, fully enclosed and designed for low maintenance, with a seating area and gravelled section, ideal for relaxing or entertaining. There is also access to useful storage sheds.

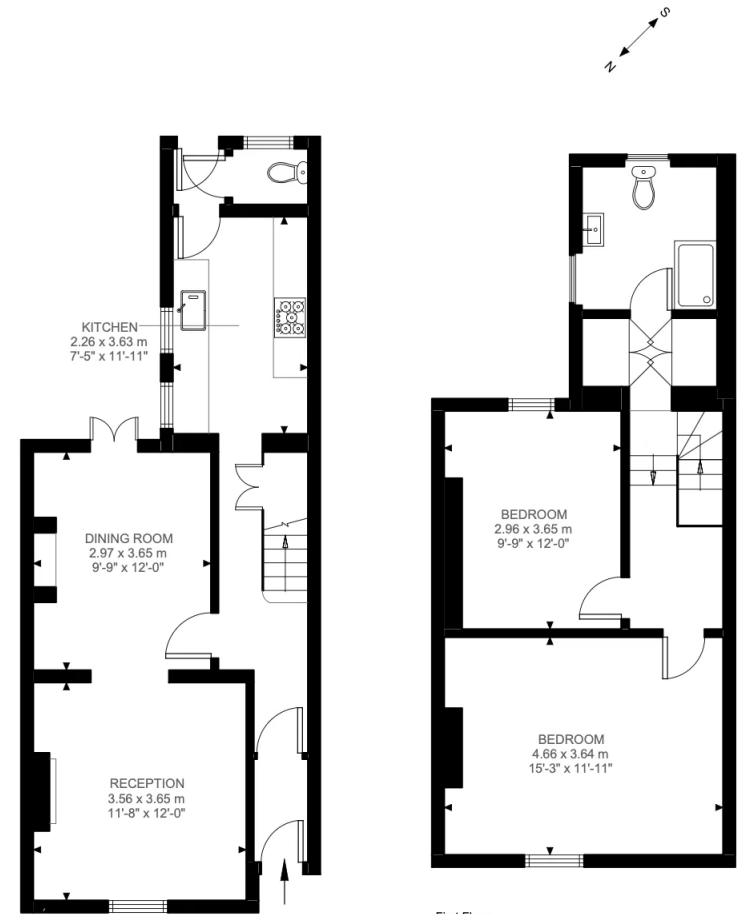




Residents' permit parking is available for the car park opposite (approximately £200 per year).

Dorchester is a vibrant and historic county town, offering a fantastic blend of independent shops, well-known retailers, cafes, restaurants and cultural attractions including museums and cinemas. Surrounded by beautiful Dorset countryside and within easy reach of the Jurassic Coast, it offers an exceptional lifestyle balance. Excellent transport links, including mainline rail services to London Waterloo and Bristol, make it a popular choice for both commuters and families alike.





Ground Floor
490 ft²

First Floor
475 ft²

Alington St, DT1
Approximate Gross Internal Area
89.70 SQ.M / 966 SQ.FT

KEY: CH = Ceiling Height
[Restricted Head Height]

Illustration for identification purposes only. Not to scale.
Floor Plan Drawn According To RICS Guidelines.