

# clever



## 36 Lipson Road

, Plymouth, PL4 8PW

**£125**

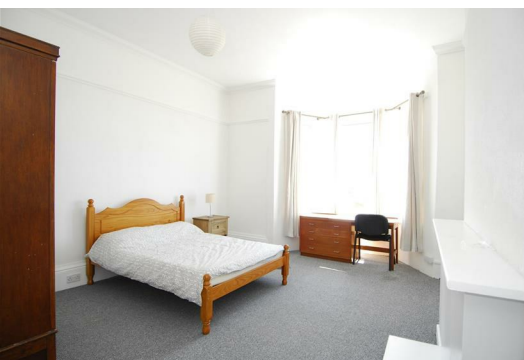


Nestled in the heart of the vibrant student hub on Lipson Road, Plymouth, this spacious 9-bedroom house is a gem waiting to be discovered. Perfectly located within walking distance of shops, supermarkets, the main university campus, and the Arts University, convenience is at your doorstep.

As you step inside, you are greeted by a generous sitting area, ideal for relaxing or hosting gatherings with friends. The property boasts not just one, but two kitchens, offering ample space for culinary creations and socialising. With two bathrooms, including a large shower room, the morning rush will be a thing of the past.

This house is a dream for a group of students with varying budgets, offering a mix of affordability and comfort. Whether you're studying hard or unwinding after a long day of lectures, this property provides the perfect setting to make the most of your university experience.

Don't miss out on the opportunity to live in this fantastic student-friendly house that combines practicality with proximity to all the amenities you need. Embrace the convenience and comfort that this property on Lipson



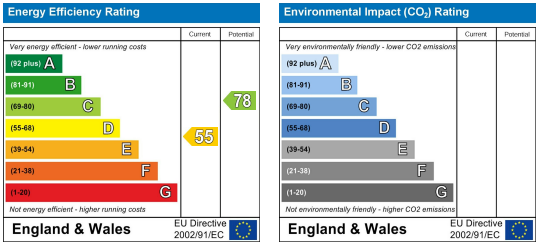
Area Map



Floor Plans



Energy Efficiency Graph



These particulars, whilst believed to be accurate are set out as a general outline only for guidance and do not constitute any part of an offer or contract. Intending purchasers should not rely on them as statements of representation of fact, but must satisfy themselves by inspection or otherwise as to their accuracy. No person in this firms employment has the authority to make or give any representation or warranty in respect of the property.