



**Guide Price**  
**£320,000**

**Freehold**

3x  2x  1x 

**Siegfried Close,  
Sellindge, Ashford,  
Kent, TN25**

**OVER 60?**

Secure this property  
for up to **59% less!**

*Wards*  
Helping you move forwards



## Main features

- New build in 2019 with an NHBC remaining until 2029
- Garage and driveway
- Beautifully presented with neutral decor throughout
- En-suite shower room and downstairs cloakroom
- Excellent village location with several commuting links nearby

## Accommodation

### GROUND FLOOR

Entrance Hall

Lounge: 13'11" x 12'1" (4.24m x 3.69m)

Kitchen/Diner: 15'6" x 9'5" (4.73m x 2.87m)

Cloakroom

### FIRST FLOOR

Landing

Bedroom 1: 9'8" x 9'2" (2.95m x 2.80m)

En-Suite Shower Room: 5'7" x 5'5" (1.70m x 1.65m)

Bedroom 2: 10'10" x 8'7" (3.30m x 2.62m)

Bedroom 3: 11'7" x 6'7" (3.53m x 2.01m)

Bathroom: 6'7" x 5'6" (2.01m x 1.68m)

### OUTSIDE

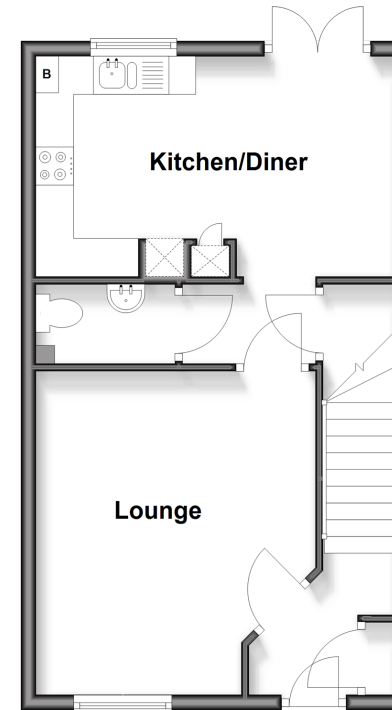
Off Road Parking

Garage: 19'0" x 9'5" (5.80m x 2.87m)

Front & Rear Gardens

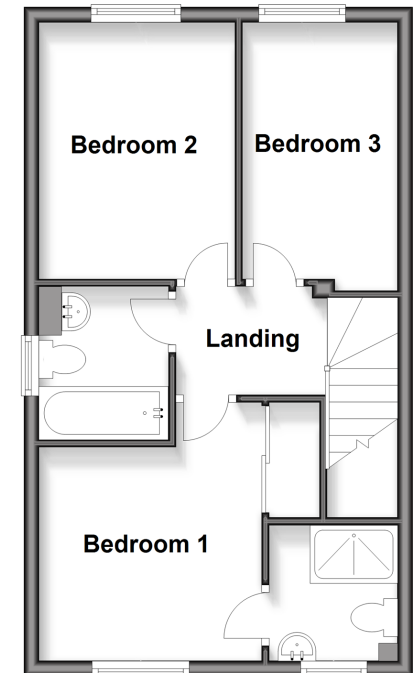
### Ground Floor

Approx. 39.8 sq. metres (428.5 sq. feet)



### First Floor

Approx. 39.8 sq. metres (428.5 sq. feet)



Call Hythe - 01303 267473 ■ [wardsof Kent.co.uk](http://wardsof Kent.co.uk)

- Legal advice should be taken to verify fixtures/fittings, planning, alterations and/or lease details
- Appliances & services are untested, dimensions are approximate and floor plans are not to scale
- Through a Homewise Home For Life Plan people aged 60+ can secure this property for up to 59% less, by purchasing a Lifetime Lease



12825254/20260214/MEL/MIB