



Marshall Road | | Cambridge | CB1 7TY

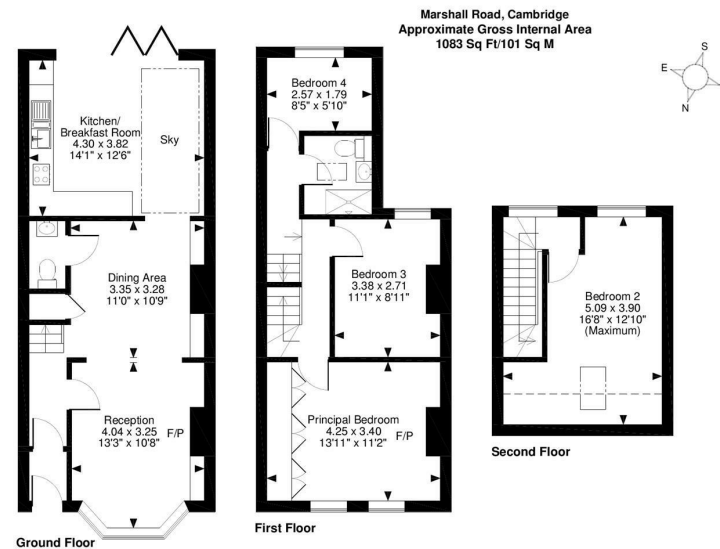
£2,700 Per Month

COOKE
CURTIS
& CO

Marshall Road |
 Cambridge | CB1 7TY
 £2,700 Per Month

Beautifully presented and upgraded mid-terrace Victorian house located in a desirable residential location just off Hills Road. Well placed for access to the City Centre, Rail station, and Addenbrookes Hospital and within easy reach of the M11. Residents' parking scheme in place.

- 100 sqm / 1076 sqft
- EPC - E / 53
- Gas central heating
- Residents permit parking
- 4 bed / 1.5 bath / 1 recep
- Council tax band - D
- Enclosed rear garden
- Available July 2026



FOR ILLUSTRATIVE PURPOSES ONLY - NOT TO SCALE
 The position & size of doors, windows, appliances and other features are approximate only.
 --- Denotes restricted head height
 © ehouse. Unauthorised reproduction prohibited. Drawing ref. dig/8448430/AGI

Energy Efficiency Rating		Current	Potential
Very energy efficient - lower running costs			
(92 plus) A			
(81-91) B			
(69-80) C			
(55-68) D			75
(39-54) E		53	
(21-38) F			
(1-20) G			
Not energy efficient - higher running costs			
England & Wales		EU Directive 2002/91/EC	

Council Tax Band D
 EPC Rating E

40 High Street
 Trumpington
 Cambridge
 Cambridgeshire
 CB2 9LS
 01223 508050
 Lettings@cookecurtis.co.uk
 cookecurtis.co.uk