

4 Chapel Mews Castle Street Shrewsbury SY1 2BG



2 Bedroom Apartment
Offers In The Region Of £170,000

The features

- OFFERED FOR SALE WITH NO UPWARD CHAIN
- CONVENIENT TUCKED AWAY LOCATION CLOSE TO AMENITIES
- 2 BEDROOMS AND BATHROOM
- VIEWING AVAILABLE
- TWO BEDROOM DUPLEX APARTMENT
- LOUNGE/DINING ROOM, GOOD SIZED KITCHEN
- PERFECT FOR FIRST TIME BUYER OR LOCK UP AND GO
- EPC RATING D



***** 2 BEDROOM DUPLEX STYLE TOWN CENTRE APARTMENT *****

An opportunity for first time buyer, investor or those looking for a lock up and go - this deceptively spacious two bedroom apartment is offered for sale with no upward chain with spacious accommodation over two floors.

Tucked away in Castle Court, in the heart of the Town Centre, a stones throw from all of the Town amenities and a short stroll from the Railway Station.

The accommodation briefly comprises spacious Lounge/Dining Room, good sized Kitchen, First Floor galleried style Landing/Study area, 2 double Bedrooms and Bathroom.

Offered for sale with no upward chain.

Property details

LOCATION

Tucked away in Castle Court, in the heart of the Town Centre, a stones throw from all of the Town amenities and a short stroll from the Railway Station.

LOUNGE/DINING ROOM

Glazed door opens into the spacious Lounge/Dining area with feature mirrored wall, wooden block flooring, electric heater, media point. Opening to

KITCHEN/BREAKFAST ROOM

fitted with range of units incorporating single drainer sink set into base cupboard. Further range of cupboards and drawers with work surfaces over and having space beneath for washing machine, inset 4 ring hob with extractor hood over and double oven and grill beneath, tiled surrounds and matching eye level wall units.

FIRST FLOOR LANDING

Stairs lead up to the spacious First Floor Landing/Study area, with feature mirrored wall, wood block floor, window to the rear.

BEDROOM 1

with feature arched window to the rear, wooden floor covering, electric heater.

BEDROOM 2

again with feature arched window to the rear, wooden floor covering, electric heater.

BATHROOM

with suite comprising corner panelled bath with mixer taps/shower attachment, wash hand basin and WC. Complementary tiled surrounds, feature arched window to the side.

GENERAL INFORMATION

TENURE

The property comprises of one of seven apartments and we are advised it will be sold as Freehold, owning 1/7th of the lease. Ground Rent and Service Charge to be confirmed though expected to be nominal due to there being no external/communal areas. We would recommend this is verified during pre-contract enquiries.

SERVICES

We are advised that mains water, electricity and drainage are connected.

COUNCIL TAX BANDING

As taken from the Gov.uk website we are advised the property is in Band C - again we would recommend this is verified during pre-contract enquiries.

FINANCIAL SERVICES

We are delighted to work in conjunction with the highly reputable `Ellis-Ridings Mortgage Solutions' who offer FREE independent advice and have access to the whole market place of Lenders. We can arrange for a no obligation quote or please visit our website Monks.co.uk where you will find the mortgage calculator. <https://monks.co.uk/buy/mortgage-calculator/>

LEGAL SERVICES

Again we work in conjunction with many of the Counties finest Solicitors and Conveyancers. Please contact us for further details and competitive quotations.

REMOVALS

We are proud to recommend Daniel and his team at Homemaster Removals. Please contact us for further details.

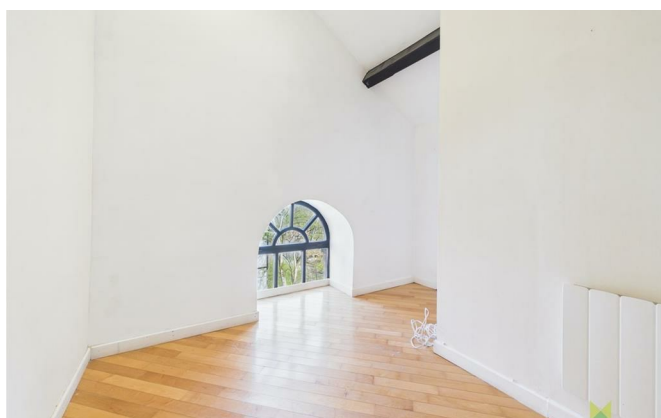
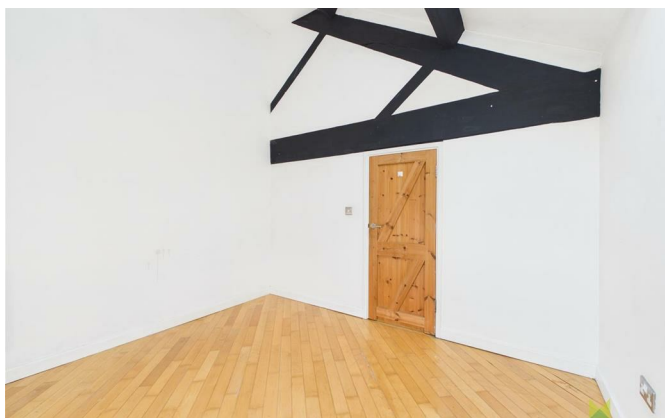
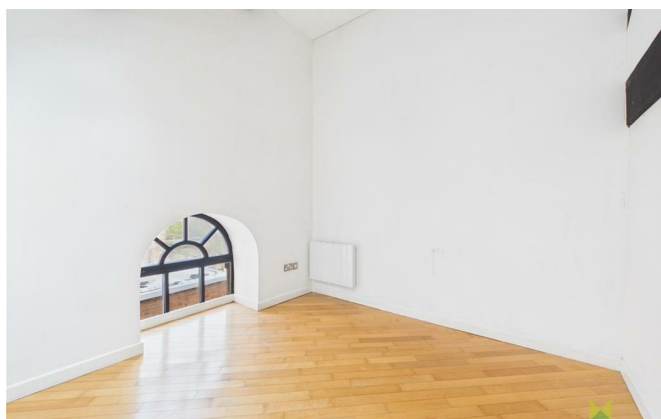
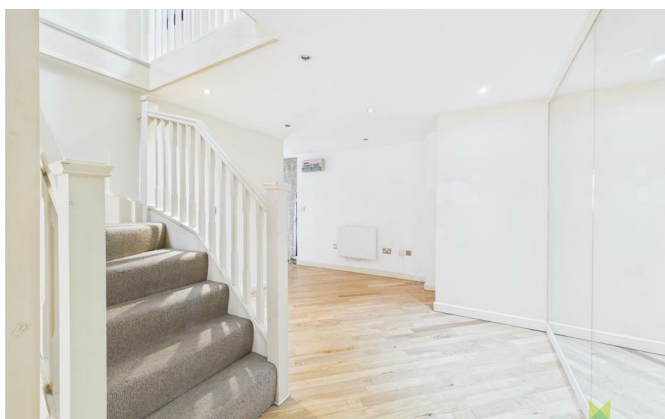
NEED TO CONTACT US

We are available 8.00am to 8.00pm Monday to Friday, 9.00 am to 4.00pm on a Saturday and 11.00am to 2.00pm on Sunday, maximising every opportunity to find your new home





MONKS



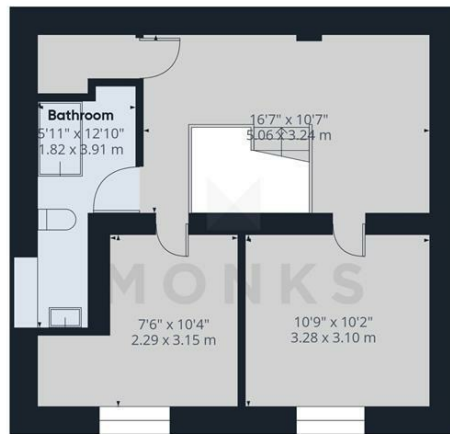
4 Chapel Mews, Castle Street, Shrewsbury, SY1 2BG.

2 Bedroom Apartment
Offers In The Region Of £170,000





Floor 0



Floor 1

Approximate total area¹⁾
426 ft²
39.6 m²

(1) Excluding balconies and terraces

Reduced headroom
..... Below 5 ft/1.5 m

Calculations reference the RICS IPMS 3C standard. Measurements are approximate and not to scale. This floor plan is intended for illustration only.

GIRAFFE360



Judy Bourne

Director at Monks
judy@monks.co.uk

Get in touch

Call. 01743 361422
Email. info@monks.co.uk
Click. www.monks.co.uk

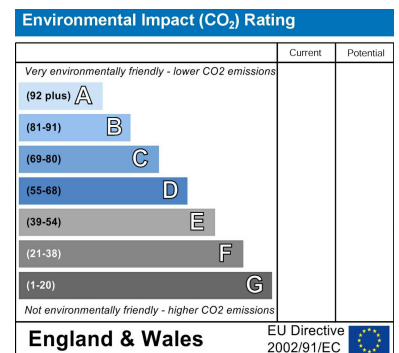
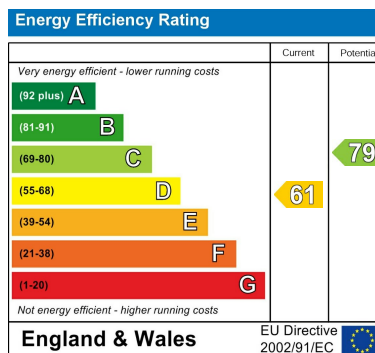
Shrewsbury office

10a-11 Shoplatch,
Shrewsbury, Shropshire, SY1

We're available 7 days a week

HOME – four words that define who,
and what we are:

Honest, Original, Motivated, Empathetic



Monks for themselves and for the vendors of this property, whose agents they are give notice that:

- These particulars provide a general outline only for the guidance of intended purchasers and do not constitute part of an offer or contract.
- All descriptions, dimensions and distances are approximate, references to state and condition, relevant permissions for use and occupation and other details are provided in good faith and believed to be correct.
- No person in the employment of Monks has any authority to make or give any representation or warranty whatever in relation to this property.
- Electricians and other appliances mentioned in these particulars have not been tested by Monks. Therefore prospective purchasers must satisfy themselves as to their working order.