



jordan fishwick

FALLOWFIELD
Brighton Grove



Brighton Grove, Fallowfield, M14 5JG

£950 Per Calendar Month



The Property

*** AVAILABLE JANUARY *** A lovely ground floor, one bedroom apartment with a contemporary finish throughout. Brighton Grove is a treelined street and is nestled in-between the large south Manchester parks of Platt Fields and Birchfields Park. There are excellent transport links to the MRI (inc. bike route) Christie Hospital, city centre, Didsbury, West Didsbury, and there are numerous amenities within just a one-mile radius. The property is ideally suited for a single occupant or couples only. In brief there is a good-sized lounge/kitchen, double bedroom and main bathroom. Fully furnished and modern in design throughout. The apartment also comes with unallocated on-site parking subject to availability. On street parking available without the need for a permit from the council, at the time of writing and has access to the shared communal gardens. Furnished. To view please contact our Didsbury office.

EPC Rating C // Council Tax Band A

Directions

M14 5JG



- Available January
- One Bedroom Apartment
- Ground Floor
- Furnished
- Single Occupancy or Couples
- Close to all Local Amenities
- Modern in Design Throughout
- Gated under-ground Parking & Bike Storage
- Council Tax Band A
- EPC Rating C

Postcode - M14 5JG

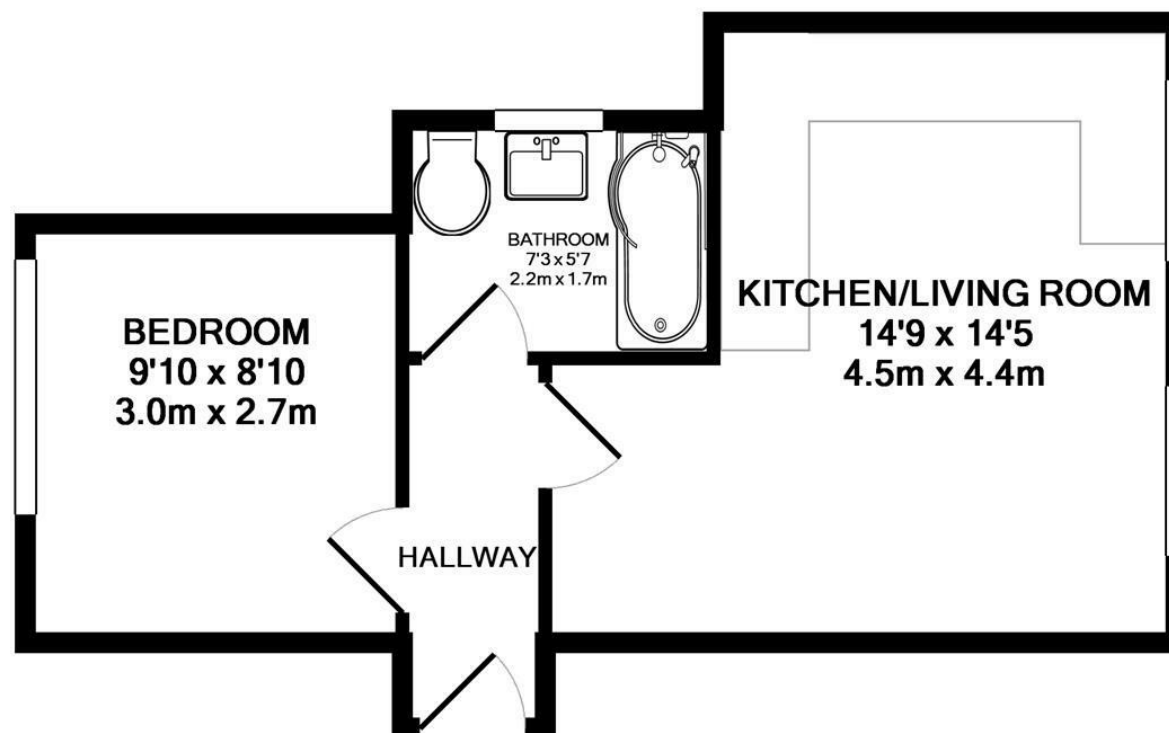
EPC Rating - C

Floor Area - sq ft

Local Authority - Manchester

Council Tax - A





FLAT 4, BIRCH COURT
TOTAL APPROX. FLOOR AREA 340 SQ.FT. (31.6 SQ.M.)

Whilst every attempt has been made to ensure the accuracy of the floor plan contained here, measurements of doors, windows, rooms and any other items are approximate and no responsibility is taken for any error, omission, or mis-statement. This plan is for illustrative purposes only and should be used as such by any prospective purchaser. The services, systems and appliances shown have not been tested and no guarantee as to their operability or efficiency can be given

Made with Metropix ©2014



These particulars are believed to be accurate but they are not guaranteed and do not form a contract. Neither Jordan Fishwick nor the vendor or lessor accept any responsibility in respect of these particulars, which are not intended to be statements or representations of fact and any intending purchaser or lessee must satisfy himself by inspection or otherwise as to the correctness of each of the statements contained in these particulars. Any floorplans on this brochure are for illustrative purposes only and are not necessarily to scale.

Offices also at: Wilmslow, Macclesfield, Hale, Sale, Chorlton, Glossop, Manchester & Salford

757-759 Wilmslow Road, Didsbury Village, Manchester

0161 445 4480

didsbury@jordanfishwick.co.uk
www.jordanfishwick.co.uk