



Apartment 29 Whinfell Court, Whirlow, Sheffield, S11 9QA



Apartment 29 Whinfell Court

Whirlow

Offers Around

£499,950

Nearly 2,000 sq ft – One of the Largest Apartments at Whinfell Court | Two Private Balconies, Open Views & Leisure Facilities | Now Under £500,000

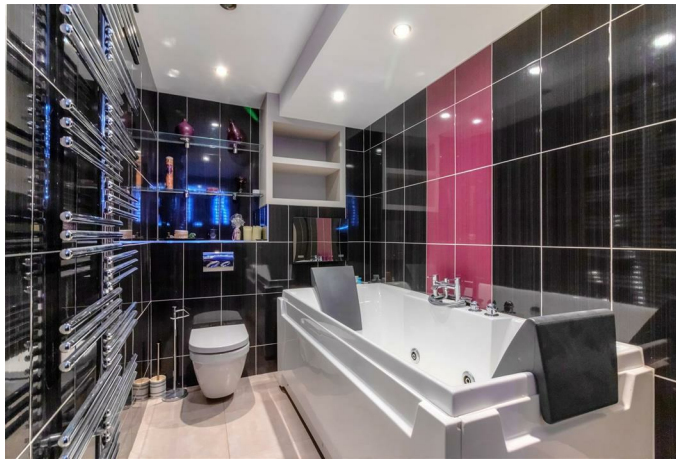
One of the largest apartments within Whinfell Court, extending to nearly 2,000 sq ft, this exceptionally spacious and upgraded two/three bedroom, two bathroom home offers a rare combination of scale, flexibility and open views. Significantly larger than most comparable apartments currently available within the development, the property provides proportions more akin to a house — setting it apart from others at this price point.

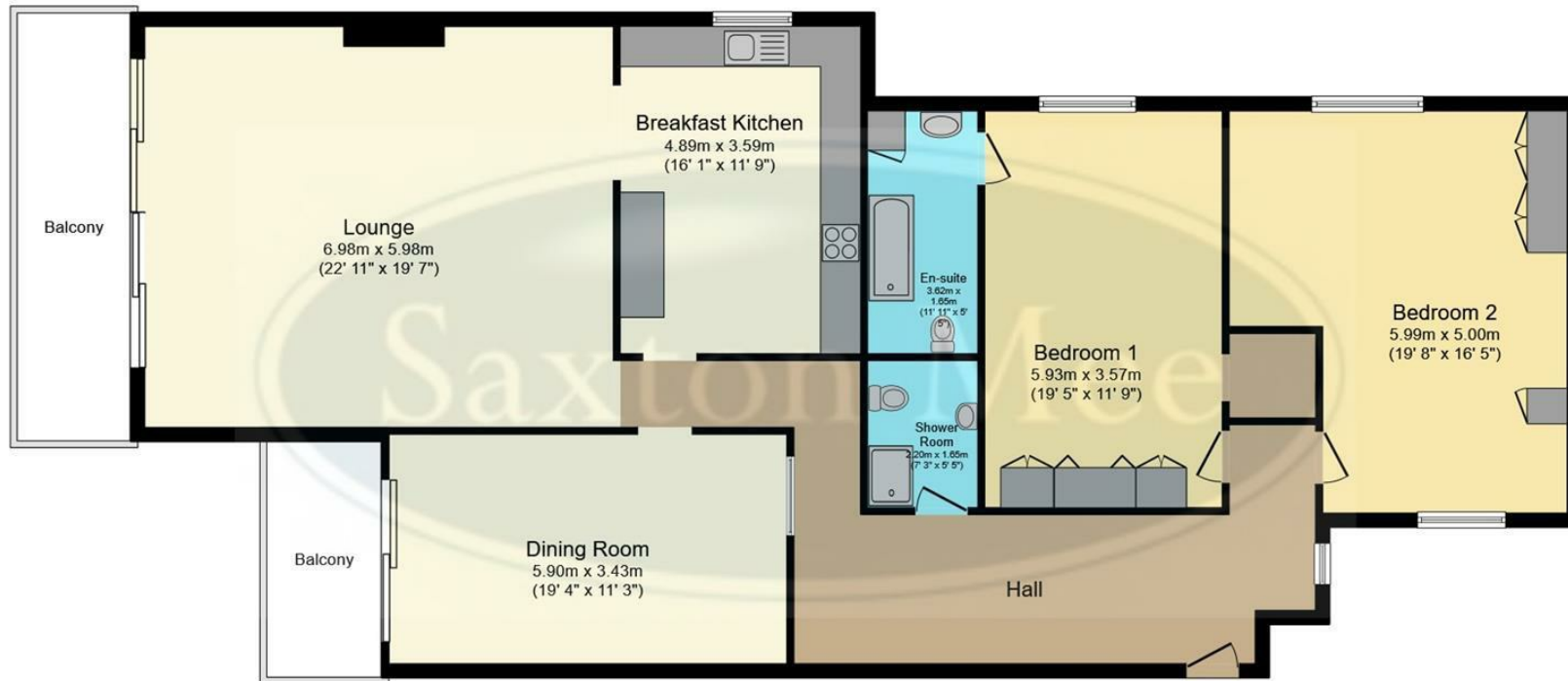
Occupying a prime first-floor position, the apartment is filled with natural light and designed for both comfortable living and entertaining. A particular highlight is the presence of two private balconies, accessed from the principal reception spaces, creating seamless indoor-outdoor living and offering multiple vantage points from which to enjoy the attractive open views — especially appealing as we move into the spring and summer months but also stunning in Autumn and Winter.

The apartment's highly flexible layout further enhances its appeal. Currently arranged as a generous two-bedroom home, it also offers the option to create a third bedroom if desired, allowing buyers to tailor the space to their needs — whether that be spacious two-bedroom living, additional guest accommodation or a dedicated home office. Opportunities of this size, flexibility and position within the development are rarely available and with competing stock at lower price points lacking this level of space and outlook, early viewing is strongly recommended.

- Nearly 2,000 sq.ft – one of the largest apartments at Whinfell Court
- Flexible layout – spacious 2 bedroom or easily reinstated 3 bedroom configuration
- Large private balcony with far-reaching open views
- Overlooking the beautiful Whinfell Quarry Gardens
- Exclusive development with residents' leisure complex and swimming pool
- Light-filled sitting and dining rooms both opening onto the balcony
- Stylish breakfast kitchen with integrated appliances
- Generous master suite with luxury en suite bathroom
- Beautifully maintained communal gardens, garage and visitor parking
- On the edge of the Peak District, close to Whirlow Park and stunning countryside







Floor Plan

Total floor area 184.5 m² (1,986 sq.ft.) approx

This plan is for illustration purposes only and may not be representative of the property. Plan not to scale. Powered by PropertyBox

While we endeavour to make our sales particulars fair, accurate and reliable, they are only a general guide to the property and, accordingly, if there is any point, which is of particular importance to you, please contact the relevant office. The Agents have not tested any apparatus, equipment, fittings or services and so cannot verify they are in working order. The buyer is advised to obtain verification. Please note all the measurement details are approximate and should not be relied upon as exact. All plans, floor plans and maps are for guidance purposes only and are not to scale. Under no circumstances should they be relied upon as exact or for use in planning carpets and other such fixtures, fittings or furnishings. YOUR HOME IS AT RISK IF YOU DO NOT KEEP UP REPAYMENTS ON A MORTGAGE OR OTHER LOAN SECURED ON IT. 'A Life Assurance policy may be requested.' 'Written Quotations of credit terms available on request.'

Banner Cross
T: 0114 268 3241
E: bannercross@saxtonmee.co.uk
www.saxtonmee.co.uk

Hathersage
T: 01433 650009
E: hathersage@saxtonmee.co.uk

Bakewell
T: 01629 815307
E: bakewell@saxtonmee.co.uk

Matlock
T: 01629 828250
E: matlock@saxtonmee.co.uk

Saxton Mee