



Key features

- Chain-free three-bedroom house
- Dining room and superb four-piece bathroom/W.C.
- Garage and space in front for parking
- Conservatory
- Attractive kitchen, three reception rooms
- 40' West-facing garden with artificial lawn
- Double-glazed windows and gas heating
- Four piece bathroom / w.c.

Property Information

Tenure

Freehold

Council Tax

D

EPC Rating

C

Local Authority

Broxbourne Borough Council



 paulwallace
estate agents

hoddesdon@paulwallace.co.uk

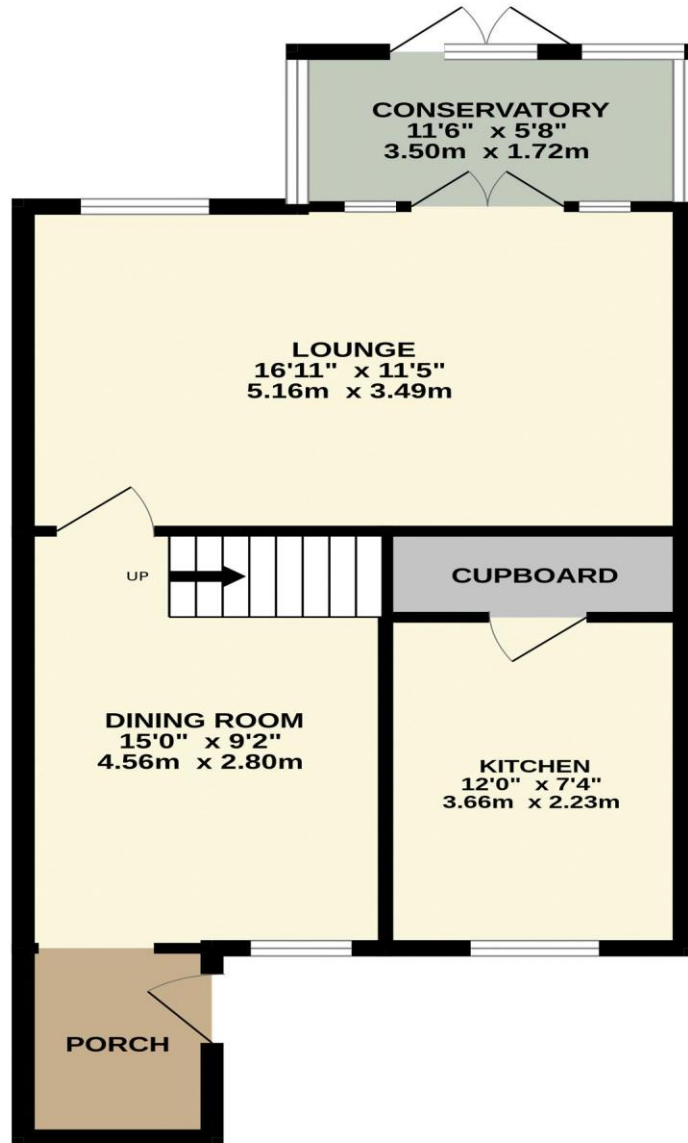
01992 466471



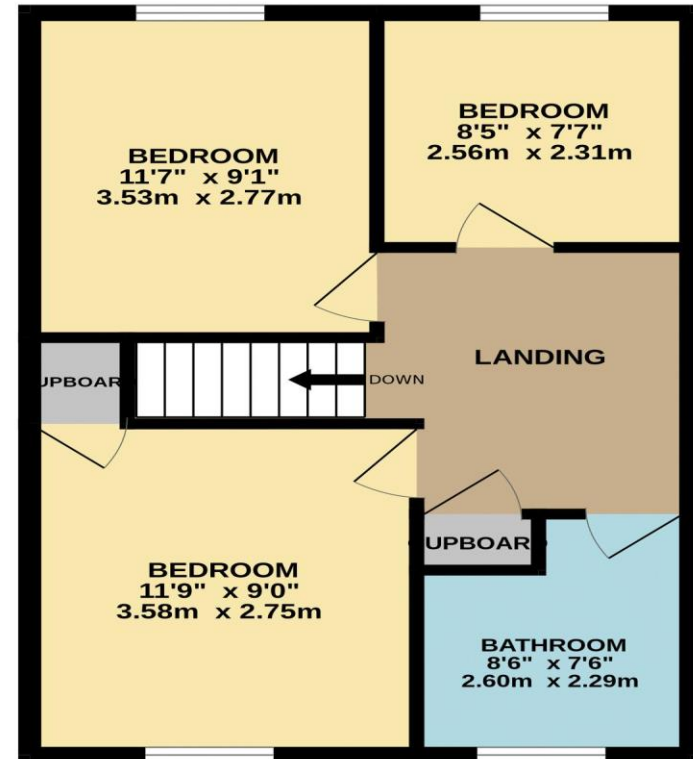
 paulwallace



GROUND FLOOR
545 sq.ft. (50.7 sq.m.) approx.



1ST FLOOR
456 sq.ft. (42.4 sq.m.) approx.



TOTAL FLOOR AREA : 1001 sq.ft. (93.0 sq.m.) approx.

Whilst every attempt has been made to ensure the accuracy of the floorplan contained here, measurements of doors, windows, rooms and any other items are approximate and no responsibility is taken for any error, omission or mis-statement. This plan is for illustrative purposes only and should be used as such by any prospective purchaser. The services, systems and appliances shown have not been tested and no guarantee as to their operability or efficiency can be given.
Made with Metropix ©2025






Paul Wallace Estate Agents

70 High Street
Hoddesdon
Hertfordshire
EN11 8ET

 01992 466471

 hoddesdon@paulwallace.co.uk

 www.paulwallace.co.uk



Opening Times

Mon	9am to 6.30pm
Tues	9am to 6.30pm
Wed	9am to 6.30pm
Thurs	9am to 6.30pm
Fri	9am to 6.30pm
Sat	9am to 5.00pm
Sun	Closed



Agents Note: Whilst every care has been taken to prepare these sales particulars, they are for guidance purposes only. All measurements are approximate and are for general guidance purposes only and whilst every care has been taken to ensure their accuracy, they should not be relied upon. Potential buyers are advised to recheck the measurements.