



Saltram Crescent, W9

Leasehold - £700,000

For sale, an expansive two-bedroom ground-floor apartment situated within a stunning church conversion on Saltram Crescent, a quiet residential street in Maida Vale. This impressive residence offers generous living space throughout, beautifully blending historic architectural character with a modern feel.

The property features a grand reception and dining room with high ceilings, neutral decor, and charming original features like exposed brickwork. This impressive space provides direct access to a private courtyard, perfect for outdoor relaxation. The layout flows into a sleek, modern U-shaped kitchen equipped with ample cabinetry and integrated appliances.

The accommodation boasts two exceptionally large double bedrooms. The principal bedroom is a highlight, offering a private, well-appointed en-suite shower room. The second bedroom is also generously sized and sits conveniently next to the main family bathroom, providing easy access for both residents and guests.

Ideally located in Simon Court, the property provides easy access to vibrant local cafes and boutiques. Excellent transport links are available nearby via Queen's Park (Bakerloo Line and Overground, Zone 2) and Maida Vale (Bakerloo Line, Zone 2), providing easy access across London



020 7328 2828

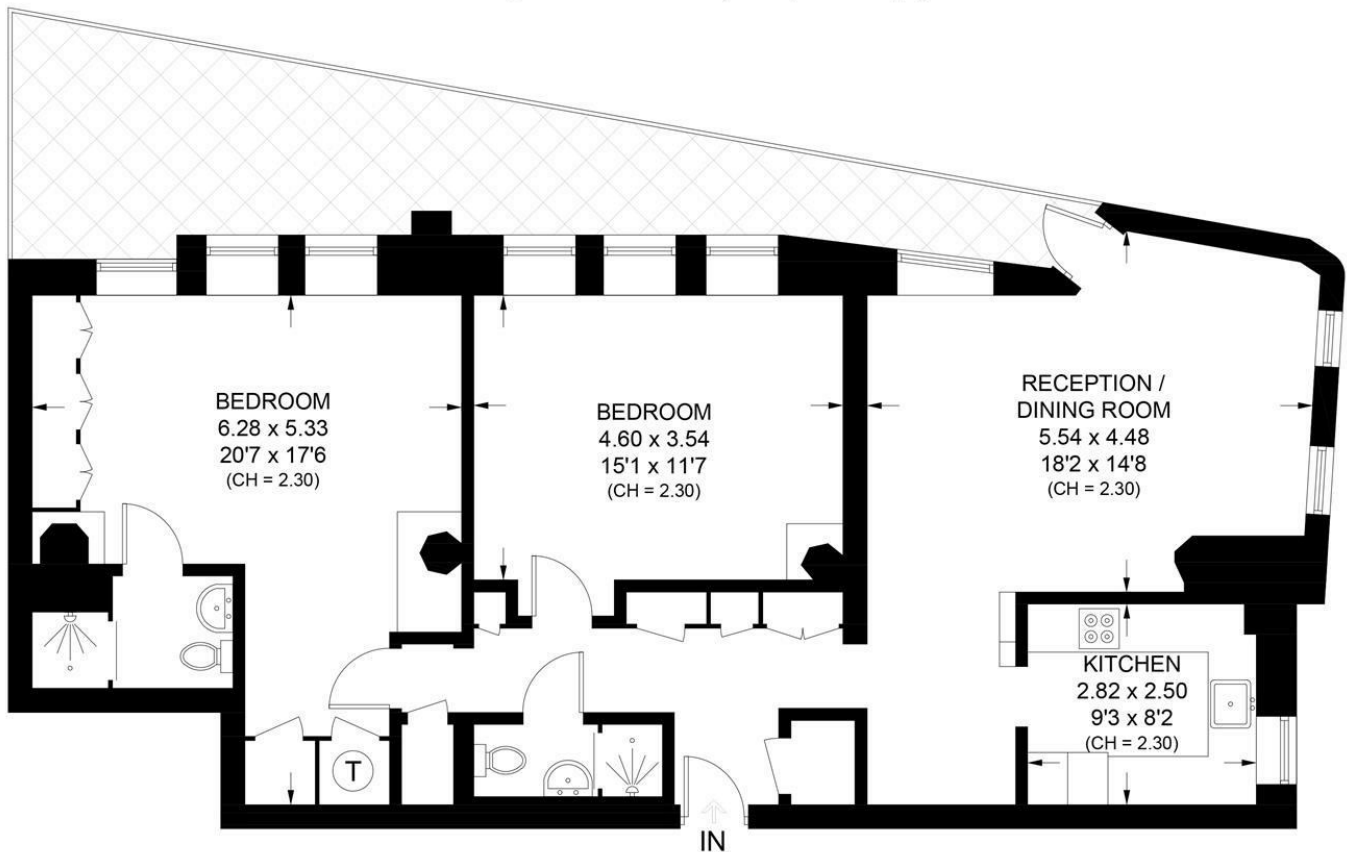
enquiries@cameronsstiff.co.uk

cameronsstiff.co.uk





Approximate Area = 100.1 sq m / 1077 sq ft
Including Limited Use Area (3.1 sq m / 33 sq ft)



GROUND FLOOR

SIMON COURT, SALTRAM CRESENT, W9

Surveyed and drawn in accordance with the International property measurements standards (IPMS 2: Residential) Not drawn to scale unless stated.
Whilst every care is taken in the preparation of this plan, please check all dimensions, shapes and compass bearings before making any decisions reliant upon them.

EPC: F

Ref: 19675322

