



Ashley King

Wilson Tower, Christian Street, London, E1 1AW

£399,950

🛏️ 2 🪑 2 🚗 1



The apartment comprises a spacious open-plan reception room with floor-to-ceiling windows, creating a bright and airy living space perfect for entertaining. The sleek, fully fitted modern kitchen features integrated appliances and ample storage.

Both bedrooms are well-proportioned doubles, with the principal bedroom benefitting from a stylish en-suite shower room. A further contemporary family bathroom completes the accommodation. A private balcony provides an excellent outdoor retreat with elevated views across the London skyline.

Location

Ideally positioned in vibrant East London, the property is within easy reach of Whitechapel, Shadwell and Aldgate, offering superb connectivity via Underground, Overground, DLR and the Elizabeth Line. The City, Canary Wharf and Shoreditch are all easily accessible, making this a prime location for professionals.

Local Authority: Tower Hamlets

EPC rating: C

Council Tax Band: D - £1,754.57

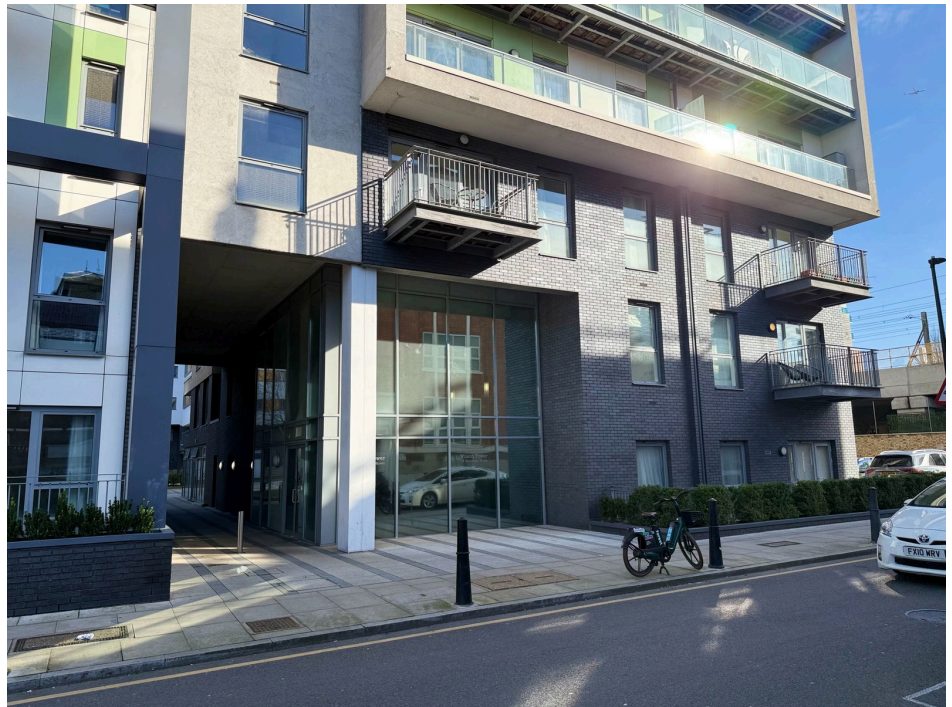
Service Charge: £4100.00 APPROX

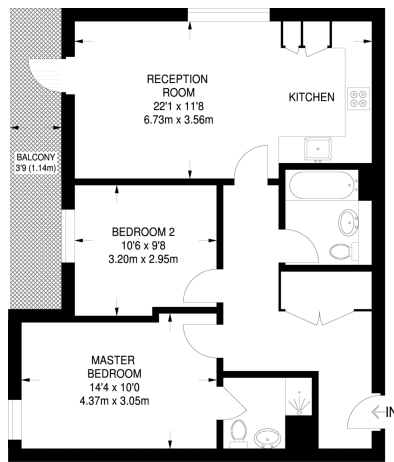
Ground Rent: £516.00 P/A

Leasehold: 240 years remaining

PLEASE NOTE: ALL APPLIANCES, HEATING, BOILER WILL BE UNTESTED AND THE PROPERTY WILL BE SOLD AS SEEN

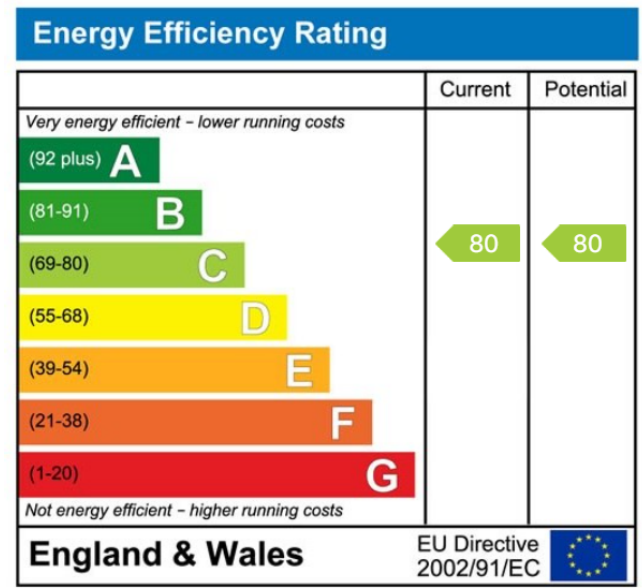
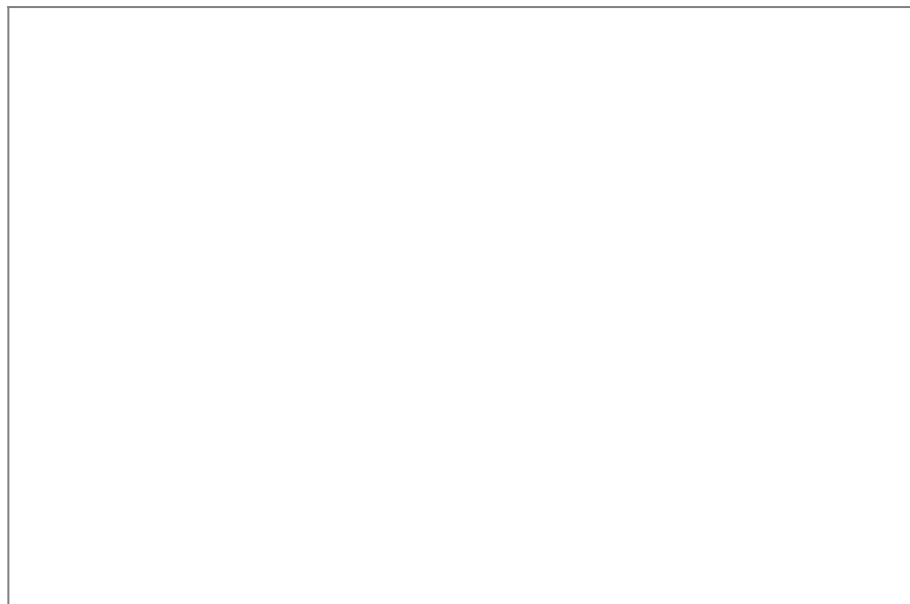
Disclaimer: Ashley King endeavour to advertise accurate representations of properties in descriptions, virtual tours and floor plans, however, they are intended as a guide only and interested parties must satisfy themselves by undertaking a personal inspection.





ELEVENTH FLOOR
736 SQ FT / 68.4 SQ M

- TWO BEDROOMS
- TWO BATHROOMS
- LIFT ACCESS
- 24 HR CONCIERGE
- RESIDENCE GYM
- EPC C
- CLOSE TO OVER GROUND SHADWEL & ALDGATE EAST UNDERGROUND



Ashley King Estate, Lettings & Asset Management
69 Cannon Workshops, London E14 4AS
T: 020 7052 4668 E: docklands@ashleykinguk.com

