



**BEAUCHAMP
ESTATES**

Duke Street

MAYFAIR





Two bedroom duplex apartment set within a Grade II listed building.



Exterior

A stunning, interior designed two bedroom duplex apartment set within a Grade II listed building in Mayfair.

Highlights

- Concierge and night-time security
- On-site building manager





Interiors

The property has been refurbished and interior designed to the highest specification with further benefits including on-site concierge and night time security, air conditioning, under floor heating, lift service, and an out-of-hours emergency service. The apartment comprises two large double bedrooms with ensuite bathrooms, a large open plan living & dining area leading onto a bespoke kitchen complete with integrated lighting and Gaggenau appliances along with natural oak wooden flooring.



Features

- 24/7 Concierge
- Air Conditioning
- Lift
- Underfloor Heating

Location

Mayfair allows easy access to the rest of London with many of the best shopping and dining areas within walking distance or a short drive away. Nearby underground stations include Bond Street, Marble Arch and Oxford Circus.



Terms

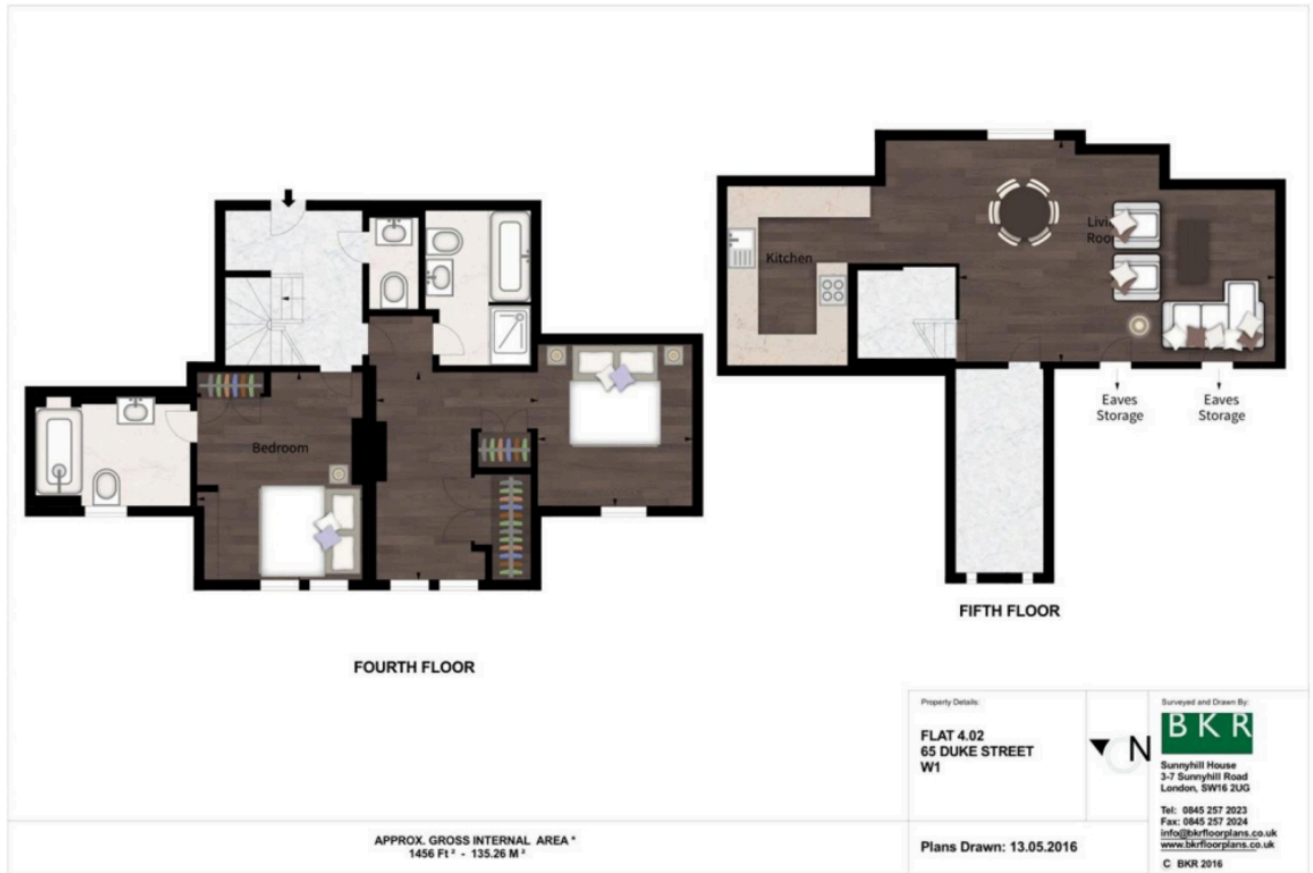
Price: £3,200 per week

Tenure:

Local Authority: Westminster

Council Tax: H

Energy Efficiency Rating		Environmental Impact (CO ₂) Rating	
Current	Potential	Current	Potential
Very energy efficient - lower running costs			
(92+) A		(10+) A	
(81-91) B		(11-15) B	
(69-80) C	78	(16-20) C	77
(55-68) D		(21-25) D	
(39-54) E		(26-30) E	
(21-38) F		(31-35) F	
(1-20) G		(36-40) G	
Not energy efficient - higher running costs			
England, Scotland & Wales		England, Scotland & Wales	



Beauchamp Estates, their clients and any joint agents give notice that: 1. They are not authorised to make or give any representation or warranties in relation to the property either here or elsewhere, either on their own behalf or on behalf of their client or otherwise. They assume no responsibility for any statement that may be made in these particulars. These particulars do not form part of any offer or contract and must not be relied upon as statements or representations of fact. 2. Any Areas, measurements or distances are approximate. The text photographs and plans are for guidance only and are not necessarily comprehensive. It should not be assumed that the property has all necessary planning, building regulation or other consents and Beauchamp Estates have not tested any services, equipment or facilities. Purchasers must satisfy themselves by inspection or otherwise.



**BEAUCHAMP
ESTATES**

Beauchamp Estates - Mayfair

24 Curzon Street,
London, W1J 7TF

020 7499 7722

londoninformation@beauchampestates.com

www.beauchampestates.com