



TENHAM AVENUE, SW2

£700,000

- First floor flat
- Victorian maisonette
- Private garden
- Share of the Freehold
- Telford Park
- Energy rating: G





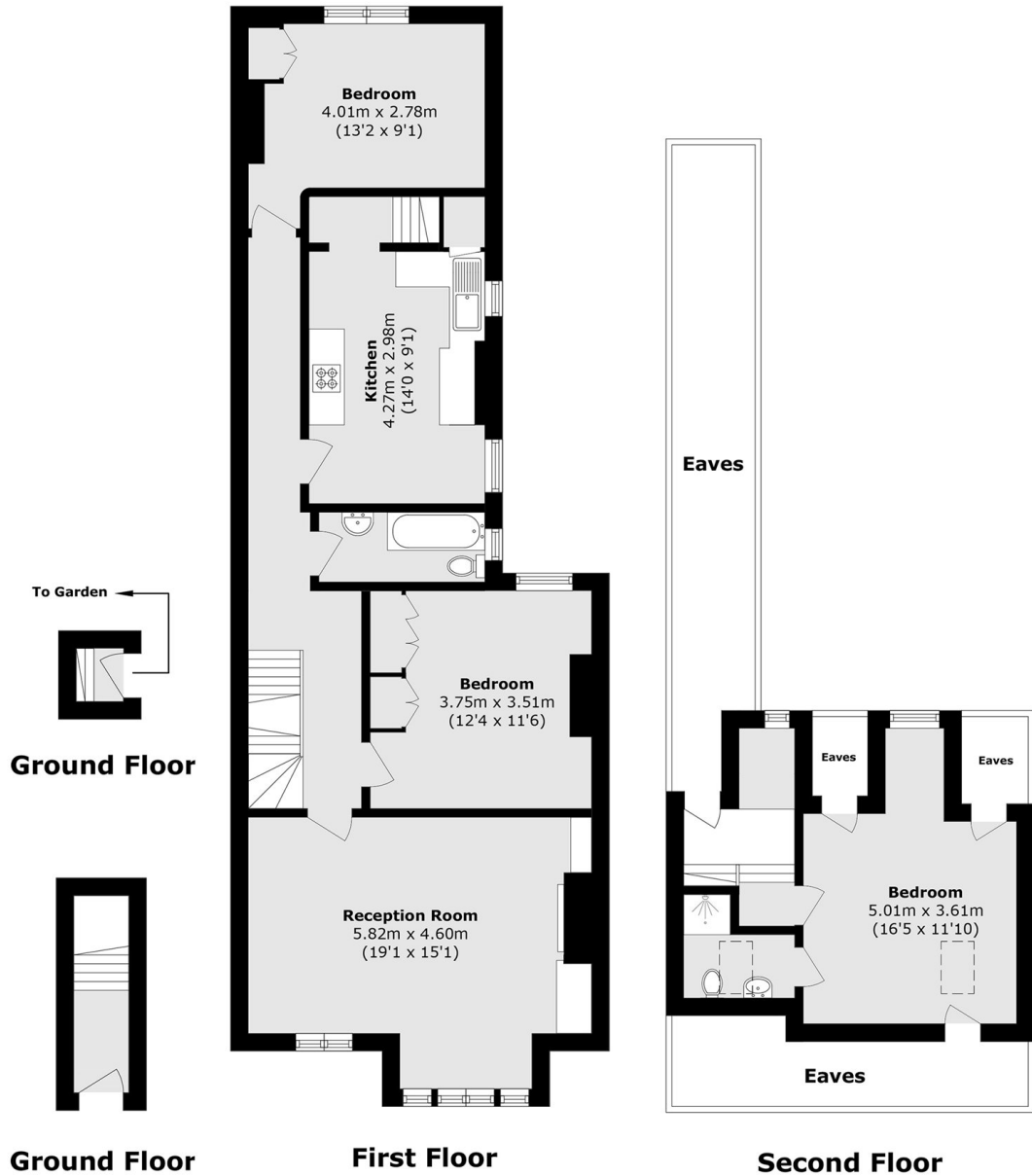
ABOUT THE HOME

A beautiful split level first floor Victorian maisonette, located moments away from Tooting Bec Common. This property offers a generous reception room to the front, with high ceilings and lovely period features. There are three double bedrooms, two bathrooms, and a modern kitchen, with steps down to a private garden. It also benefits from being share of the freehold.

Tenham Avenue is a popular residential road in Balham's Telford Park Estate. Balham mainline and underground station is within easy reach as are the vast array of shops, bars and restaurants local to the area. The green open spaces of Tooting Bec Common are also close by.







Total area (approx.): 109.3 sq. m (1176.5 sq. ft)
(Excluding Eaves)

JACKSONS BALHAM

8-11 Balham Station Road,
London, SW12 9SG
Sales: 020 8675 6555
Lettings: 020 8675 6565

Energy Rating: We aim to make our particulars both accurate and reliable. However they are not guaranteed; nor do they form part of an offer or contract. If you require clarification on any points then please contact us, especially if you're traveling some distance to view. Please note that appliances and heating systems have not been tested and therefore no warranties can be given as to their good working order.