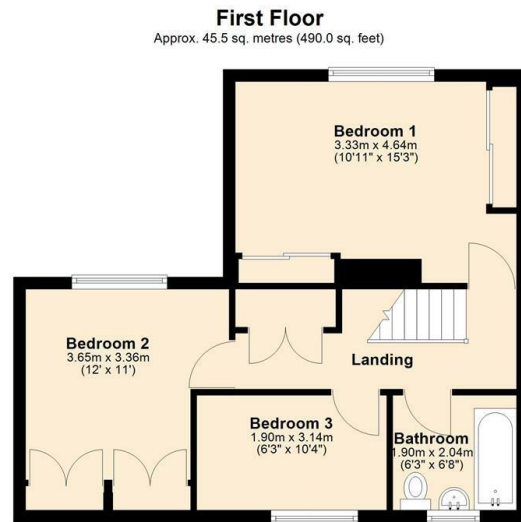




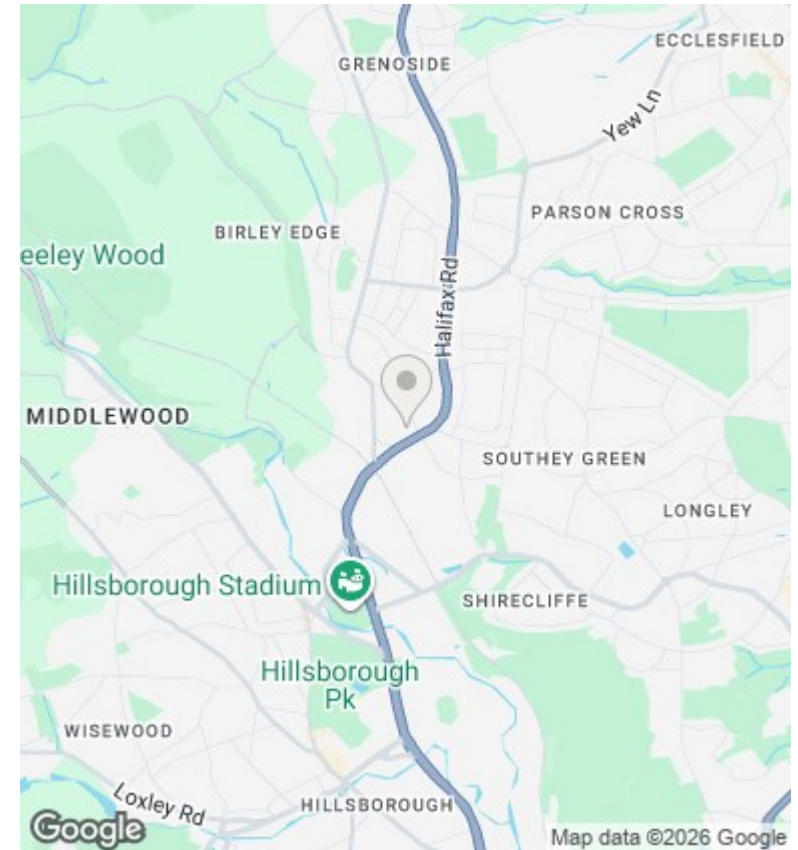
## 27 Heath Road, Sheffield, S6 1JR

Offers In The Region Of £229,950

- Semi Detached Family Home
- Three Bedrooms
- Gas Central Heating
- Popular Residential Area
- NO CHAIN
- Close To A Wide Range Of Amenities
- Gardens To Front And Rear
- Well Presented Accommodation
- uPVC Double Glazing
- Off Road Parking



Total area: approx. 91.4 sq. metres (983.8 sq. feet)



## Directions

## Viewings

Viewings by arrangement only. Call 0114 283 4050 to make an appointment.

## Council Tax Band

## EPC Rating:

Energy Efficiency Rating		
	Current	Potential
<i>Very energy efficient - lower running costs</i>		
(92 plus) <b>A</b>		
(81-91) <b>B</b>		
(69-80) <b>C</b>		
(55-68) <b>D</b>		
(39-54) <b>E</b>		
(21-38) <b>F</b>		
(1-20) <b>G</b>		
<i>Not energy efficient - higher running costs</i>		
<b>England &amp; Wales</b>	EU Directive 2002/91/EC	