



Olde Farm Drive | Blackwater | Camberley | GU17 0DU

Asking Price £514,500

Freehold

Waterfords W
Residential Sales & Lettings

Olde Farm Drive | Blackwater
Camberley | GU17 0DU
Asking Price £514,500

A well-proportioned three-bedroom, two-bathroom home set on a generous corner plot of approximately 0.2 acres, featuring a garage with an adjoining workshop and ample driveway parking.

- Three double bedrooms
- Utility room with separate cloakroom
- Garage with adjoining workshop
- Fitted kitchen
- Two large reception rooms
- Large corner plot garden approx. 0.2 of an acre
- Two shower rooms
- Driveway with off street parking

Location

Situated in a sought after location close to highly regarded schools, local shops and other local amenities are all nearby along with bus service routes as well as Blackwater railway station and easy access to M3/M4 road links.

Description

A spacious and versatile three-bedroom semi-detached home, positioned at the end of a quiet





cul-de-sac and occupying a generous 0.2-acre corner plot. The accommodation includes a bright entrance hall leading to a large utility room with cloakroom. The 14'7" dual-aspect lounge overlooks the substantial corner-plot garden, offering excellent potential for extension (subject to planning permission). A separate 13' dining room enjoys views to the front and is complemented by a well-proportioned kitchen/breakfast room. A fitted shower room completes the ground floor.

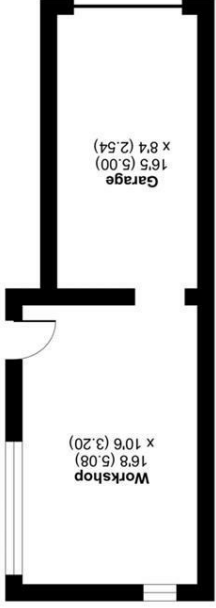
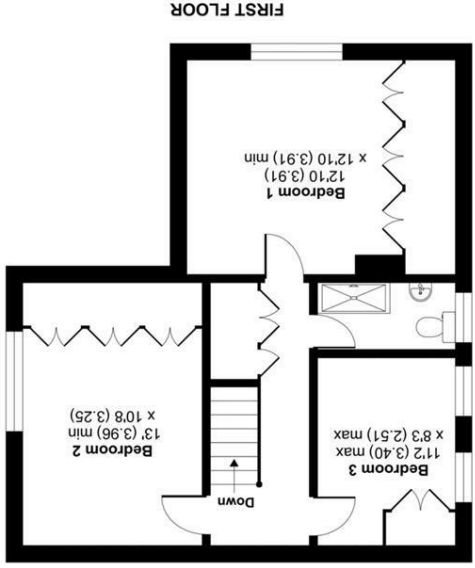
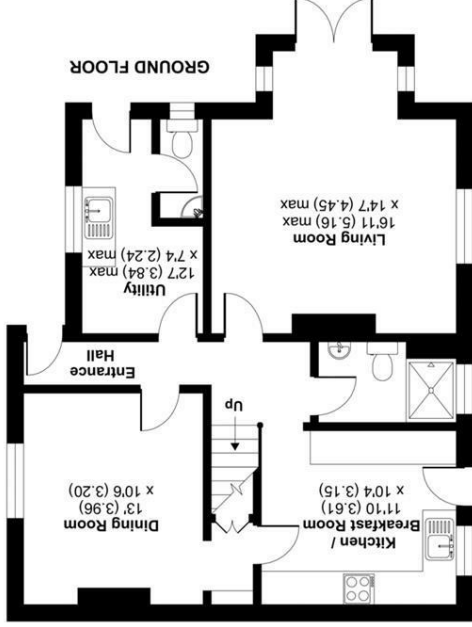
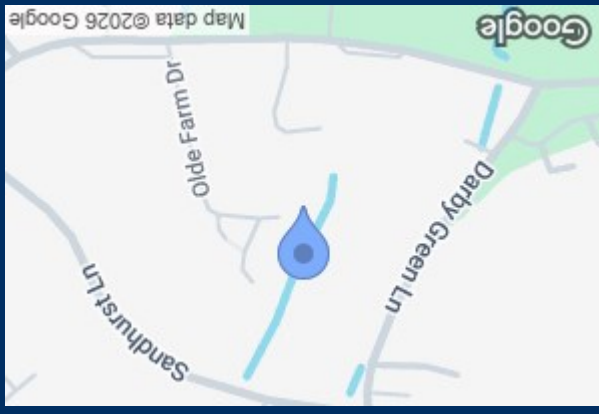


Upstairs, the property offers three generous bedrooms, all featuring built-in wardrobes, along with extensive eaves storage. A modern fitted shower room serves the first floor.



Externally, the home boasts an impressive corner-plot garden, mainly laid to lawn with a patio area, all enclosed by mature trees and fencing. To the front, there is driveway parking for multiple vehicles, leading to garage with adjoining workshop.





Olde Farm Drive, Blackwater, Camberley, GU17
 Approximate Area = 1369 sq ft / 127.1 sq m
 Garage = 140 sq ft / 13 sq m
 Workshop = 177 sq ft / 16.4 sq m
 Total = 1686 sq ft / 156.6 sq m

For identification only - Not to scale

Floor plan produced in accordance with RICS Property Measurement 2nd Edition, incorporating International Property Measurement Standards (IPMS2 Residential). © nchocom 2025.
 Produced for Waterfords. REF: 1385888



Energy Efficiency Rating	
Very energy efficient - lower running costs	A (91-100)
Energy efficient	B (81-90)
Decent energy efficiency	C (69-80)
Some energy efficiency	D (55-68)
Low energy efficiency	E (39-54)
Poor energy efficiency - higher running costs	F (21-38)
Very poor energy efficiency - highest running costs	G (1-20)
Current	84
Potential	69

EU Directive 2002/91/EC
 England & Wales

35 Plough Road
 Yateley
 Hampshire
 GU46 7UW
 01252 870222
 yateley@waterfords.co.uk