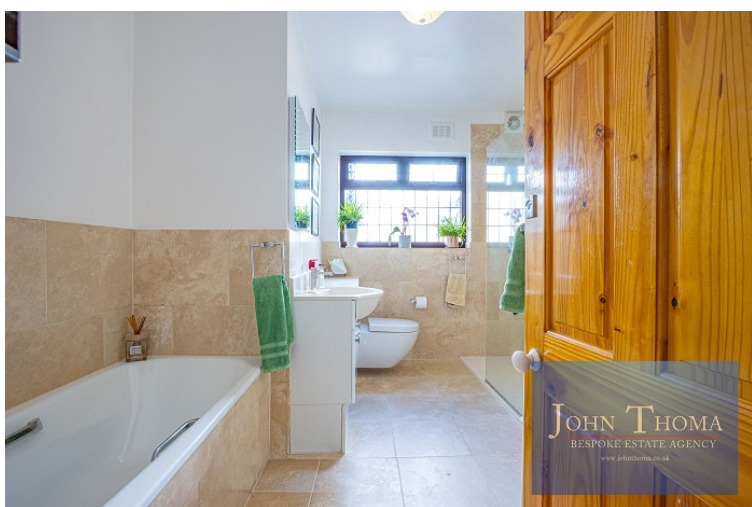
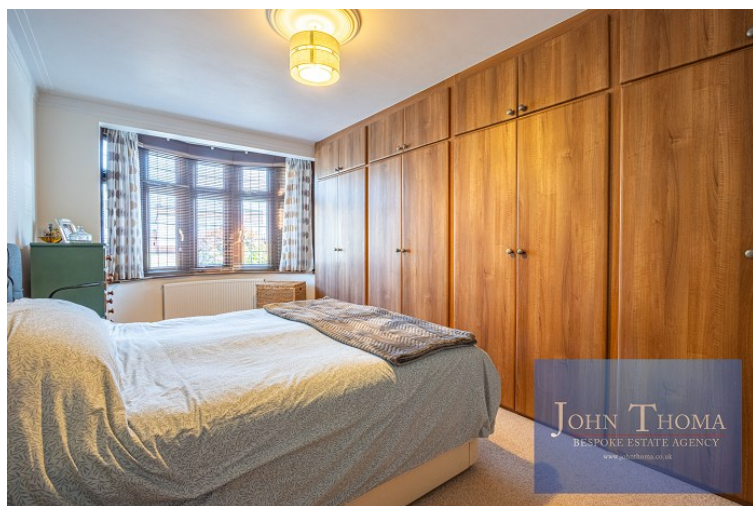




Falmouth Gardens is conveniently located close to a selection of highly regarded local schools, with a wide range of shops, amenities, and everyday conveniences nearby.

This attractive property is arranged over two floors and extends to approximately 1,666 sq ft of well-designed living accommodation.

Falmouth Gardens, Redbridge



- ◆ Impressive 4 bedroom semi-detached family residence
- ◆ Approximately 1,666 sq ft of beautifully appointed accommodation
- ◆ Elegant open plan lounge and dining entertaining space
- ◆ Bespoke fitted kitchen with granite work surfaces
- ◆ Stylish family bathroom with luxury walk-in shower

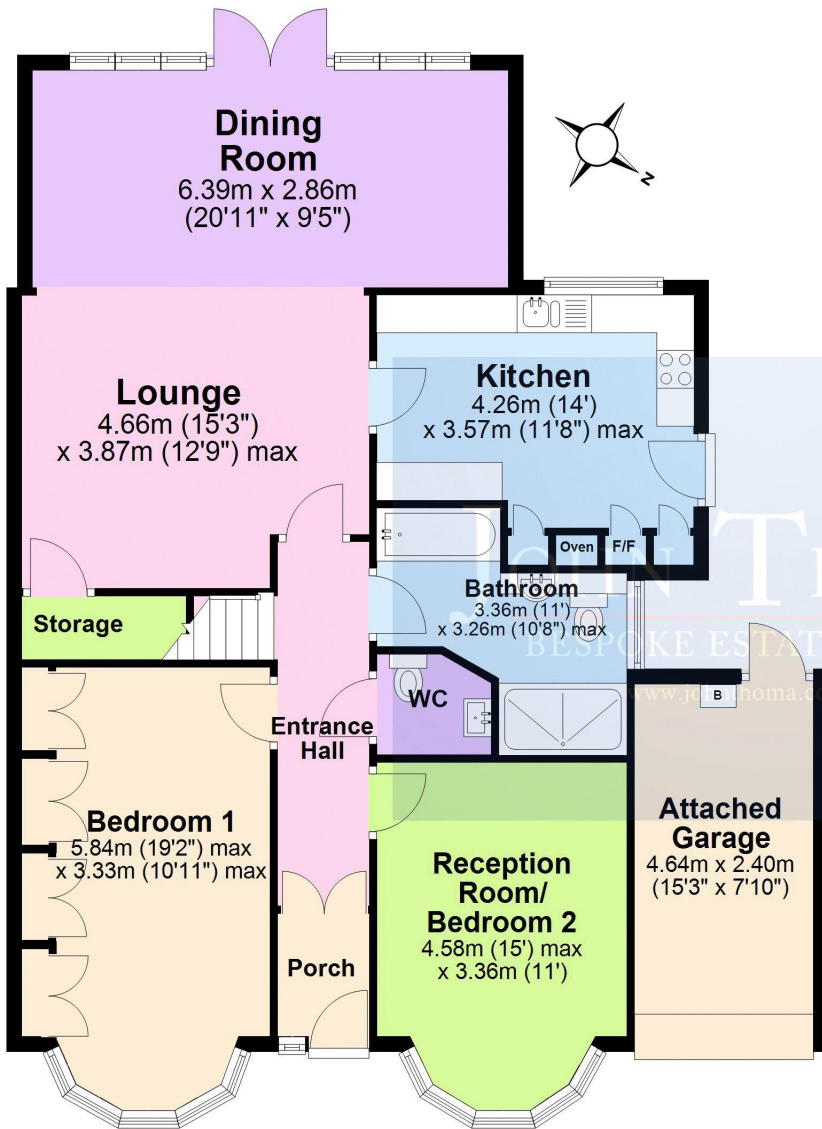
- ◆ Versatile bedroom layout with exceptional space throughout
- ◆ Beautifully landscaped south-west facing rear garden
- ◆ Attached garage with convenient front & rear access
- ◆ Private off-street parking to the front
- ◆ Prestigious location close to Redbrige (central line) tube station



Agent Note: The information provided about this property does not constitute or form part of an offer or contract, nor may it be regarded as representations. All interested parties must verify accuracy and your solicitor must verify tenure/lease information, fixtures & fittings and, where the property has been extended/converted, planning/building regulation consents. All dimensions are approximate and quoted for guidance only as are floor plans which are not to scale and their accuracy cannot be confirmed. Reference to appliances and/or services does not imply that they are necessarily in working order or fit for the purpose.

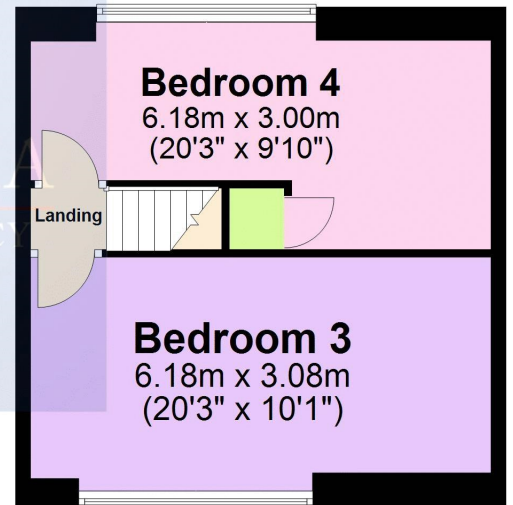
Ground Floor

Approx. 116.7 sq. metres (1256.7 sq. feet)



First Floor

Approx. 38.1 sq. metres (410.1 sq. feet)



Total area: approx. 154.9 sq. metres (1666.8 sq. feet)

Council Tax Band: E (Redbridge)

[John Thoma Bespoke Estate Agency, Chigwell Branch](#)

The Coach House 201 High Road Chigwell Essex IG7 5BJ

020 8340 8833 Local call rate