



Heathfield South, TW2

£2,200 Per calendar month

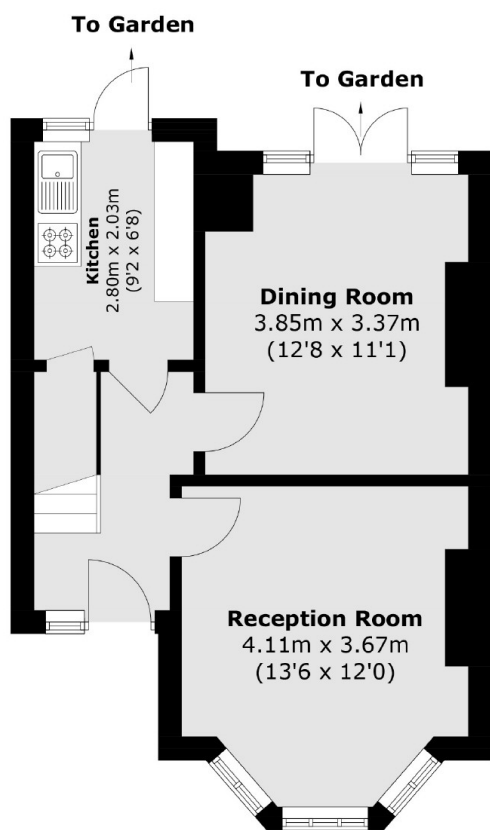
Available to move into immediately is this cosy three bedroom family home on the popular road of Heathfield South. Located just moments from Twickenham railway station, shops and restaurants. The property benefits from two reception rooms, separate kitchen and a large well maintained South facing garden.

Located just a short walk to Twickenham mainline station with its fast train service into London Waterloo. Twickenham high street is also within easy reach with its wide array of bars, restaurants and shops.

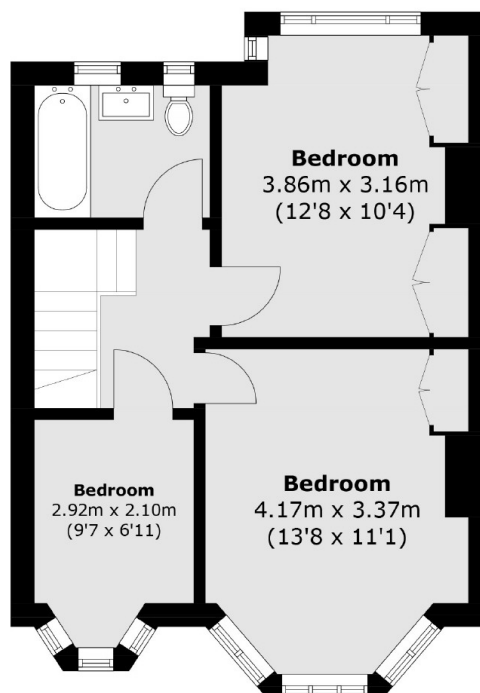
Features

- Three Bedrooms
- Light Interior Throughout
- Large Garden
- Available immediately
- Popular Location
- Close To Station

Heathfield South, Twickenham, TW2



Ground Floor



First Floor

Total area (approx.): 81.0 sq. m (871.8 sq. ft)