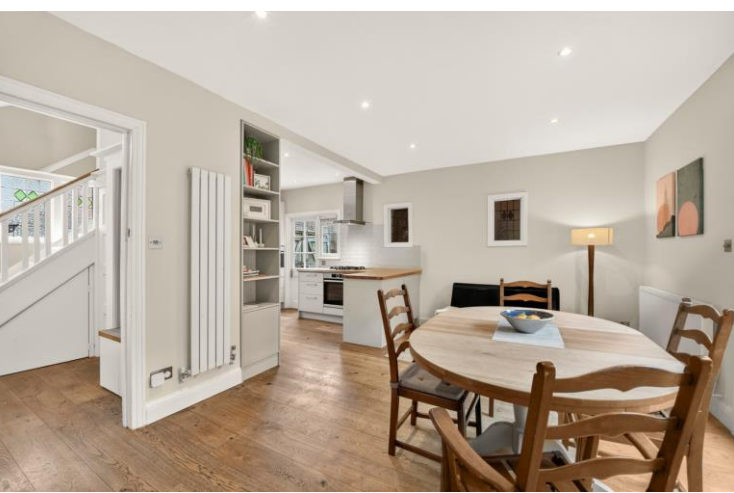




Holmesdale Avenue  
London, SW14

CHESTERTONS





A beautifully renovated and recently redecorated semi-detached Arts & Crafts home, rich in period features and ideally situated on a peaceful cul-de-sac in the heart of East Sheen.

The property offers a west-facing garden, accessible from both the elegant reception room and the spacious eat-in kitchen—perfect for entertaining and family living. An attached garage provides excellent storage for bikes and sports equipment, with further potential to extend or convert (subject to the usual consents).

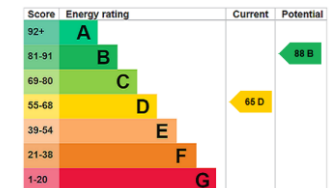
Presented in excellent condition throughout, the home benefits from double glazing and extensive built-in storage, including bespoke wardrobes and stylish alcove units.

Holmesdale Avenue is known for its strong sense of community and low traffic, making it particularly appealing for families. On-street parking is convenient, and the quiet setting offers a safe environment for children.

Ideally located, the highly regarded Sheen Mount Primary School is just a five-minute walk away, along with the vibrant centre of East Sheen, offering a wide selection of restaurants, supermarkets, and local pubs.

- Semi Detached
- Four Bedrooms
- West Facing Garden
- Great Condition
- Quiet Cul de Sac Location

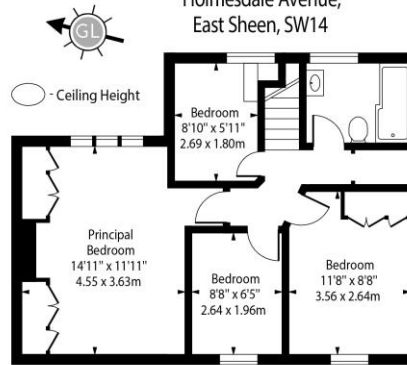
Asking Price £1,250,000



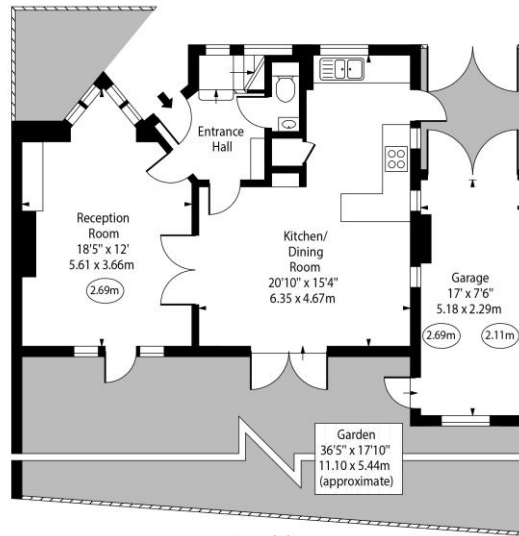
**Tenure:** Freehold  
**Service Charge:** £0  
**Ground Rent:** £0  
**Local Authority:** London Borough of Richmond upon Thames  
**Council Tax Band:** F

**Chestertons East Sheen Sales**  
 254A Upper Richmond Road West  
 East Sheen  
 London  
 SW14 8AG  
 sheen@chestertons.co.uk  
 020 8104 0580

Holmesdale Avenue,  
East Sheen, SW14



First Floor



Ground Floor

Approx Gross Internal Area 1188 Sq Ft - 110.37 Sq M  
(Including Garage)

Every attempt has been made to ensure the accuracy of the floor plan shown.  
However, all measurements, fixtures, fittings, and data shown are approximate interpretations and  
for illustrative purposes only. Measured according to the RICS. Not To Scale.  
[www.goldlens.co.uk](http://www.goldlens.co.uk)  
Ref. No. 031130E

Chesterton UK Services Limited trading as Chestertons for themselves and for the vendor of this property whose agents they are, give notice that (i) these particulars do not constitute any part of an offer or contract, (ii) all statements contained within these particulars are made without responsibility on the part of Chestertons or the vendor, (iii) whilst made in good faith, none of the statements contained within these particulars are to be relied upon as a statement or representation of fact, (iv) any intending purchasers must satisfy themselves by inspection or otherwise as to the correctness of each of the statements contained within these particulars, (v) the vendor does not make or give either Chestertons or any person in their employment any authority to make or give representation or warranty whatsoever in relation to this property. Wide angle lenses may be used. ©Copyright Chestertons | Chesterton UK Services Limited | Registered Office 40 Connaught Street, Hyde Park, London W2 2AB Registered Company Number 05334580.



This paper is  
100% recyclable