



177 Harborne Lane Birmingham, B29 6SS

Available for the 2026–2027 Academic Year
£86.2 per person, per week

Well-presented 4-bedroom student house with four double bedrooms. The property offers a lounge/diner, a fully fitted kitchen with fridge/freezer, gas cooker, microwave, and washing machine, plus a bathroom with shower over the bath and an additional upstairs WC. Finished with wooden flooring throughout. Off-road parking for one car.

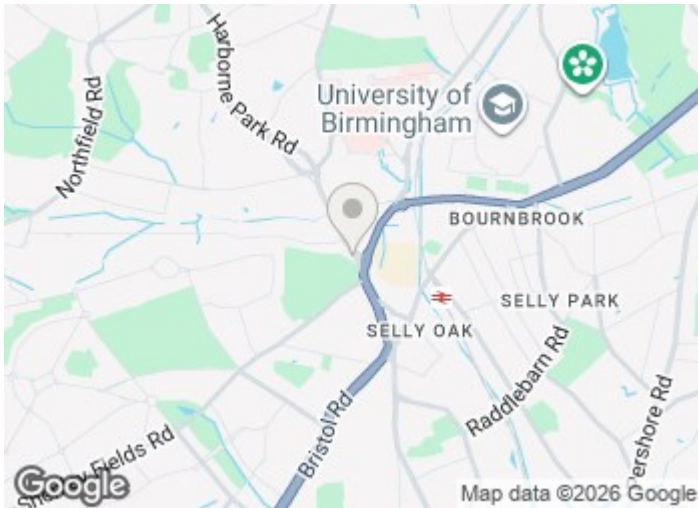
Great location for students.

EPC Rating: D
Council Tax Band: B (students exempt)

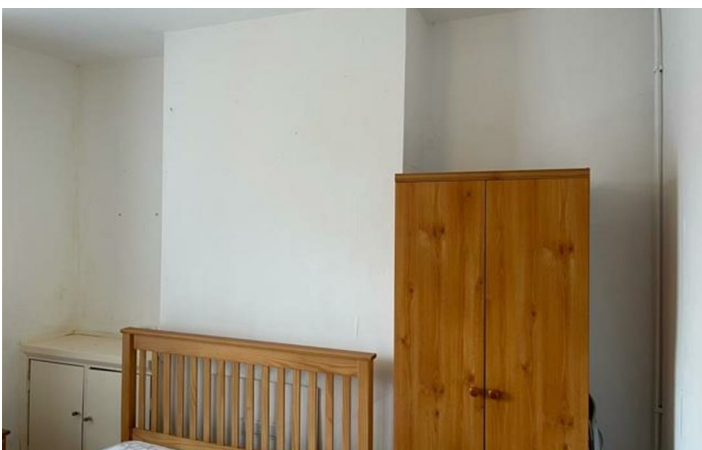
£1,494 Per Month

177 Harborne Lane

Birmingham, B29 6SS

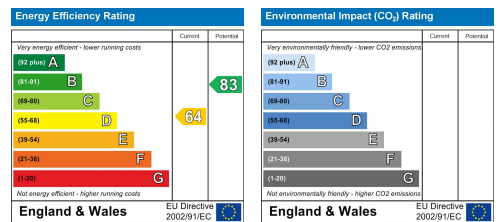


[Directions](#)



Floor Plan

These particulars, whilst believed to be accurate are set out as a general outline only for guidance and do not constitute any part of an offer or contract. Intending purchasers should not rely on them as statements of representation of fact, but must satisfy themselves by inspection or otherwise as to their accuracy. No person in this firm's employment has the authority to make or give any representation or warranty in respect of the property.



543 Bristol Road, Selly Oak, Birmingham B29 6AU. T: 0121 472 3331 Website: www.direct-housing.co.uk
 E-mail: sellyoak@direct-housing.co.uk lettings@direct-housing.co.uk accounts@direct-housing.co.uk

