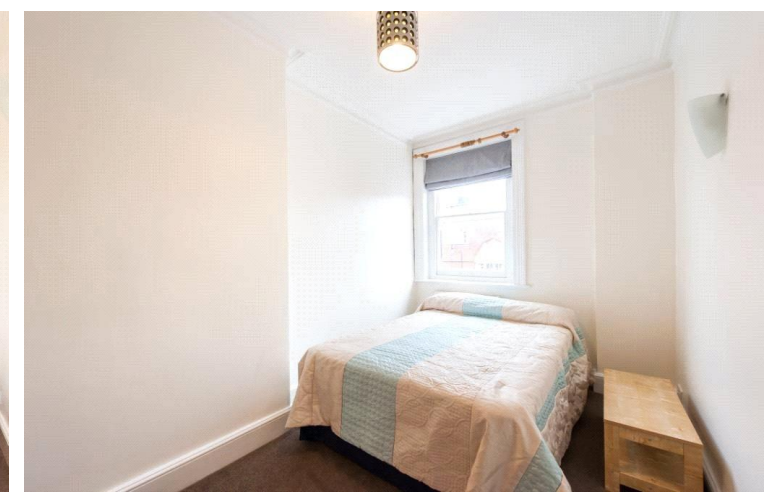
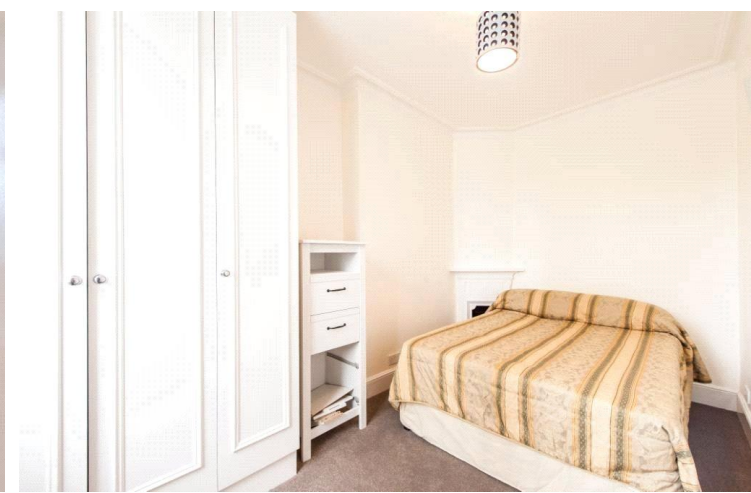




York Mansions
Marylebone, W1U

CHESTERTONS





This bright and well-presented two bedroom apartment is situated on the third floor of a desirable mansion block on the prestigious Chiltern Street, offering comfortable living in one of Marylebone's most sought-after locations.

The flat is modern and well-maintained throughout, featuring two good sized bedrooms, a contemporary bathroom, and a separate fully fitted kitchen. The property benefits from an abundance of natural light, creating a welcoming and airy feel, and is ideally suited for both professionals and small families.

York Mansions is perfectly positioned on Chiltern Street, one of Marylebone's most well-known and fashionable addresses, just moments from the boutique shops, cafés, and restaurants of Marylebone High Street. Baker Street station is also within easy reach, providing excellent transport links across London, making this an exceptional location for both convenience and lifestyle.

- Two Double Bedrooms
- One Bathroom
- Reception Room
- Kitchen
- Approximately 517 Sq Ft
- Energy Rating: C

£3,141.67 pcm

Additional tenant charges apply (fees apply to non-AST tenancies only)

Tenancy Agreement Fee: £300

References per Tenant/Guarantor: £60

Inventory check (approx. £100 – £250 inc. VAT)

chestertons.co.uk/property-to-rent/applicable-fees

Energy Efficiency Rating		Current	Potential
90-100	A		
81-89	B		
72-80	C	71	78
63-71	D		
55-62	E		
47-54	F		
39-46	G		

Not energy efficient - higher running costs

EU Directive 2002/91/EC
England, Scotland & Wales

Minimum Term: 12 months
Deposit Required: Five weeks
Local Authority: City Of Westminster
Council Tax Band: D
EPC Rating: C
Furnished

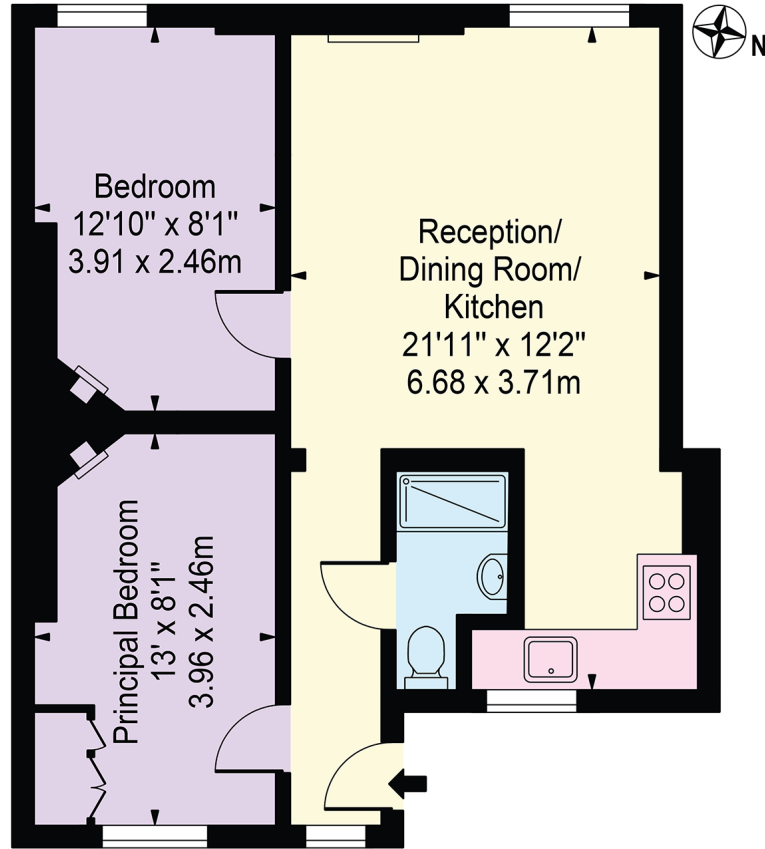
Chestertons Marylebone Lettings

20a Paddington Street
 London
 W1U 5QP

chestertons.co.uk

York Mansions

Approx. Gross Internal Area 517 Sq Ft - 48.03 Sq M



Third Floor

For Illustration Purposes Only - Not To Scale

This floor plan should be used as a general outline for guidance only and does not constitute in whole or in part an offer or contract. Any intending purchaser or lessee should satisfy themselves by inspection, searches, enquiries and full survey as to the correctness of each statement. Any areas, measurements or distances quoted are approximate and should not be used to value a property or be the basis of any sale or let. Copyright Morriarti Photography & Design LTD

Chesterton UK Services Limited trading as Chestertons for themselves and for the vendor of this property whose agents they are, give notice that (i) these particulars do not constitute any part of an offer or contract, (ii) all statements contained within these particulars are made without responsibility on the part of Chestertons or the vendor, (iii) whilst made in good faith, none of the statements contained within these particulars are to be relied upon as a statement or representation of fact, (iv) any intending purchasers must satisfy themselves by inspection or otherwise as to the correctness of each of the statements contained within these particulars, (v) the vendor does not make or give either Chestertons or any person in their employment any authority to make or give representation or warranty whatsoever in relation to this property. Wide angle lenses may be used. ©Copyright Chestertons | Chesterton Global Ltd | Registered Office 40 Connaught Street, Hyde Park, London W2 2AB Registered Company Number 05334580.



This paper is 100% recyclable