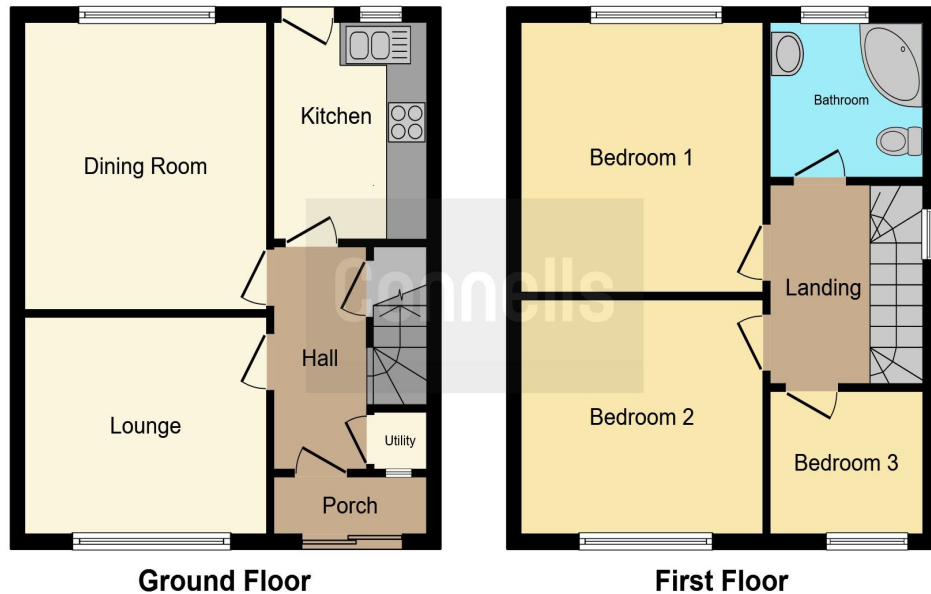




**Connells**

Fowler Street  
Blakenall Wolverhampton



This floor plan is for illustrative purposes only. It is not drawn to scale. Any measurements, floor areas (including any total floor area), openings and orientation are approximate. No details are guaranteed, they cannot be relied upon for any purpose and they do not form part of any agreement. No liability is taken for any error, omission or misstatement. A party must rely upon its own inspection(s). Powered by [www.focalagent.com](http://www.focalagent.com)

### Property Description

Connells Wolverhampton area pleased to bring to the market this traditional three bedroom semi-detached home with no onward chain. Well located to local amenities and transport links, this property promises to be the perfect choice for first time buyers.

Internally the property comprises of entrance porch, entrance hall, lounge, dining room, fitted kitchen. On the first floor there are three bedrooms and a family bathroom, loft space that is carpeted, decorated and has lighting. Externally there is off road parking to rear via gated access and garden space.

Viewing is highly recommended to appreciate the accommodation on offer.

### Location And Area

Being conveniently located for Wolverhampton City centre which offers an extensive range of amenities, shopping and leisure facilities and a good selection of highly regarded schools and universities.

### Porch

Double glazed sliding doors to front leading to entrance hall.

### Entrance Hallway

Single glazed door to front, stairs to first floor landing, radiator, two separate storage cupboards, one of which has plumbing for appliances.

### Lounge

11' 9" x 9' 11" plus bay ( 3.58m x 3.02m plus bay )  
Double glazed bay window to front, radiator.

## **Dining Room**

12' 11" x 11' 10" ( 3.94m x 3.61m )  
Double glazed window to rear, radiator.

## **Kitchen**

9' 11" x 7' 5" ( 3.02m x 2.26m )  
Double glazed window to rear, range of wall and base units with worksurfaces above, stainless steel sink drainer, gas oven, gas hob, integrated dishwasher, radiator, double glazed door to rear.

## **First Floor Landing**

Double glazed window to side, loft access, doors to various rooms.

## **Bedroom One**

12' 11" x 11' 9" ( 3.94m x 3.58m )  
Double glazed window to rear, radiator.

## **Bedroom Two**

11' 9" x 9' 10" ( 3.58m x 3.00m )  
Double glazed window to front, radiator.

## **Bedroom Three**

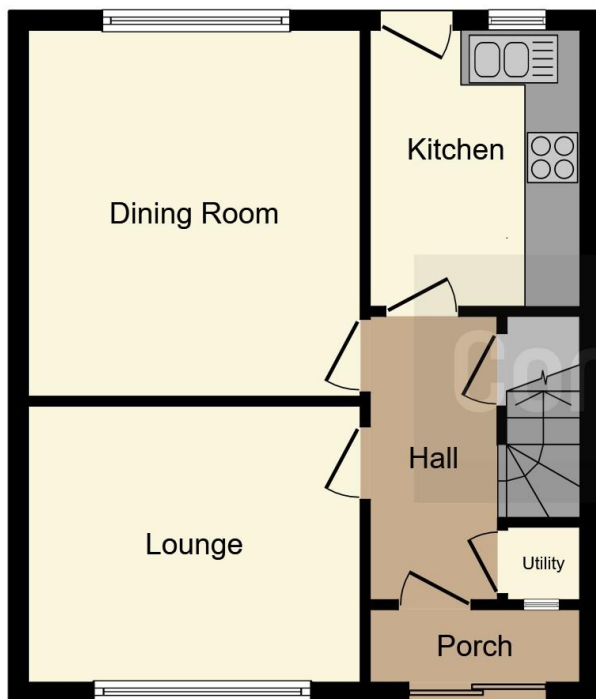
8' 3" x 7' 4" ( 2.51m x 2.24m )  
Double glazed window to front, radiator.

## **Bathroom**

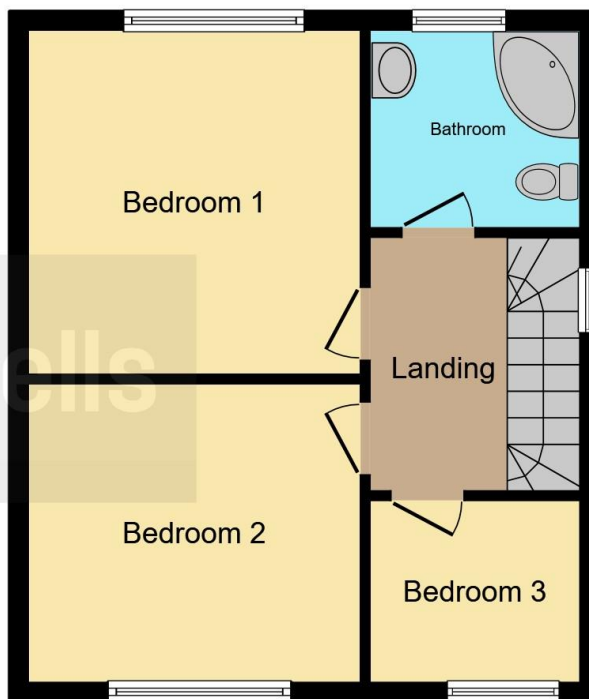
Double glazed window to rear, wc, wash hand basin, corner bath with shower head, extractor fan, radiator, tiled walls and flooring.

## **Outside**

Patio/ off road parking via a shared gated driveway, lawn, storage shed and outdoor tap.



**Ground Floor**



**First Floor**

This floor plan is for illustrative purposes only. It is not drawn to scale. Any measurements, floor areas (including any total floor area), openings and orientation are approximate. No details are guaranteed, they cannot be relied upon for any purpose and they do not form part of any agreement. No liability is taken for any error, omission or misstatement. A party must rely upon its own inspection(s). Powered by [www.focalagent.com](http://www.focalagent.com)

To view this property please contact Connells on

**T 01902 710 170**  
**E [wolverhampton@connells.co.uk](mailto:wolverhampton@connells.co.uk)**

81-83 Darlington Street  
 WOLVERHAMPTON WV1 4EX

EPC Rating: D    Council Tax  
 Band: B

Tenure: Freehold

**view this property online [connells.co.uk/Property/WVH333271](http://connells.co.uk/Property/WVH333271)**



1. MONEY LAUNDERING REGULATIONS Intending purchasers will be asked to produce identification documentation at a later stage and we would ask for your co-operation in order that there will be no delay in agreeing the sale. 2. These particulars do not constitute part or all of an offer or contract. 3. The measurements indicated are supplied for guidance only and as such must be considered incorrect. Potential buyers are advised to recheck measurements before committing to any expense. 4. We have not tested any apparatus, equipment, fixtures, fittings or services and it is in the buyers interest to check the working condition of any appliances.

Connells Residential is registered in England and Wales under company number 1489613, Registered Office is Cumbria House, 16-20 Hockliffe Street, Leighton Buzzard, Bedfordshire, LU7 1GN. VAT Registration Number is 500 2481 05.

**See all our properties at [www.connells.co.uk](http://www.connells.co.uk) | [www.rightmove.co.uk](http://www.rightmove.co.uk) | [www.zoopla.co.uk](http://www.zoopla.co.uk)**

Property Ref: WVH333271 - 0010