



BALCOMBE STREET, NW1

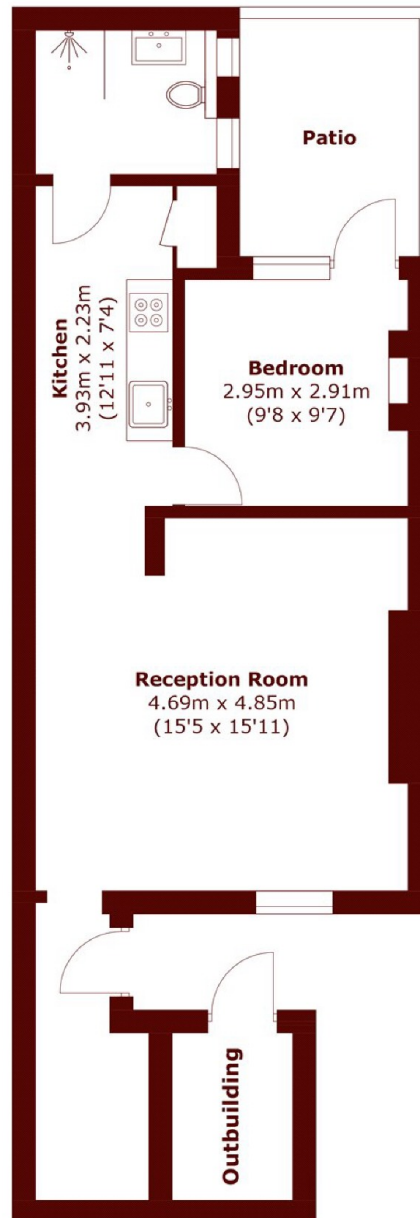
£575,000

This impressive one-bedroom apartment is situated in this stunning converted period house. The property has been fully refurbished to a meticulous standard throughout including tanking with a 30 year

Long Lease
One Double Bedroom
Private Patio

Newly Refurbished Throughout
Quiet Location
Marylebone Station

STEP INSIDE BALCOMBE STREET



Total area (approx.): 51.6 sq. m (555.4 sq. ft)
Outbuilding: 3.5 sq. m (37.7 sq. ft)

Marylebone & Mayfair
020 7935 1775

Energy Rating: D We aim to make our particulars both accurate and reliable. However, they are not guaranteed; nor do they form part of an offer or contract. If you require clarification on any points then please contact us, especially if you're traveling some distance to view. Please note that appliances and heating systems have not been tested and therefore no warranties can be given as to their good working order

MARSH &
PARSONS