



The Ridgeway, W3

£885,000

A delightful four bedroom family house set on the leafy tree lined street of The Ridgeway, a quiet, yet extremely convenient location that is close to Acton Town station and Gunnersbury Park. The area offers a truly close knit community.

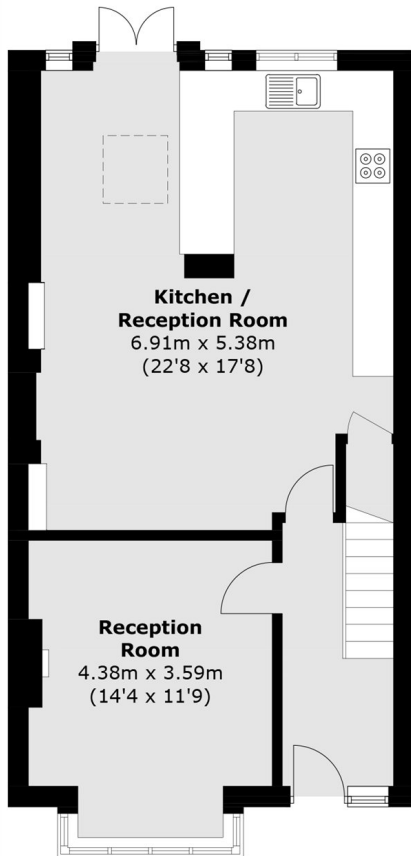
Ideal for a growing family, the house presents an opportunity not to be missed, and is offered to the market with no onward chain.

The Ridgeway is a lovely residential road forming part of the Gunnersbury Park Conservation Area, conveniently located between central hubs of Chiswick, Ealing and Acton.

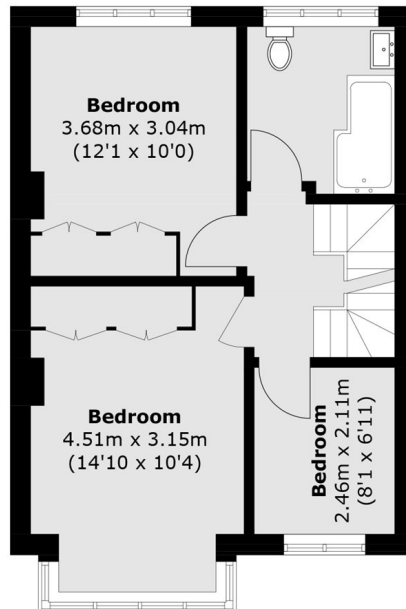
Features

- No onward chain
- Freehold
- Garage
- Garden
- Four bedrooms
- Close to Acton Town
- Easy access to A40

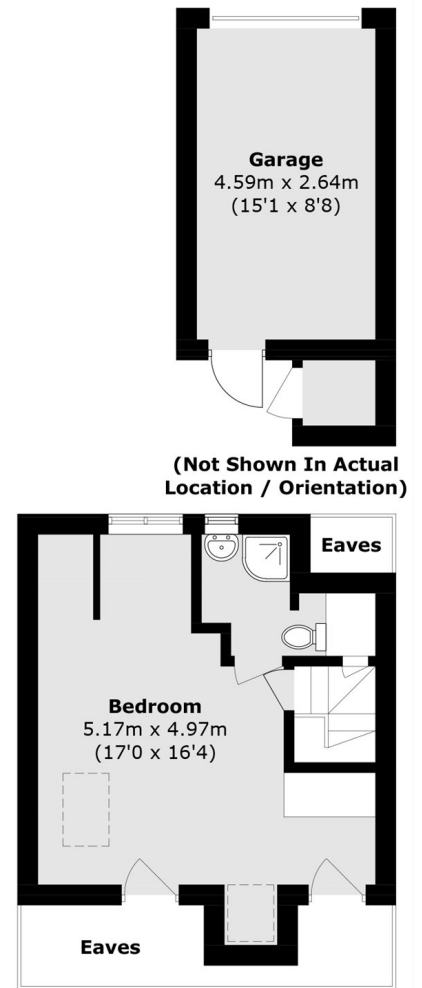
The Ridgeway, London, W3



Ground Floor



First Floor



Second Floor

Total area (approx.): 126.7 sq. m (1,363.7 sq. ft)
Garage / External Cupboard: 13.3 sq. m (143.2 sq. ft)
(Excluding Eaves)