

Flat 1, 1 Bell Foundry Close, Croydon

OIEO £350,000 Leasehold



haboodle

A Peaceful, Well-Located 833 sq.ft., Chain Free, Ground Floor Flat with Private Patio, Parking and Residents' Swimming Pool, Offered.

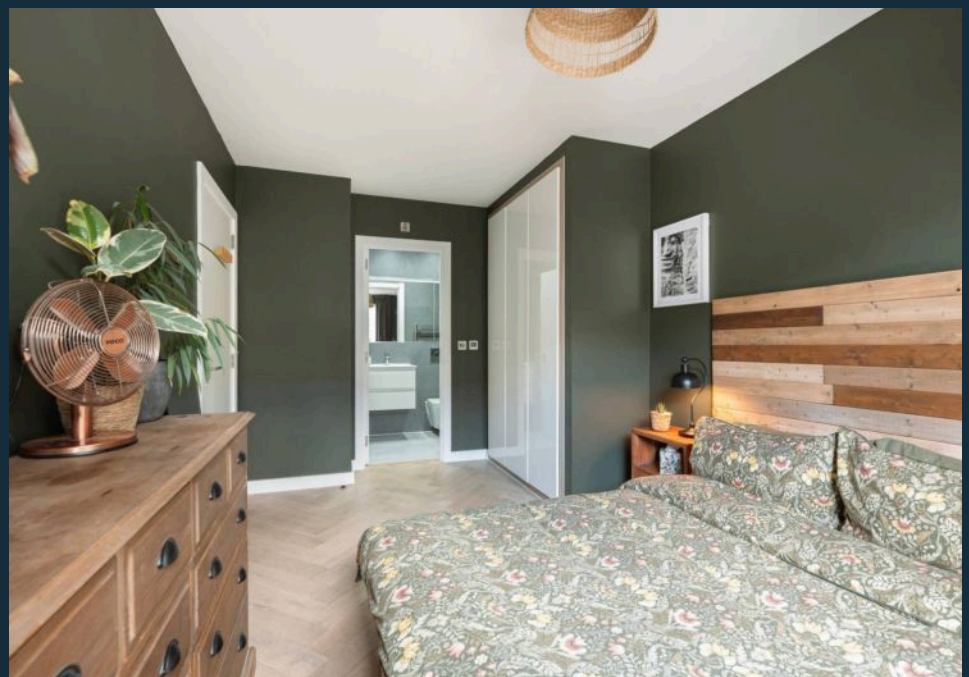
Set within the secure and highly regarded Coppice Yard development, this beautifully maintained two-bedroom flat offers a rare combination of privacy, community, and lifestyle, all just moments from the transport links of East and West Croydon.

Located on the ground floor, the flat opens into a bright and spacious open-plan living and kitchen area, complete with large floor-to-ceiling windows and direct access to a private patio. Whether you're entertaining friends or enjoying a quiet evening, this light-filled space makes it easy to feel at home.

The kitchen is sleek and modern, with integrated appliances and clean, contemporary finishes. Both bedrooms are generously proportioned; the primary has an en-suite, and the main bathroom is spacious and has been stylishly designed.



- › Offered CHAIN FREE
- › Bright Open-Plan Living/Kitchen Area
- › Contemporary Kitchen with Integrated Appliances
- › Private Patio Garden & Allocated Parking Space
- › Gated Development with Secure Video Entry
- › Allocated Parking Space
- › Exclusive Use of Residents' Heated Swimming Pool
- › Excellent Transport Links (East & West Croydon, Tramlink, Bus Routes)
- › Proactive Residents' Association
- › Pet Friendly & Well Located For



Bell Foundry Close, Croydon - CR0

Approximate Gross Internal Area = 82.0 sq m / 883 sq ft

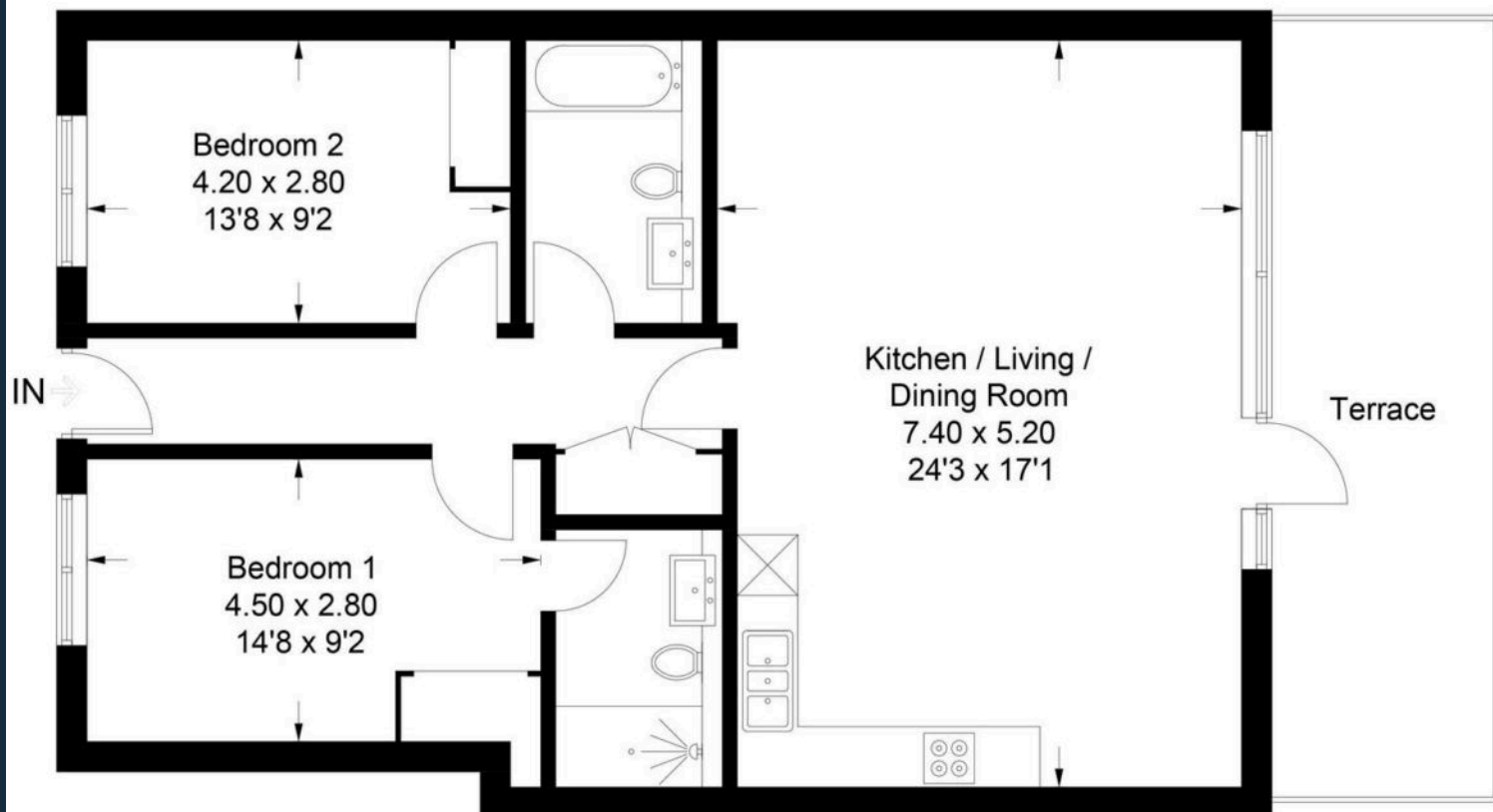


Illustration for identification purposes only, measurements are approximate, not to scale. Produced by Haboodle Estate Agents (ID1230242)



haboodle