



Guide Price
£725,000

Freehold

4x  3x  1x 

**Cordingley Drive, Pease
Pottage, Crawley, West
Sussex, RH11**

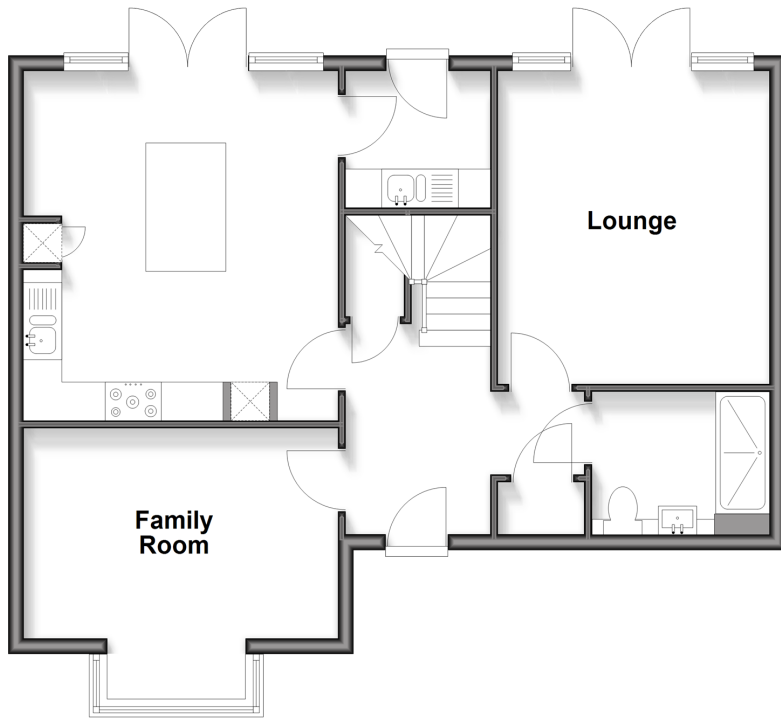
OVER 60?

Secure this property
for up to **59% less!**

cubitt & west
Helping you move forwards

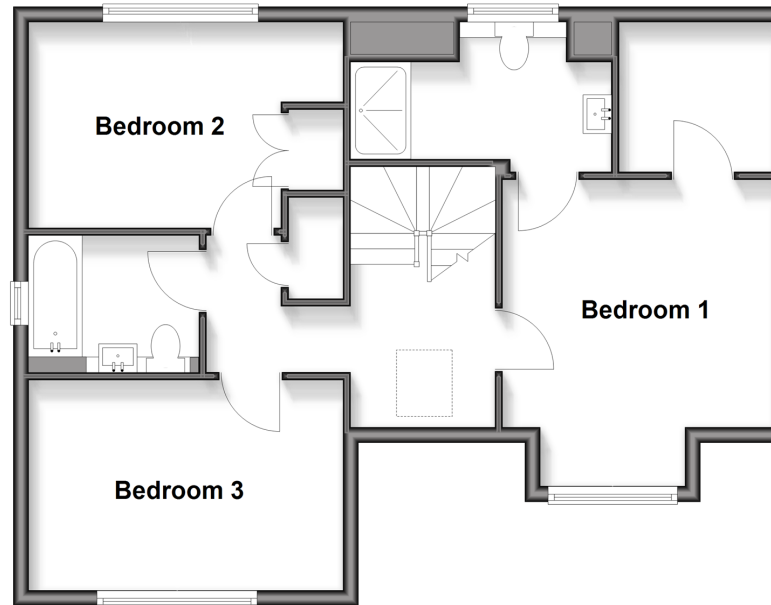
Ground Floor

Approx. 64.5 sq. metres (694.1 sq. feet)



First Floor

Approx. 61.2 sq. metres (658.9 sq. feet)



Outbuilding

Approx. 22.2 sq. metres (239.2 sq. feet)



Accommodation

GROUND FLOOR

Entrance Hall

Lounge: 13'4 x 11'7 (4.07m x 3.53m)

Wet Room : 7'7 x 5'3 (2.31m x 1.60m)

Family Room/Optional Bedroom 4: 17'0 (5.19m) narrowing to 9'2 (2.80m) x 13'5 (4.09m)

Kitchen/Diner: 16'8 x 13'6 (5.08m x 4.12m)

Utility Room: 6'2 x 5'6 (1.88m x 1.68m)

FIRST FLOOR

Landing

Bedroom 1: 13'0 (3.97m) narrowing to 10'6 (3.20m) x 11'9 (3.58m)

Walk in Wardrobe : 6'5 x 6'0 (1.96m x 1.83m)

En Suite Shower Room: 11'0 (3.36m) x 5'7 (1.70m) narrowing to 3'11 (1.19m)

Bedroom 2: 13'5 x 8'11 (4.09m x 2.72m)

Bedroom 3: 13'5 x 8'11 (4.09m x 2.72m)

Bathroom: 7'3 x 5'5 (2.21m x 1.65m)

OUTBUILDING

Garage

OUTSIDE

Front Garden

Rear Garden

Driveway

EV Charging Point



Main features

- Modern detached house built by Thakeham homes
- Quiet no through road with far reaching views
- Large fitted kitchen/diner with integrated appliances and central island
- Bedroom one has an en suite shower room
- Garage and driveway for two cars with EV charging point



Nearest Schools

Primary Schools: Woodgate 0.1 miles, Broadfield East Junior School 1.0 miles, Desmond Anderson Primary 1.1 miles

Secondary Schools: Warden Park Secondary Academy 8.5 miles



Transport Information

Train Stations: Crawley 2.0 miles, Ifield 2.5 miles, Three Bridges 2.7 miles



Address

Cordingley Drive, Pease Pottage, Crawley, West Sussex, RH11



Directions

For directions to this property please contact us.



cubitt&west
Helping you move forwards

Call Crawley Branch 01293 522233 ■ cubittandwest.co.uk



- Legal advice should be taken to verify fixtures/fittings, planning, alterations and/or lease details
- Appliances & services are untested, dimensions are approximate and floor plans are not to scale
- Through a Homewise Home For Life Plan people aged 60+ can secure this property for up to 59% less, by purchasing a Lifetime Lease



20420717/20260221/NF1/DC