



23 Lightsfield, Oakley - RG23 7BL

£360,000 Freehold

3 BEDROOMS • GARAGE • DOWNSTAIRS WC • OFF ROAD DRIVEWAY PARKING •
VILLAGE LOCATION



01256 321777



www.thepropertyexplorer.co.uk

the property
explorer

EXPLORER - We are delighted to bring to the market this traditional three bedroom home, quietly positioned on a cul-de-sac close to the heart of Oakley. The property offers a spacious lounge, separate dining room, a well-appointed kitchen, a downstairs WC, off-road driveway parking to the front and a garage located in a nearby block.

Council Tax band: D

Tenure: Freehold



- 3 BEDROOMS
- GARAGE
- DOWNSTAIRS WC
- OFF ROAD DRIVEWAY PARKING
- VILLAGE LOCATION





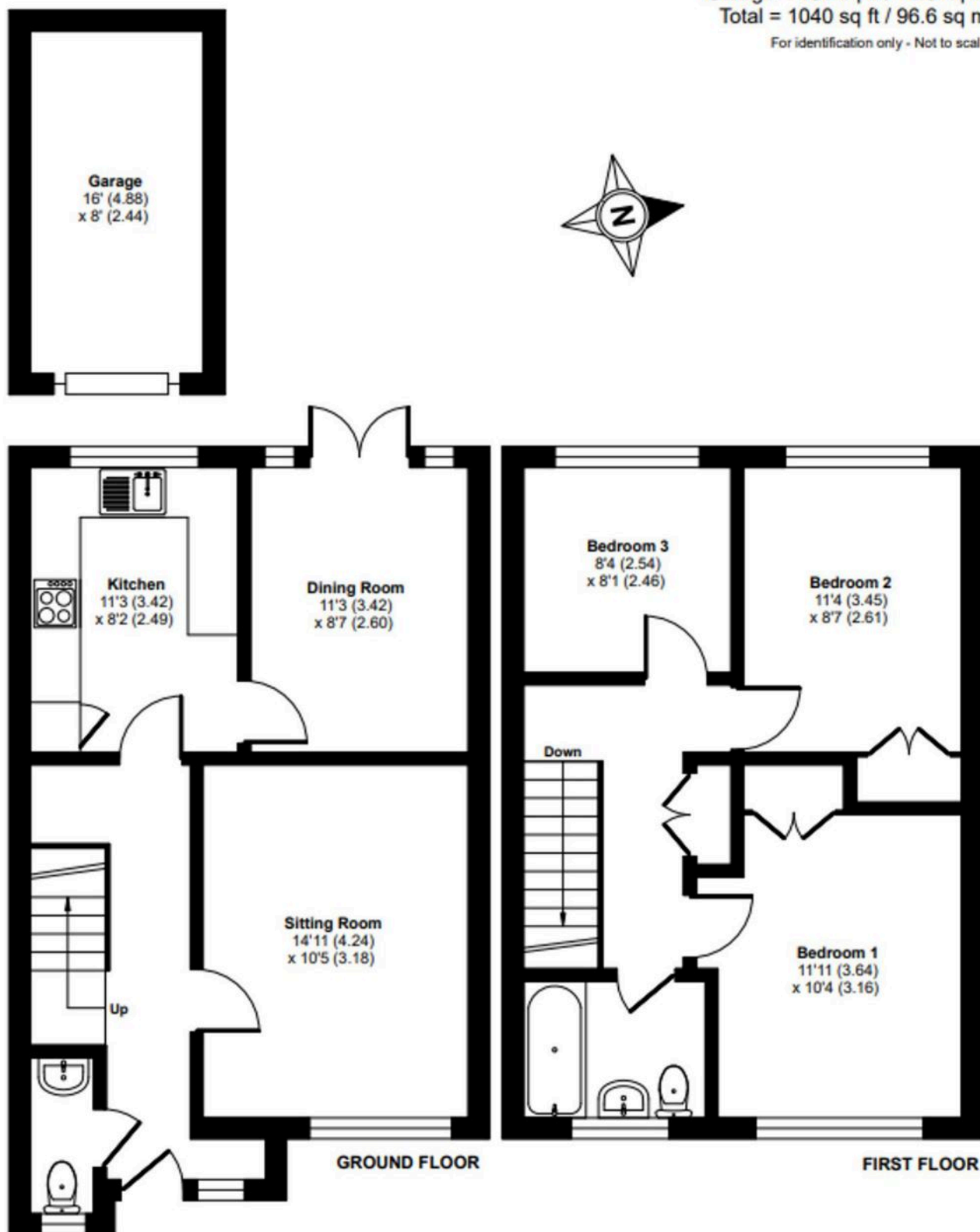
Lightsfield, Oakley, Basingstoke, RG23

Approximate Area = 908 sq ft / 84.3 sq m

Garage = 132 sq ft / 12.3 sq m

Total = 1040 sq ft / 96.6 sq m

For identification only - Not to scale



Floor plan produced in accordance with RICS Property Measurement 2nd Edition, incorporating International Property Measurement Standards (IPMS2 Residential). © r@chicom 2025. Produced for Property Explorer. REF: 1358356