



JOWEBSTER

Rowan Lodge
Kensington Green, W8



Property Attributes

- Three Bedrooms (One En-suite)
- Kitchen
- Double Aspect Reception Room
- One Underground Car Parking Space
- 24 Hour Security
- Gym
- Landscaped Communal Gardens

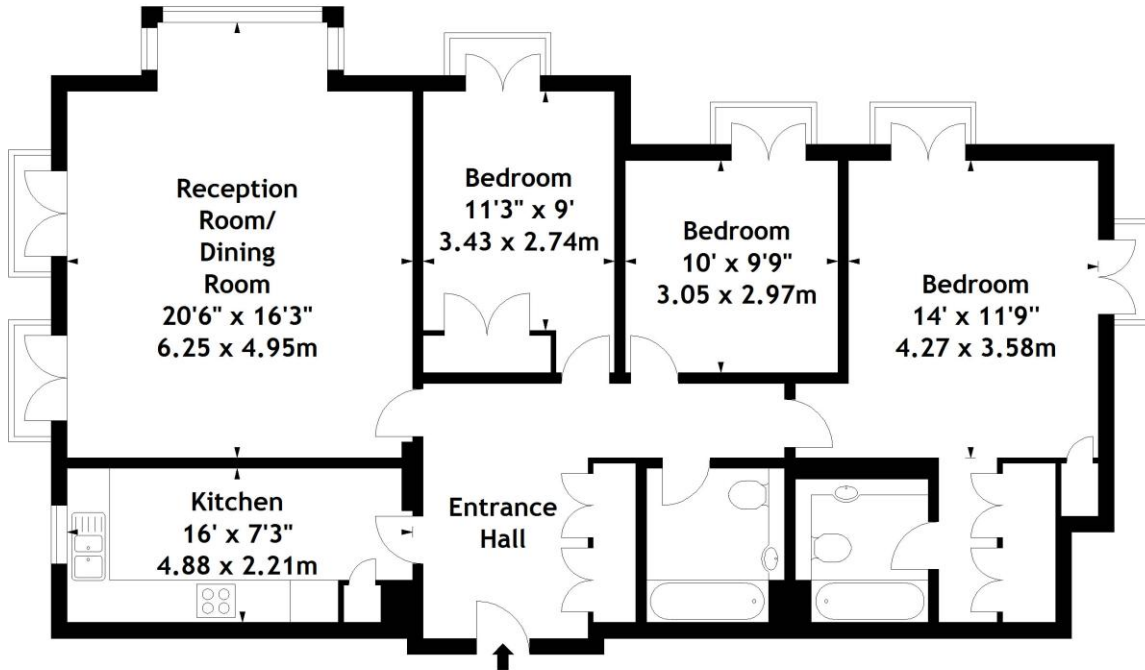


Terms

- Price: £2,250,000
- Borough: Royal Borough of Kensington And Chelsea
- Tenure: Share of Freehold approx. 960 years remaining
- Service Charge: Approx. £11,249 per annum
- Ground Rent: Approx. £200 per annum
- Council Tax Band: Band H



Rowan Lodge, W8
Approx. Gross Internal Area
1160 Sq Ft - 107.76 Sq M



First Floor

Measured in accordance with RICS guidelines. Every attempt is made to ensure accuracy, however all measurements are approximate. This floor plan is for illustrative purposes only and is not to scale.

© Datagraphy Ltd 2013

Photographs * Floorplans * Virtual Tours
Tel: 0845 643 4401 www.datagraphy.com

+44 (0) 20 7349 7055
sales@jowebster.com

Misdescription Act

We wish to advise prospective purchasers that these sales particulars are believed to be correct, but their accuracy is in no way guaranteed, nor do they form any part of contract. We have not carried out a detailed survey nor tested the services, appliances or specific fittings. Measurements are approximate.