



Broadway Court

Crouch End Hill, N8

£2,050 pcm

A bright four-bedroom apartment set over the first floor of a period building. The property comprises; reception room, separate kitchen, two double bedroom and two single bedrooms and a family bathroom.



Broadway Court

Crouch End Hill, N8

- Four-Bedroom First Floor Apartment
- Bright Reception Room
- Separate Kitchen
- Two Double Bedrooms & Two Single Bedrooms
- Family Bathroom
- Excellent Location



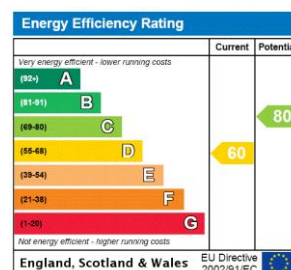
A four-bedroom apartment set over the first floor of a period building located in the heart of Crouch End. The property comprises; reception room, separate kitchen, two double bedroom and two single bedrooms and a family bathroom.

This bright property has wooden flooring throughout and offers flexible accommodation depending on your needs. Offered on a part furnished basis and available from the end of August.

Well located for easy access to the many local amenities that Crouch End has to offer.

Tenure: Long Let
Part Furnished

Additional tenant charges apply (fees apply to non-AST tenancies only)
 Tenancy Agreement Fee: £300
 References per Tenant/Guarantor: £60
 Inventory check (approx. £100 – £250 inc. VAT)
[chestertons.com/property-to-rent/applicable-fees](https://www.chestertons.com/property-to-rent/applicable-fees)

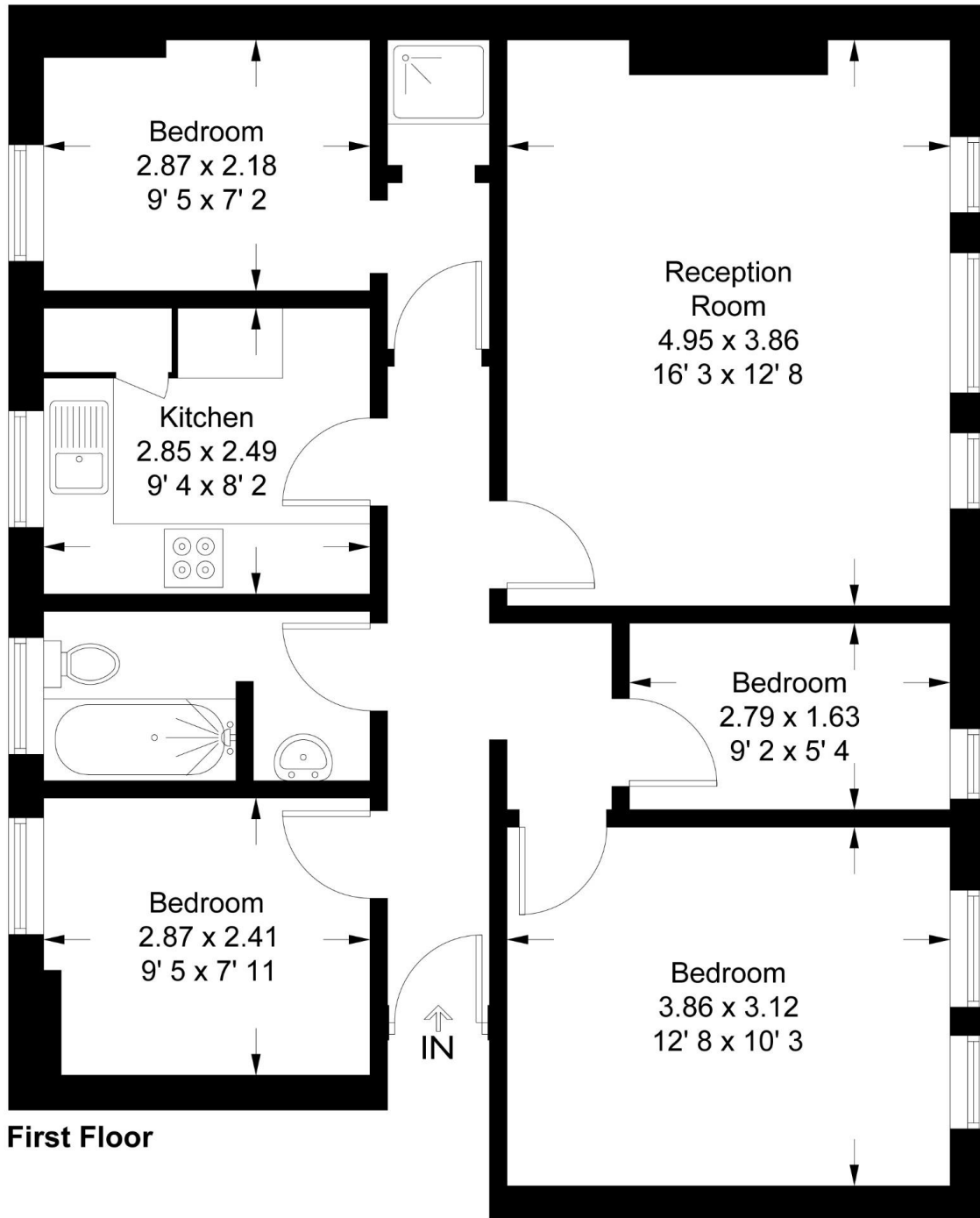


Chestertons Kentish Town Lettings

225 Kentish Town Road
 London
 NW5 2JU
lettings.kentishtown@chestertons.com
 02072671010
[chestertons.com](https://www.chestertons.com)

Broadway Court

Approximate Gross Internal Area = 800 sq ft / 74.3 sq m



This plan is not to scale and must be used as layout guidance only. All measurements and areas are approximate and should not be relied upon to provide accurate information. This plan must not be relied upon when making property valuations, design considerations or any other such relevant decisions. We accept no responsibility or liability (whether in contract, tort or otherwise) in relation to any loss whatsoever arising from or in connection with any use of this plan or the adequacy, accuracy or completeness of it or any information within it.