



## Hamlet Road, Haverhill, CB9 8QQ

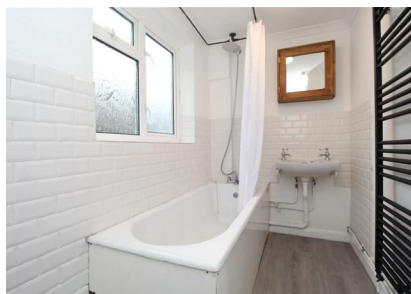
Rent - £1,350 PCM

Deposit - £1,557

This well-presented three-bedroom home has been recently redecorated and benefits from new carpets throughout, offering a fresh, move-in-ready interior. The ground floor features a welcoming lounge, a separate dining room, and a kitchen/breakfast room, creating a practical and comfortable layout for modern living. A bathroom and additional storage complete the ground floor accommodation.

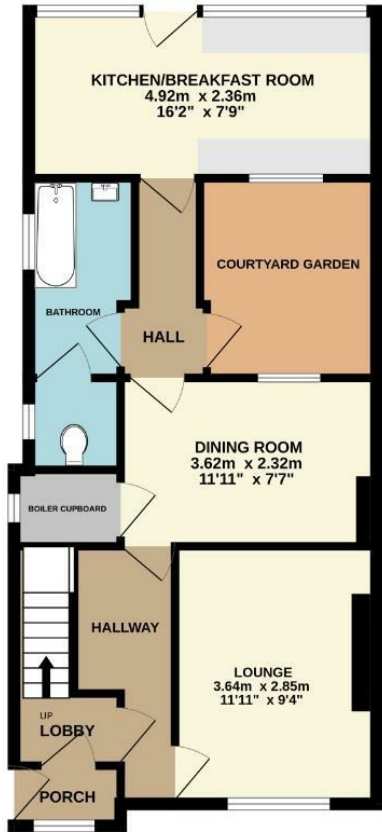
Upstairs, the property offers three bedrooms, including a main double bedroom. Externally, the home offers a large garden and outside courtyard space.

- SEMI DETACHED HOME
- THREE BEDROOMS
- LOUNGE & DINING ROOMS
- EPC RATING - C
- LARGE GARDEN & COURTYARD
- RECENTLY REDECORATED
- NEW CARPETS
- KITCHEN/BREAKFAST ROOM
- COUNCIL TAX - B
- AVAILABLE NOW



Council Tax Band: B - EPC Rating: C 69

GROUND FLOOR  
55.9 sq.m. (602 sq.ft.) approx.



1ST FLOOR  
28.1 sq.m. (302 sq.ft.) approx.



TOTAL FLOOR AREA: 84.0 sq.m (904 sq.ft.) approx.

Whilst every attempt has been made to ensure the accuracy of the floorplan contained here, measurements of doors, windows, rooms and any other items are approximate and no responsibility is taken for any error, omission or mis-statement. This plan is for illustrative purposes only and should be used as such by any prospective purchaser. The services, systems and appliances shown have not been tested and no guarantee as to their operability or efficiency can be given.  
Made with Metropix ©2023

