



## Key Features

- ◆ Two-bedroom, second-floor flat
- ◆ Surrounded by local shops and cafes
- ◆ Easy access to train station and town centre
- ◆ Popular Roselands area of Eastbourne
- ◆ Walking distance from parks and seafront
- ◆ EPC rating C

2  1  1 

Seaside, Roselands, Eastbourne

£1000 PCM



Northwood are delighted to welcome to market this recently redecorated, two-bedroom, second-floor apartment in a purpose-built block in the Roselands area of Eastbourne.

Accommodation comprises: living room, kitchen, two double bedrooms and bathroom with shower over bath.

Further benefits include gas central heating, double-glazing and secure entry-phone.

Located in the Roselands area of Eastbourne, surrounded by local shops and cafes, only a few minutes walk from the seafront and local parks and on major bus routes for easy access to the town centre and train station, this bright, spacious apartment is ideally placed for making the most of life on the Sunshine Coast.

Please view our immersive virtual tour to fully appreciate this fantastic property:

<https://tour.giraffe360.com/87e8dde9f631432786674e4c60e13b82>

Mobile Phone Coverage and Broadband speeds can be checked on the Ofcom website: <https://checker.ofcom.org.uk/>

Council Tax Band B: £2065

Holding Deposit: £230.00 (equivalent to one week's rent)  
Full Deposit: £1150.00 (holding deposit + equivalent of four weeks' rent)  
1st month's rent + Full Deposit: £2150.00

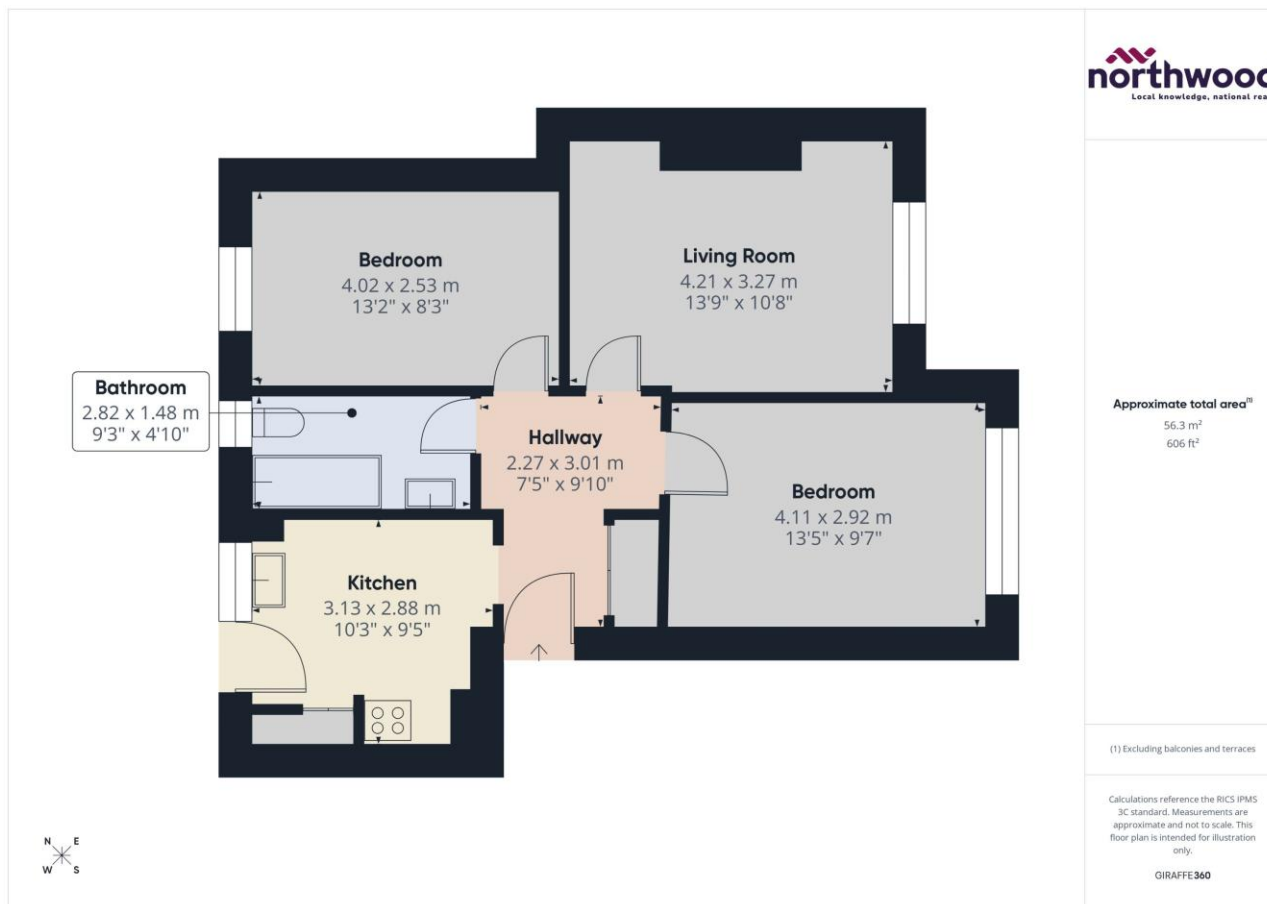
Total household income must exceed £30,000 to be considered for this property.

This property is managed directly by the landlord.

In accordance with the Renters Rights Act, a tenant may submit a written request to own a pet at this property.







SEE MORE ONLINE

## Northwood

81-83 South Street  
Eastbourne  
BN21 4LR  
01323 744544  
eastbourne@northwooduk.com