



Newcastle Drive, Nottingham  
£1,250 pcm

 **Comfort**  
Estates

## Newcastle Drive, Nottingham

Comfort Estates are delighted to present this spacious duplex apartment, boasting fantastic views across Nottingham Castle and the highly sought-after Park Estate.

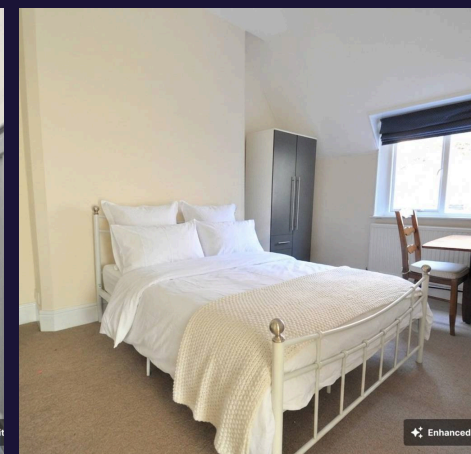
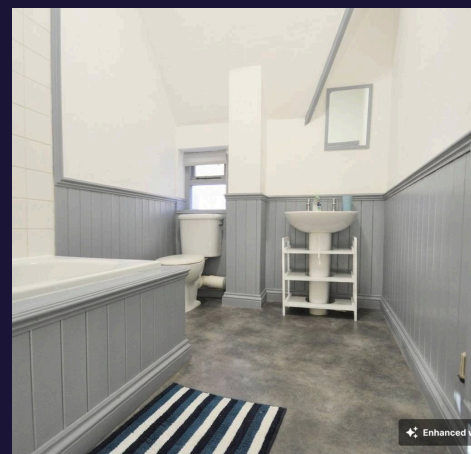
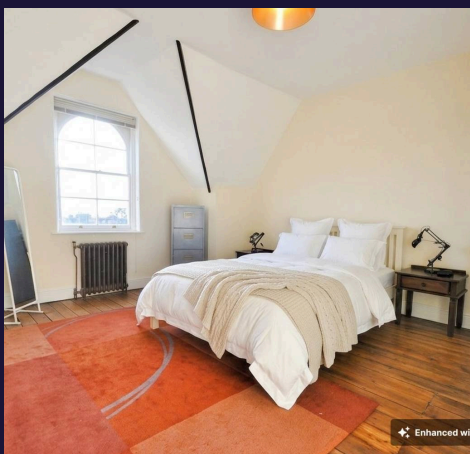
Arranged over two floors, this generously proportioned home offers light and well-balanced accommodation throughout. The property comprises a bright open-plan kitchen/dining area complete with integrated fridge/freezer and dishwasher, a separate utility room with washing machine, a large and inviting lounge, downstairs WC, two double bedrooms, and a modern bathroom fitted with a shower over bath.

On-street permit parking is available via the Park Estate Office.

Situated within the prestigious Park Estate, this exceptional location offers a peaceful and private setting while remaining just a short walk from Nottingham City Centre, local amenities, and excellent bus and tram links.

Offered furnished, the property is available to rent from 10th July 2026.

Please note, Park Estate fees are not included in the rent and are charged at £39pcm, payable alongside the monthly rent.





### **Lounge**

17' 9" x 15' 1" (5.40m x 4.59m)

Featuring a large triple window that fills the room with natural light while offering spectacular views across the prestigious Park Estate, this spacious living room combines comfort and character. Beautifully presented in neutral décor, the space is enhanced by a charming decorative mantelpiece with a gas fire, creating a warm and inviting focal point. The room is furnished with two two-seater sofas complete with decorative cushions, making it the perfect setting for both relaxing and entertaining.

### **Kitchen Diner**

16' 3" x 14' 8" (4.96m x 4.46m)

A spacious and well-proportioned kitchen diner, thoughtfully designed to offer both practicality and style. The kitchen features attractive cream wall and base units with wooden worktops, complemented by elegant display cabinets for added character. Fully equipped for modern living, the space includes a gas hob, sink, integrated fridge/freezer, dishwasher, and access to a separate utility room housing a washing machine. A dining table with chairs for two is also provided, creating the perfect space for everyday dining and entertaining.

### **Downstairs WC**

5' 11" x 4' 5" (1.81m x 1.34m)

A convenient cloakroom, ideal for guests, comprising a low-level WC and wash hand basin.

◆◆ Enhanced



### **Bedroom One**

16' 7" x 15' 2" (5.05m x 4.62m)

A generously sized bedroom full of charm and character, enhanced by a distinctive sloped ceiling and an attractive feature window that allows for plenty of natural light. Finished in neutral décor with wooden flooring throughout, the room offers a bright and inviting atmosphere. Furnished with a double bed, chest of drawers, and mirror, this well-presented space provides both comfort and practicality.

### **Bedroom Two**

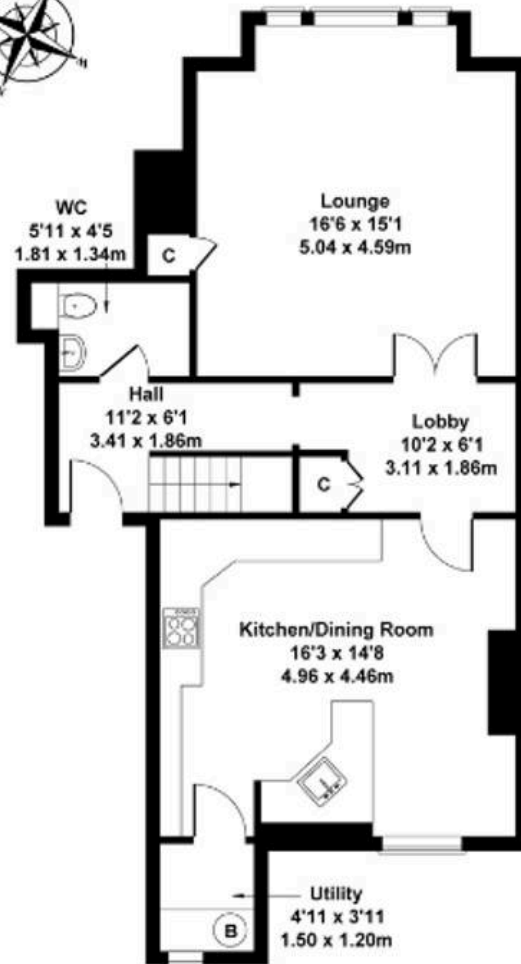
15' 1" x 10' 0" (4.61m x 3.04m)

A bright and spacious bedroom featuring a large window that allows for an abundance of natural light. Finished in neutral décor with soft carpeting throughout, the room offers a warm and versatile living space. Fully furnished with a double bed, two double wardrobes, and a desk with chair, this room is ideal for both comfortable living and home working, making it perfectly suited for use as a bedroom with dedicated office space.

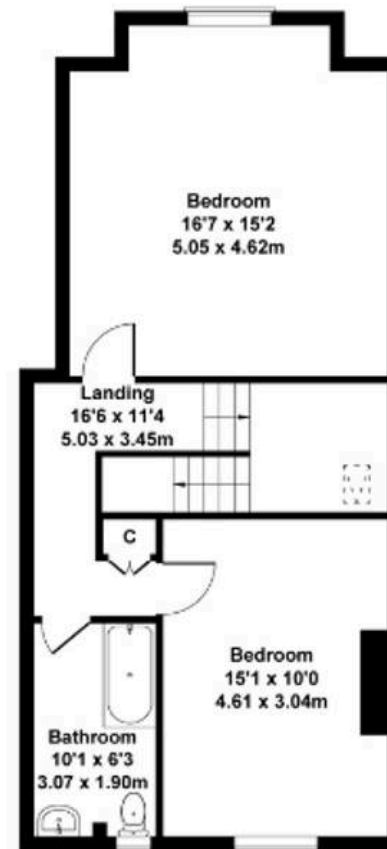
### **Bathroom**

10' 1" x 6' 3" (3.07m x 1.90m)

A generously sized bathroom, tastefully finished with attractive grey panelling and a contrasting grey for easy maintenance. The space is well appointed with a full-sized bath and shower over, wash hand basin, and WC, offering both style and practicality in a clean, modern setting.



**GROUND FLOOR**



**FIRST FLOOR**

Not to Scale. Produced by The Plan Portal 2025  
For Illustrative Purposes Only.



## Comfort Estates

Comfort Estates, 47 Derby Road - NG1 5AW

0115 9338997 • [info@comfortestates.co.uk](mailto:info@comfortestates.co.uk) • [www.comfortestates.co.uk](http://www.comfortestates.co.uk)