

TO LET



samuel estates
Lettings & Sales

Meath Crescent, Bethnal Green E2

£2,200.00 PCM

 **2**

 **2**


samuel estates
YOUR PROPERTY • OUR BUSINESS

Property Description

A spacious two bedroom, two bathroom apartment at the Space2 development in Bethnal Green with pleasant views overlooking Meath Gardens. The property boasts two double bedrooms, is well finished through out and is furnished to a high standard.

Located between Canary Wharf and the City, Space2 is a short walk from both Bethnal Green and Mile End Tube stations offering quick access to Liverpool Street / Bank as well as to the Docklands. In addition to excellent transport links this development also benefits from offering a concierge service.



Disclaimer

Samuel Estates their clients and any joint agents give notice that they are not authorised to make or give any representation or warranties in relation to the property. No responsibility is assumed for any statement that may be made in these lettings particulars. These particulars do not form any part of any offer or contract and must not be relied upon as statements or representation of fact. Any distances, measurements or areas are approximate. The text, photographs and floorplans are for guidance only and not comprehensive in any way. Samuel Estates have not tested any services, appliances or facilities and prospective tenants must satisfy themselves by inspection.

Material Information

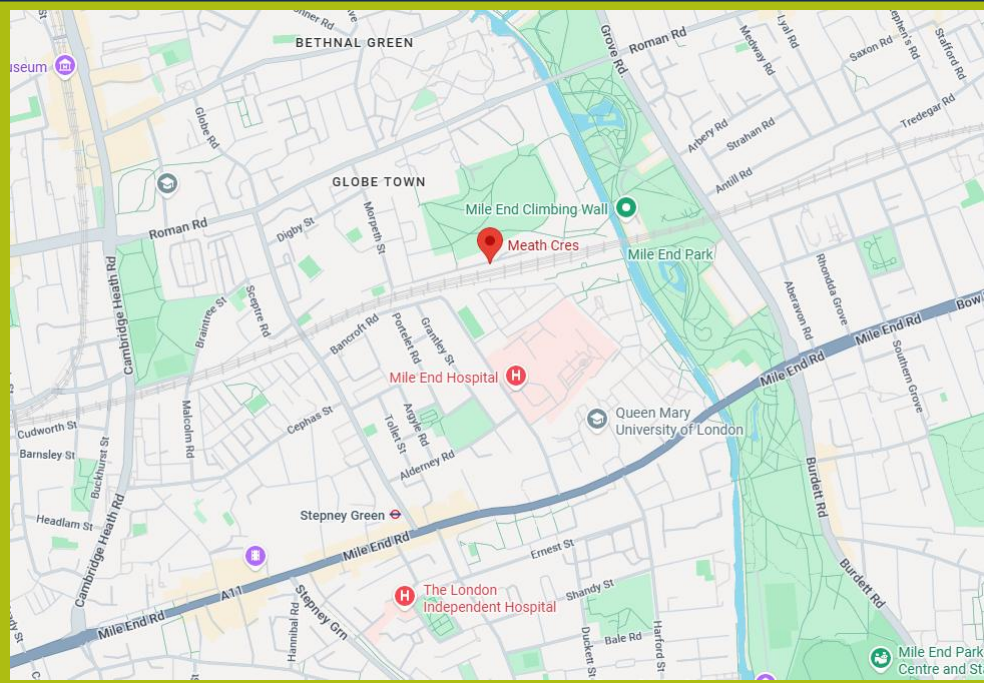
Date Available – 01/06/2026

Holding deposit amount – £507

Security Deposit amount (Five weeks rent) – £2,538.00

Council Tax Band – D

Local Authority – Tower Hamlet Council



Property Type

Apartment (Purpose Build)



Construction Type

Brick



Parking

No Parking



Listed Building Status

None



Water Supply

Thames Water



Electricity Supply

Mains



Heating

Electric



Broadband

Cable



Mobile Signal

Good Coverage



Flood Risk

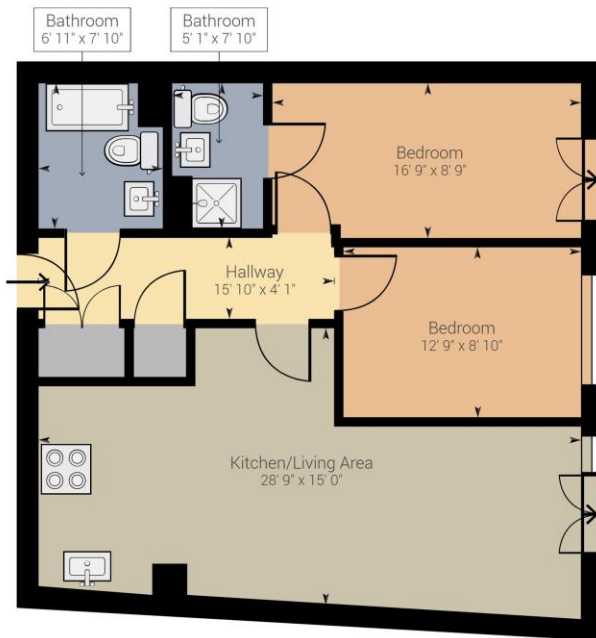
Has the property been flooded in the past five years: NO

Level of Risk: None



Proposed Development in Immediate Locality?

None



Approximate net internal area: 785.01 ft² / 72.93 m²
 While every attempt has been made to ensure accuracy, all measurements are approximate, not to scale. This floor plan is for illustrative purpose only and should be used as such by any prospective tenant or purchaser.

Powered by Giraffe360



Energy Efficiency Rating

	Current	Potential
Very energy efficient - lower running costs		
92-100 A		
81-91 B		87
69-80 C	78	
55-68 D		
39-54 E		
21-38 F		
1-20 G		

Balham
 45 Bedford Hill,
 London, SW12 9EY
 ☎ 020 8673 4666

Colliers Wood & Wimbledon
 30 Watermill Way,
 London, SW19 2RT
 ☎ 020 8090 9000

Streatham
 432/434 Streatham High Road
 London, SW16 3PX
 ☎ 020 8679 9889

