



Jex Road, Norwich, NR5 8XJ

welcome to

Jex Road, Norwich

****OFFERED VIA MODERN METHOD OF AUCTION**** A three-bedroom mid terrace property situated within a convenient and sought after location, close to a variety of amenities. ****CHAIN FREE****



Auctioneer's Comments

This property is offered through Modern Method of Auction. Should you view, offer or bid your data will be shared with the Auctioneer, iamsold Limited. This method requires both parties to complete the transaction within 56 days, allowing buyers to proceed with mortgage finance (subject to lending criteria, affordability and survey). The buyer is required to sign a reservation agreement and make payment of a non-refundable Reservation Fee of 4.5% of the purchase price including VAT, subject to a minimum of £6600.00 including VAT. This fee is paid in addition to purchase price and will be considered as part of the chargeable consideration for the property in the calculation for stamp duty liability. Buyers will be required to complete an identification process with iamsold and provide proof of how the purchase would be funded. The property has a Buyer Information Pack containing documents about the property. The documents may not tell you everything you need to know, so you must complete your own due diligence before bidding. A sample of the Reservation Agreement and terms and conditions are contained within this pack. The buyer will also make payment of no more than £349 inc. VAT towards the preparation cost of the pack. Please confirm exact costs with the auctioneer. The estate agent and auctioneer may recommend the services of other providers to you, in which they will be paid for the referral. These services are optional, and you will be advised of any payment, in writing before any services are accepted. Listing is subject to a start price and undisclosed reserve price that can change.

Entrance Hall

Door to lounge, stairs to first floor.

Lounge/Diner

12' x 10' 3" (3.66m x 3.12m)

Double glazed door to front, double glazed window to front aspect, radiator, carpeted flooring, door to bedroom 4/dining room.

Dining Room/Bedroom Four

11' 10" x 6' 4" (3.61m x 1.93m)

Double glazed window to rear aspect.

Kitchen

11' 8" x 9' 10" (3.56m x 3.00m)

Double glazed window to front aspect, wall and base units with work surface.

Bedroom One

16' 10" x 10' (5.13m x 3.05m)

Double glazed window to front and rear aspect, radiator, carpeted flooring.

Bedroom Two

10' 8" x 9' 11" (3.25m x 3.02m)

Double glazed window to rear aspect, radiator, carpeted flooring.

Bedroom Three

12' x 6' 8" (3.66m x 2.03m)

Double glazed window to front aspect, radiator, carpeted flooring.

Bathroom

Double glazed window to rear aspect, fully tiled, walk in shower, wc, wash hand basin, radiator.

Front Garden

Low maintenance garden with low level fence with steps and path to front door.

Rear Garden

Fully enclosed, generous sized garden with raised pond and patio area, offering a blank canvas.



view this property online williamhbrown.co.uk/Property/NOR143674

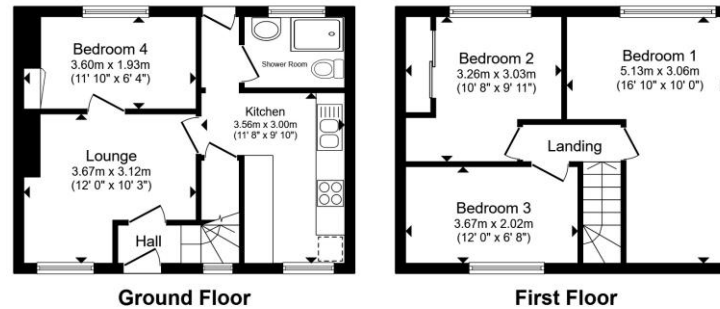


welcome to

Jex Road, Norwich

- Sale by Modern Auction (T&Cs apply)
- Subject to an undisclosed Reserve Price
- Buyers fees apply
- **OFFERED VIA MODERN METHOD OF AUCTION*
- Mid-terraced home

Tenure: Freehold EPC Rating: C
Council Tax Band: A



guide price

£160,000

Total floor area 69.0 m² (743 sq.ft.) approx
This floor plan is for illustrative purposes only. It is not drawn to scale. Any measurements, floor areas (including any total floor area), openings and orientation are approximate. No details are guaranteed, they cannot be relied upon for any purpose and they do not form part of any agreement. No liability is taken for any error, omission or misstatement. A party must rely upon its own inspection(s). Powered by www.propertybox.io

william
h brown



Please note the marker reflects the
postcode not the actual property

view this property online williamhbrown.co.uk/Property/NOR143674



Property Ref:
NOR143674 - 0002

1. MONEY LAUNDERING REGULATIONS Intending purchasers will be asked to produce identification documentation at a later stage and we would ask for your co-operation in order that there is no delay in agreeing the sale. 2. These particulars do not constitute part or all of an offer or contract. 3. The measurements indicated are supplied for guidance only and as such must be considered incorrect. Potential buyers are advised to recheck measurements before committing to any expense. 4. We have not tested any apparatus, equipment, fixtures or services and it is in the buyers interest to check the working condition of any appliances. 5. Where an EPC, or a Home Report (Scotland only) is held for this property, it is available for inspection at the branch by appointment. If you require a printed version of a Home Report, you will need to pay a reasonable production charge reflecting printing and other costs. 6. We are not able to offer an opinion either written or verbal on the content of these reports and this must be obtained from your legal representative. 7. Whilst we take care in preparing these reports, a buyer should ensure that his/her legal representative confirms as soon as possible all matters relating to title including the extent and boundaries of the property and other important matters before exchange of contracts.



william h brown



01603 760044



norwich@williamhbrown.co.uk



5 Bank Plain, NORWICH, Norfolk, NR2 4SF



williamhbrown.co.uk