



[iwstates.com](http://iwstates.com)

## 49 Ellis Avenue, Stevenage, SG1 3SL

### Offers In Excess Of £325,000

Welcome to this stunning and thoughtfully refurbished three bedroom family home situated on the highly sought-after Ellis Avenue, offering easy access to Stevenage Old Town and prestigious schools, including Thomas Alleyne Academy. This property has been meticulously maintained, with the kitchen and bathroom refurbished circa 2021 and the lounge recently repainted, creating a fresh and contemporary feel throughout. A unique storage alcove cleverly tucked beneath the staircase adds character and practical functionality. The rear garden is a true feature, boasting a stunning koi pond (koi not included), a raised decked patio ideal for entertaining, and a paved pathway leading down the lawn to a large shed and a powered home office. Side access to the front garden enhances practicality, making this an ideal space for family living and entertaining alike. This home combines modern comfort, clever design, and an enviable location, making it a rare opportunity for buyers seeking a stylish and versatile family home in a prime area of Stevenage.

- Cosy decent size lounge with real working fireplace
- Tasteful bathroom refurbished circa 2021
- Double glazing throughout
- Short walking distance to Stevenage Railway Station and Thomas Alleyne Academy
- Desirable Old Town Location
- Three decent sized bedrooms
- Modern fitted kitchen with space for American-style fridge-freezer
- Generous rear garden complete with pond and two large sheds, one of which houses a home office



## The Owners Love

1) We love our beautiful large garden space where in the warmer weather we regularly enjoy sitting on the decking looking out over the area, wine in hand. It's so peaceful, tranquil & having the allotments backing on makes it a wonderfully private garden where we can relax & really unwind.

2) During the winter months we light our stunning open fire which makes our lounge so cosy & warm. It looks especially beautiful over the festive period with our gorgeously decorated Christmas Tree, lights & we close the kitchen door, light a fire & enjoy a hot chocolate where all our worries fade away.

3) The location of our home is especially beneficial due to the close proximity of Stevenage old town, the train station & local schools. We have brought up 3 children in our home & having schools close by was such a help. We often walk to the old town to enjoy the delights of the local pubs & restaurants.

## Ground Floor

### Lounge

12'8 x 13'5 max

Real working fireplace. UPVC double glazed windows to front aspect. Bespoke fitted storage units framing the fireplace, creating a cosy focal point. Recently repainted. Radiator. Bi-fold door to kitchen.

### Kitchen

9'1 x 10'3

Refurbished circa 2021. Wall and base units with marbled countertop over. Integrated dishwasher. Two UPVC double glazed windows to rear aspect. Spotlights. Radiator. Space to accommodate for an American-style fridge-freezer.

## Bathroom

5'7 x 5'6

Refurbished circa 2021. Electric shower. Vanity unit with integrated basin. Heated towel rail. Spotlights. Frosted UPVC double glazed window to side aspect.

## Separate WC: Opposite

2'7 x 4'6 max

Low flush WC. Cloakroom hand wash basin. Frosted UPVC double glazed window to side aspect. Spotlights.

## First Floor

### Master Bedroom

10'01 x 14'01 max

Sliding mirrored wardrobes housing wall-mounted television and hanging clothes rails. UPVC double glazed window to front aspect. Radiator. Stair bulkhead housing staircase below.

### Bedroom Two

12'1 x 9'1 max

Radiator. U

### Bedroom

7'2 x 9'1

Radiator. U

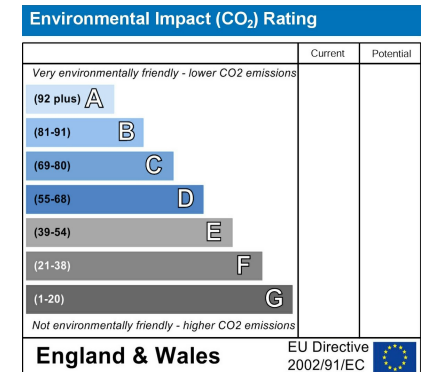
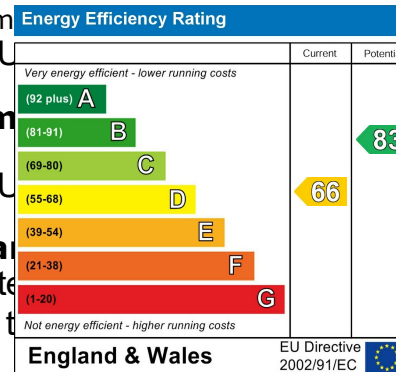
### Front Garden

Low maintenance

access to t

### Rear Garden

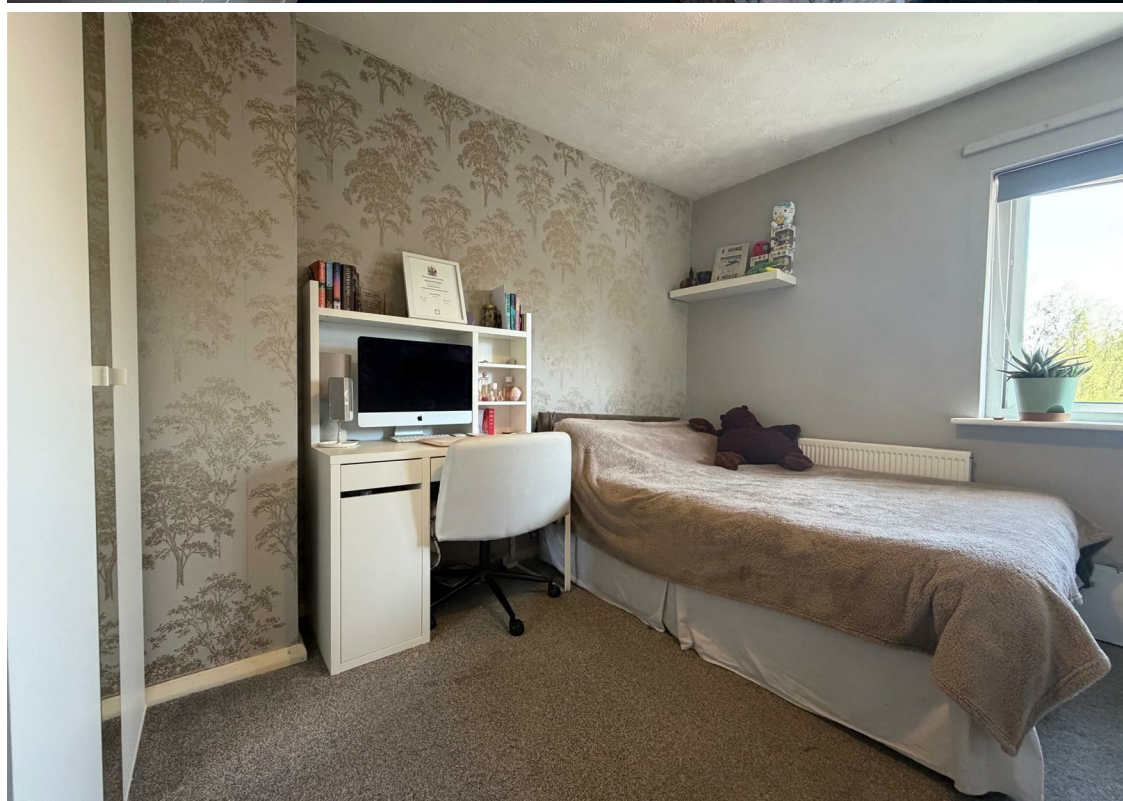
Raised decked patio with pond. Paved path over the lawn leading to large shed and home office to the rear.



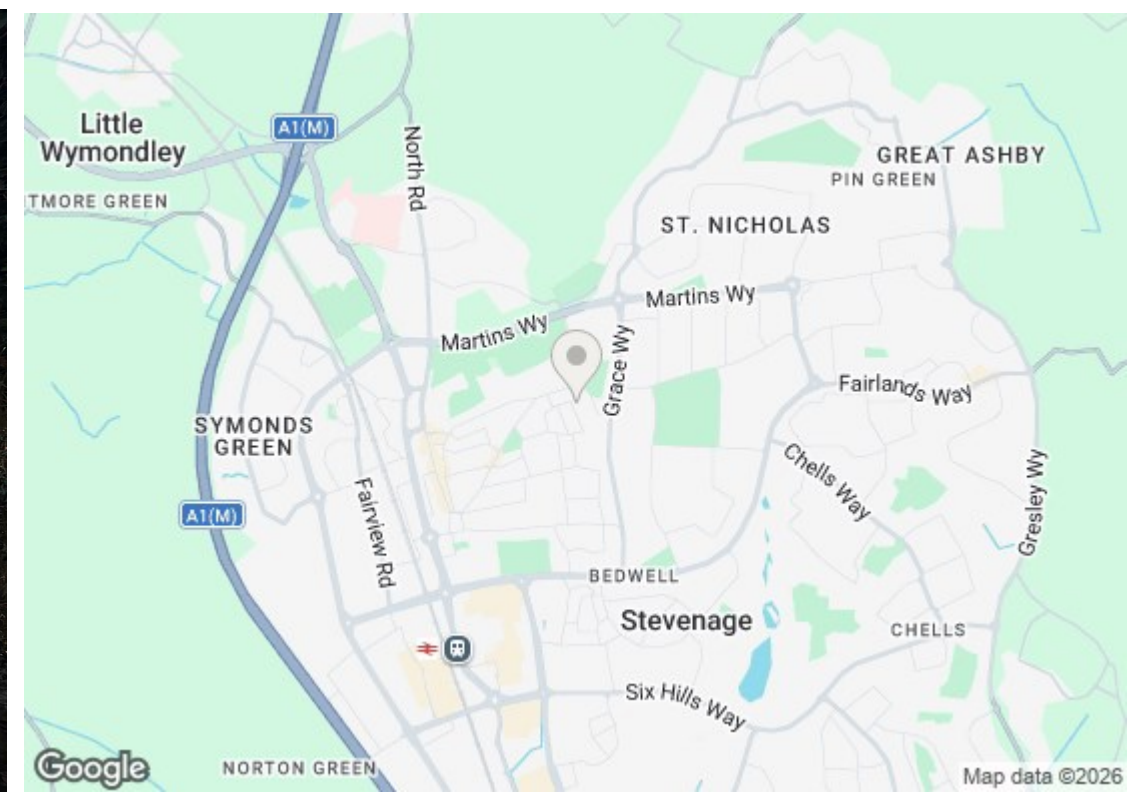
These particulars are intended to give a fair and reliable description of the property but no responsibility is taken by the agent for their accuracy. They do not constitute an offer or contract. We have not tested any services or appliances (including central heating if fitted) referred to in these particulars and the purchasers are advised to satisfy themselves as to the working order and condition. If a property is unoccupied at any time there may be reconnection charges for any switched off/disconnected or drained services or appliances - All measurements are approximate. If you are thinking of selling your home or just curious to discover the value of your property, iWEstates would be pleased to provide free, no obligation sales and marketing advice. Even if your home is outside the area covered by our local offices we can arrange a Market Appraisal through our national network of iWEstates estate agents.











GROUND FLOOR



1ST FLOOR



