



3 Buttercup Close, Hythe, SO45 3NT
£439,950



ANTHONY JAMES
PROPERTIES



3 Buttercup Close

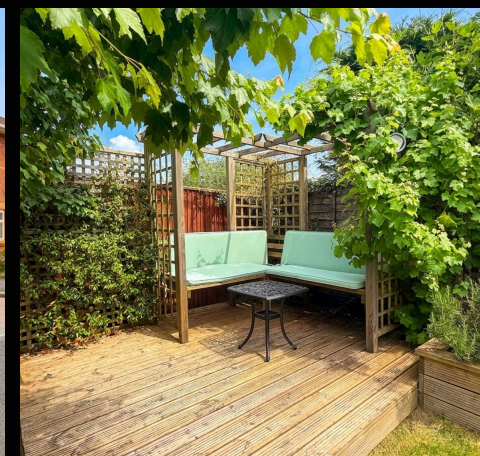
Hythe, Southampton

Impressive extended three-bedroom detached house.. Open plan kitchen/dining/family room. A separate lounge provides a further area to relax, while the ground floor WC adds convenience. Upstairs, the principal bedroom benefits from its own ensuite, a stylish shower room serving the remaining bedrooms.

Outside, a block paved frontage provides off-road parking for several vehicles, leading to a single garage with an electric roller shutter door, power, lighting, and a wall-mounted gas boiler (with a rear pedestrian door for easy access). A timber gate opens to the sunny, enclosed rear garden, featuring a generous patio and a lawned area. The timber decked seating area in one corner offers an ideal spot to relax, while the summer house provides additional space for storage or leisure.

Council Tax band: E

Tenure: Freehold

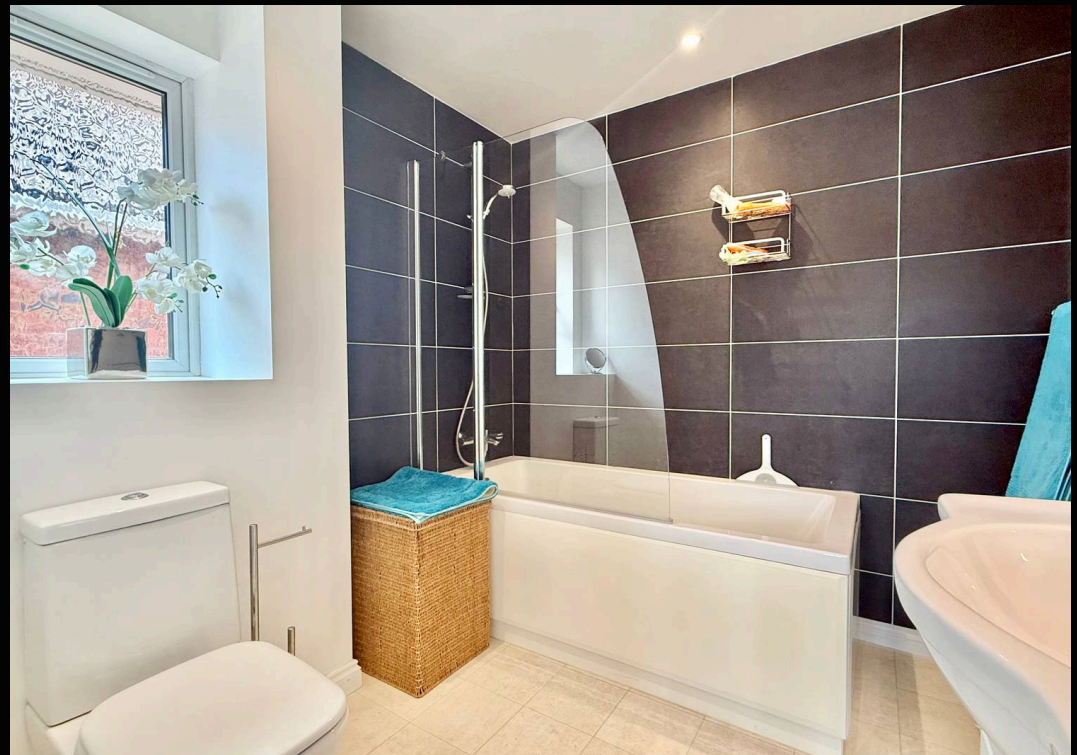


1 Southward House
Dibden Purlieu SO45 4PT

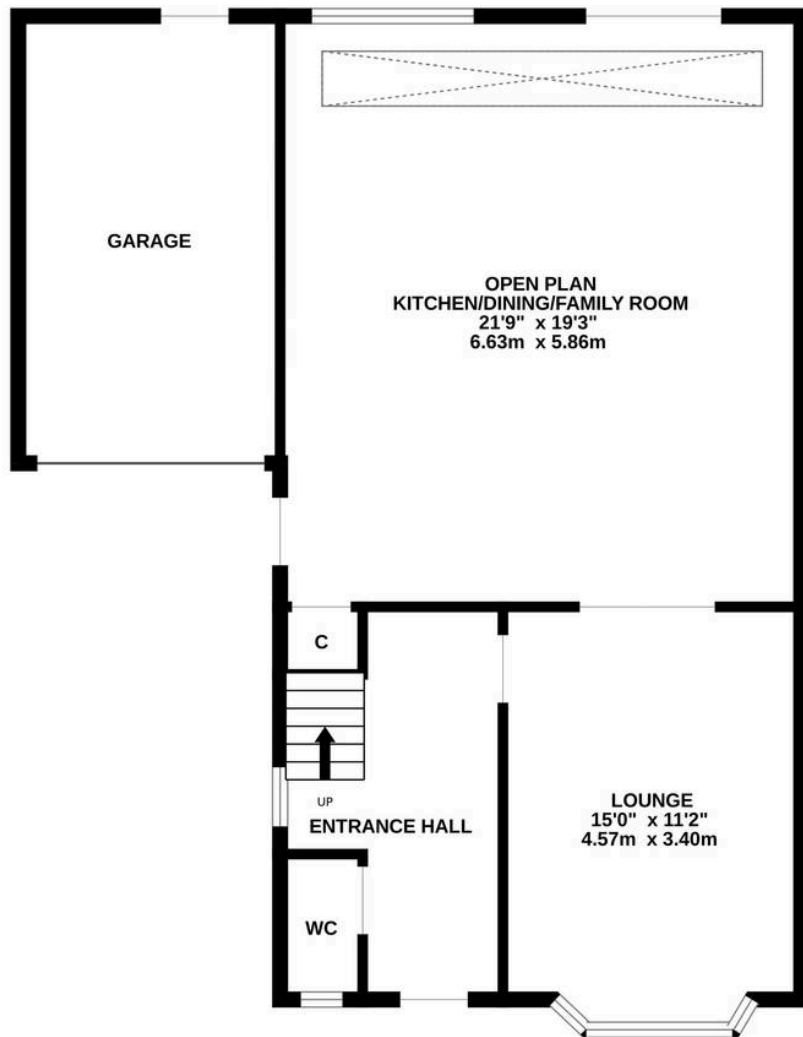


T: 02380 844405
info@anthonyjamesproperties.co.uk

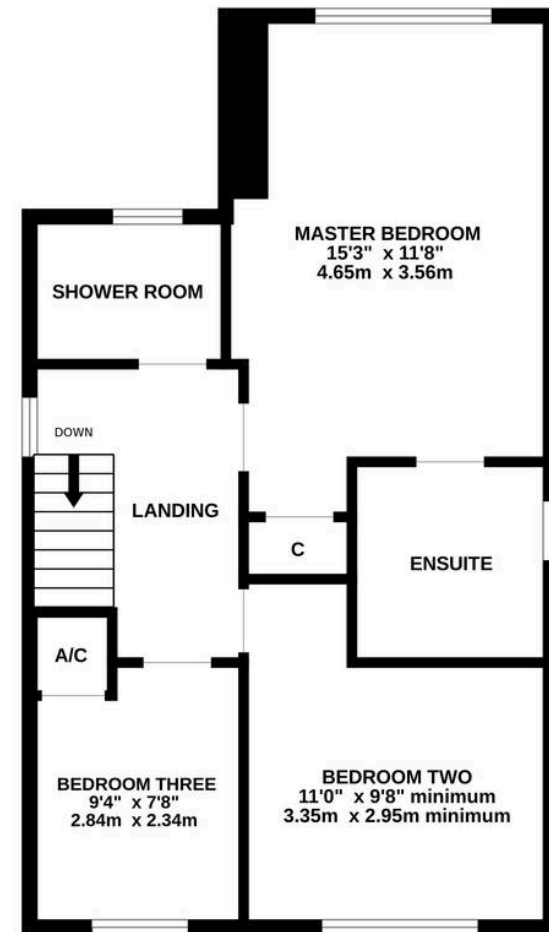




GROUND FLOOR



1ST FLOOR



Whilst every attempt has been made to ensure the accuracy of the floorplan contained here, measurements of doors, windows, rooms and any other items are approximate and no responsibility is taken for any error, omission or mis-statement. This plan is for illustrative purposes only and should be used as such by any prospective purchaser. The services, systems and appliances shown have not been tested and no guarantee as to their operability or efficiency can be given.
Made with Metropix ©2026