



WARREN HOUSE, W14

£900,000

Two Bedrooms
Two Bathrooms
Wooden Floors
Porter and Lift
Great Kensington Location
Leasehold

@marshandparsons
marshandparsons.co.uk

MARSH &
PARSONS



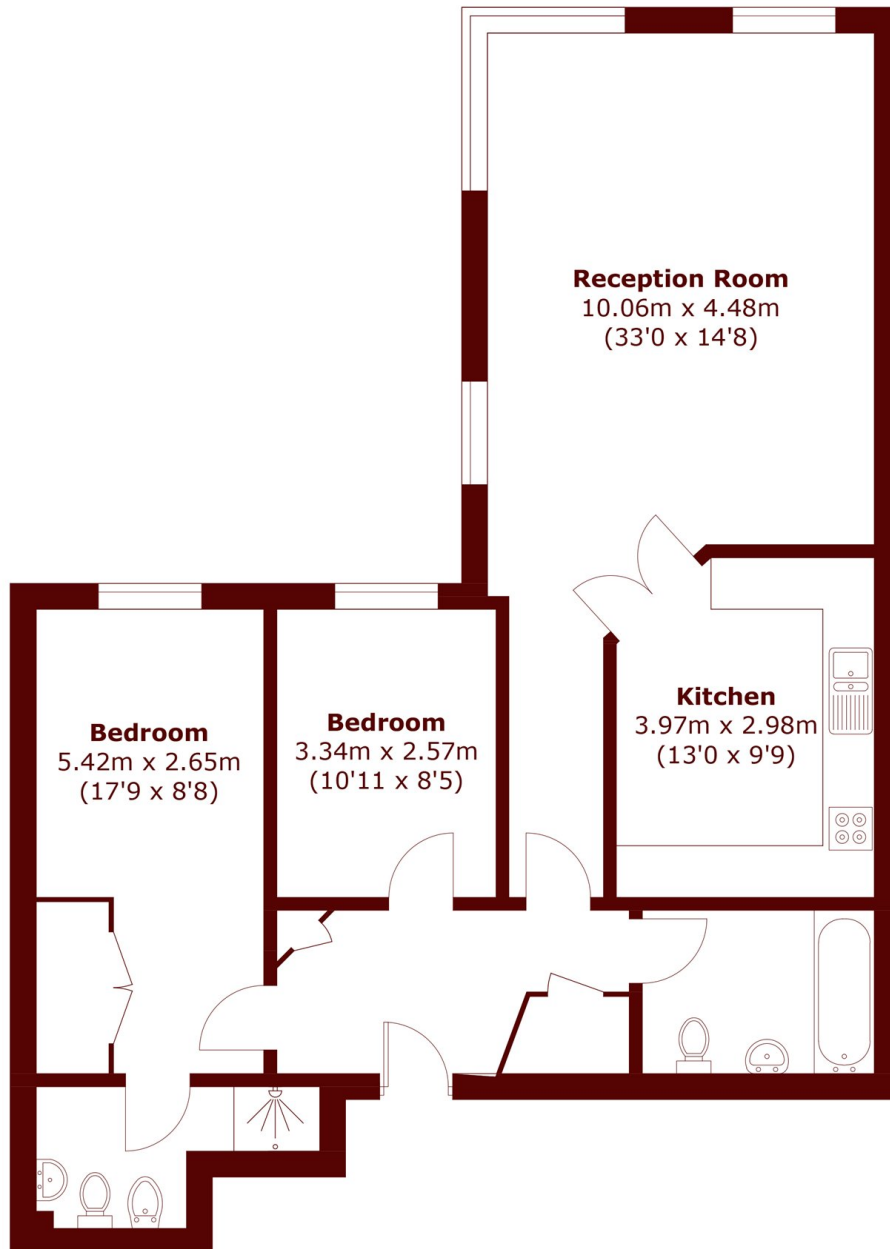
ABOUT THE PROPERTY

A spacious flat with two, double bedrooms, two bathrooms, wooden floors, porter and lift.

Warren House is conveniently located moments from Kensington High Street (District and Circle lines) and Earls Court (Piccadilly line). The property is also a short stroll up to the green open spaces of Holland Park.



STEP INSIDE WARREN HOUSE



Total area (approx.): 87.4 sq. m (940.7 sq. ft)

Kensington
020 7368 4450

Energy Rating: B We aim to make our particulars both accurate and reliable. However, they are not guaranteed; nor do they form part of an offer or contract. If you require clarification on any points then please contact us, especially if you're traveling some distance to view. Please note that appliances and heating systems have not been tested and therefore no warranties can be given as to their good working order

**MARSH &
PARSONS**