

Abbey Road, St Johns Wood, London, NW8 9BJ



£540 pw

[£2,340.00 pcm] [fees apply]

2 bedroom(s)

Available: Available Now

Available for long term rental this spacious 2 bedroom, 2 bathroom apartment (994 sq ft; 92 sq m) set on the 2nd floor in the iconic development of 20 Abbey Road superbly located to take advantage of everything St Johns Wood has to offer. EPC: D

- Iconic development; 2nd fl
- Approx 994 sq ft (92 sq m)
- Available unfurnished
- Spacious reception room
- Fully fitted kitchen
- 2 x double bedrooms
- 2 x bathroom/WC's
- Heated pool for residents
- 24-hour concierge; CCTV
- Underground parking space

T: 020 7691 9000

E: info@excel-property.co.uk

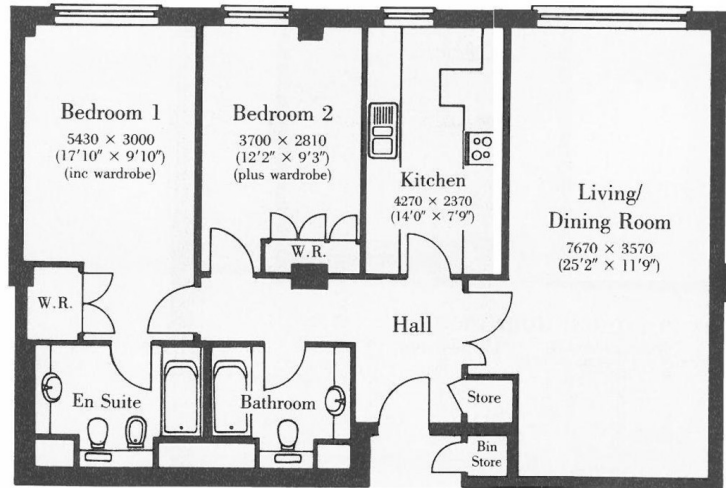
W: www.excel-property.co.uk

JP: www.excel-property.london/JP

A: 146 Finchley Road, London, NW3 5HS

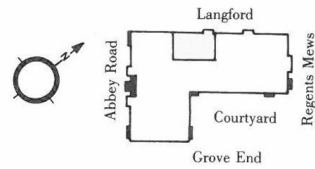


Abbey Road, St Johns Wood, London, NW8 9BJ



Not to scale

92.41 Sq. M. (994 Sq. Ft.)



T: 020 7691 9000

E: info@excel-property.co.uk

W: www.excel-property.co.uk

JP: www.excel-property.london/JP

A: 146 Finchley Road, London, NW3 5HS

