



BEAUFORT GREEN

Comeragh Road, W14

£550,000



Set within an elegant Victorian building on Comeragh Road, this beautifully proportioned first-floor apartment combines generous living space with a calm, understated finish. High ceilings, large sash windows and retained period detailing give the home a strong sense of character, while carefully considered updates make it equally suited to modern living.

The reception room is a standout feature, with a wide bay window, high ceilings and retained period details including a cast iron fireplace, decorative cornicing and bespoke shelving. To the rear, the separate kitchen is finished with contemporary cabinetry and opens directly onto a private balcony, extending the living space outdoors. The double bedroom benefits from fitted wardrobes, while the bathroom is bright and neatly finished.

Positioned within easy reach of both West Kensington and Barons Court, Comeragh Road offers a well-connected W14 location with local amenities, green spaces and transport links close by.





BEAUFORT GREEN



BEAUFORT GREEN

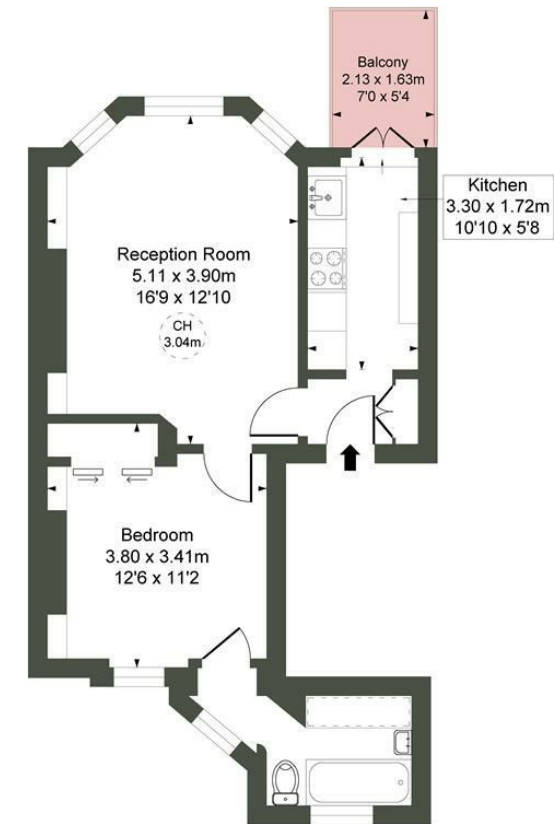
Comeragh Road,
W14

GIA
(Appox)

44.15 sqm / 475 sqft

Excluding Restricted Height
(under 1.5m)

43.33 sqm / 466 sqft



First Floor

At a Glance.

- First-floor apartment
- One double bedroom
- Private balcony
- Bay-fronted reception
- Period features
- West Kensington location

CH refers to the ceiling height in this plan. This floor plan is provided for illustrative purposes only and has been prepared in accordance with the RICS Code of Measuring Practice. It is not to scale, and all measurements and areas are approximate and should not be relied upon for accuracy. The plan should not be used for valuation or other decision-making purposes. Whilst every effort has been made to ensure accuracy, no responsibility is accepted for any errors or omissions.

BEAUFORT GREEN

02074594100

charlie@beaufortgreen.co.uk

263 New Kings Road
London
SW16 1DB