

Extended three bedroom semi detached family home with garage and two parking spaces within a cul de sac location and within easy reach of local schools.

The Accommodation Comprises:-

Door with window to side into:

Entrance Hall:-

Stairs to first floor, long line radiator.

Cloakroom:-

Window to side, close coupled WC, wash hand basin.

Lounge:- 17' 6" x 11' 4" (5.33m x 3.45m) Maximum Measurements

Window to front elevation, under-stairs cupboard, radiator, door to storage cupboard, door to:

Kitchen:- 14' 8" x 9' 7" (4.47m x 2.92m)

Range of base and eye level units with work surfaces, sink unit, space for five ring Range oven, spaces for washing machine, tumble dryer and fridge freezer, tiled floor, breakfast bar, pull-out larder, integrated dishwasher.

Dining Room:- 14' 1" x 12' 9" (4.29m x 3.88m)

Windows to rear and side elevations, French doors giving access to garden, radiator, tiled floor.

First Floor Landing:-

Access to loft.

Bedroom 1:- 14' 8" x 10' 1" (4.47m x 3.07m)

Window to rear, radiator.

Bedroom 2:- 10' 11" x 8' 9" (3.32m x 2.66m)

Window to front elevation, radiator.

Bedroom 3:- 11' 8" x 5' 8" (3.55m x 1.73m)

Window to front elevation, radiator.

Shower Room:- 6' 3" x 5' 5" (1.90m x 1.65m)

Window to side elevation, chrome heated towel rail, close coupled WC, wash hand basin inset vanity unit, shower cubicle with shower curtain.

Outside:-

Front garden, gate gives pedestrian access to rear garden which has wooden decking, astroturf lawn, garden sheds, courtesy door to garage, two allocated parking spaces.

Nota Bene

Council Tax Band: - Fareham Borough Council. Tax Band C

Tenure: - Freehold

Property Type: - Semi Detached House

Electricity Supply: - Mains

Gas Supply: - Mains

Water Supply: - Mains.

Sewerage: - Mains

Heating: - Gas Central Heating

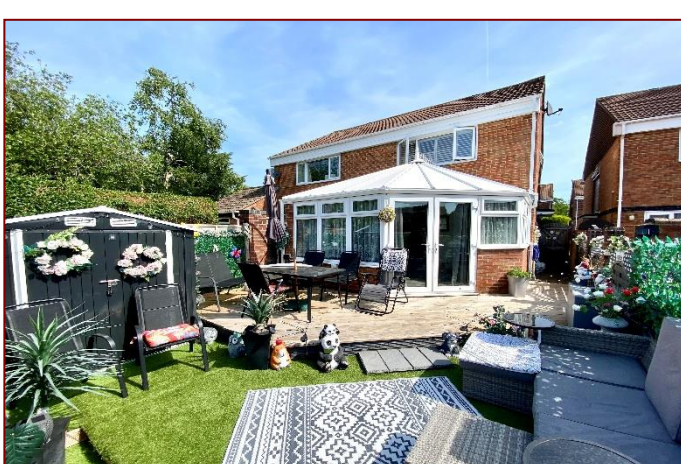
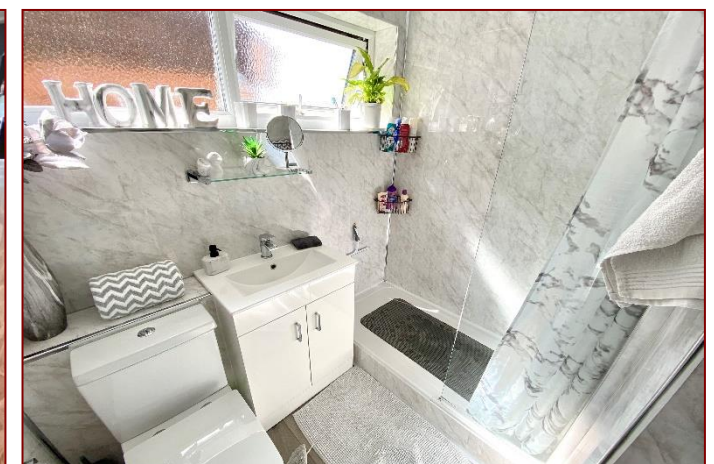
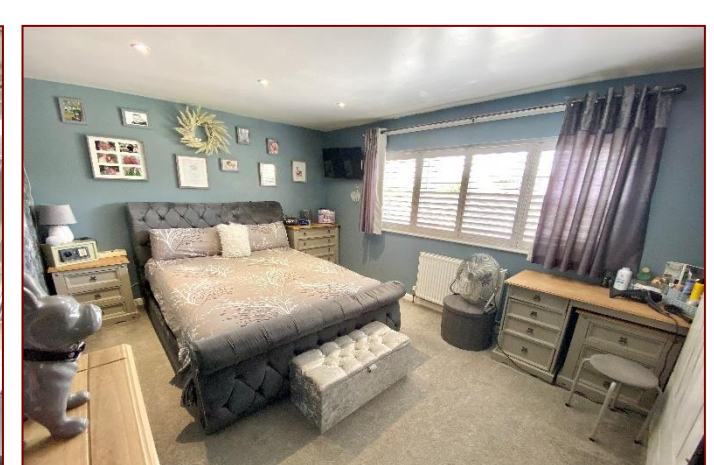
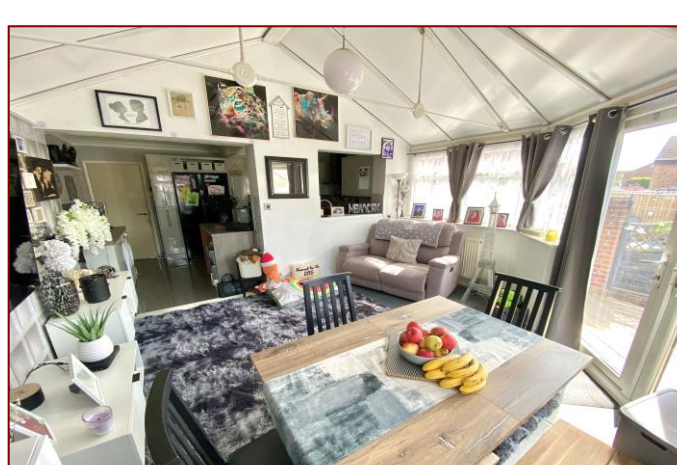
Parking: Garage and Parking

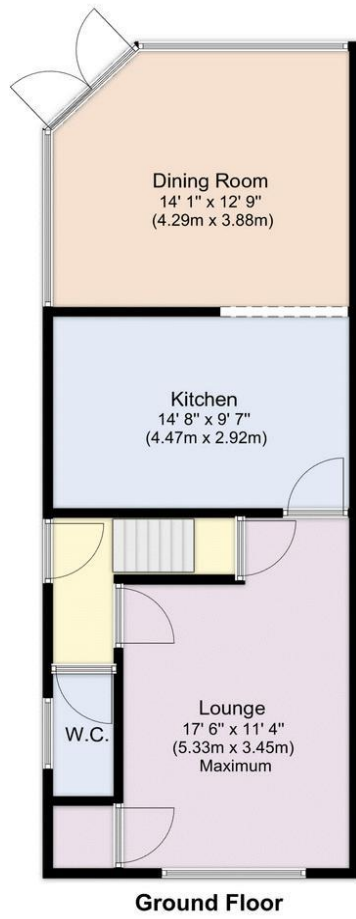
Broadband - Please check here for potential broadband speeds - <https://www.openreach.com/fibre-broadband>. Up to 1600 mps download speed

Mobile signal: The current seller informs us that they have mobile signal and are no current black spots. Please check here for all networks - <https://checker.ofcom.org.uk/>

Flood Risk: - No flooding reported. Please check flood risk data at the Environment Agency's website (<http://www.environment-agency.gov.uk/homeandleisure/floods/31656.aspx>)?

Fenwicks has further details on request.





Awaiting EPC

Disclaimer: These particulars are set out as a general outline in accordance with the Consumer Protection from Unfair Trading Regulations 2008 (CPR's) and Business Protection from Misleading Marketing Regulations 2008 (BPR's) only for the guidance of intending purchasers or lessees, and do not constitute any part of an offer or contract. Details are given without any responsibility, and any intending purchasers, lessees or third parties should not rely on them as statements or representations of fact, but must satisfy themselves by inspection or otherwise as to the correctness of each of them.

We have not carried out a structural survey and the services, appliances and specific fittings have not been tested. All photographs, measurements, floor plans and distances referred to are given as a guide only and should not be relied upon for the purchase of carpets or any other fixtures or fittings. Gardens, roof terraces, balconies and communal gardens as well as tenure and lease details cannot have their accuracy guaranteed for intending purchasers. Lease details, service ground rent (where applicable) are given as a guide only and should be checked and confirmed by your solicitor prior to exchange of contracts.

No person in the employment of Fenwicks Estates Ltd has any authority to make any representation or warranty whatever in relation to this property. Purchase prices, rents or other prices quoted are correct at the date of publication and, unless otherwise stated, exclusive of VAT.

Data Protection: We retain the copyright in all advertising material used to market this Property.

Money Laundering Regulations 2017: Intending purchasers will be required to produce identification documentation once an offer is accepted.



£350,000

16 Walton Court, Fareham, PO15 6EZ

DRAFT DETAILS

Fenwicks

THE INDEPENDENT ESTATE AGENT

Fenwicks - Fareham Office: 01329 285 500 www.fenwicks-estates.co.uk