



5 Field Gardens, Steventon OX13 6TE



5 Field Gardens

Impressive larger design of modern two-bedroom ground floor apartment offering much improved and superbly presented accommodation throughout, well situated within this small select village development, offering easy pedestrian access to many nearby amenities, sold with no ongoing chain.

Field Gardens is an exclusive and select development, ideally situated in the heart of one of the area's most sought-after villages. The village offers a comprehensive range of amenities, including a well-regarded primary school, historic church, a large and attractive village green with excellent sporting facilities, a general store with post office, hairdressers, and three highly regarded public houses. The location provides excellent vehicular access to the nearby towns of Abingdon and Didcot, the latter offering a mainline railway station with fast services to London Paddington in approximately 45 minutes. The A34 is also easily accessible, providing convenient routes to Oxford and the wider road network.

Bedrooms: 2 Bathrooms: 1 Reception Rooms: 2

Council Tax band: C

Tenure: Leasehold

EPC Energy Efficiency Rating: E





Key Features

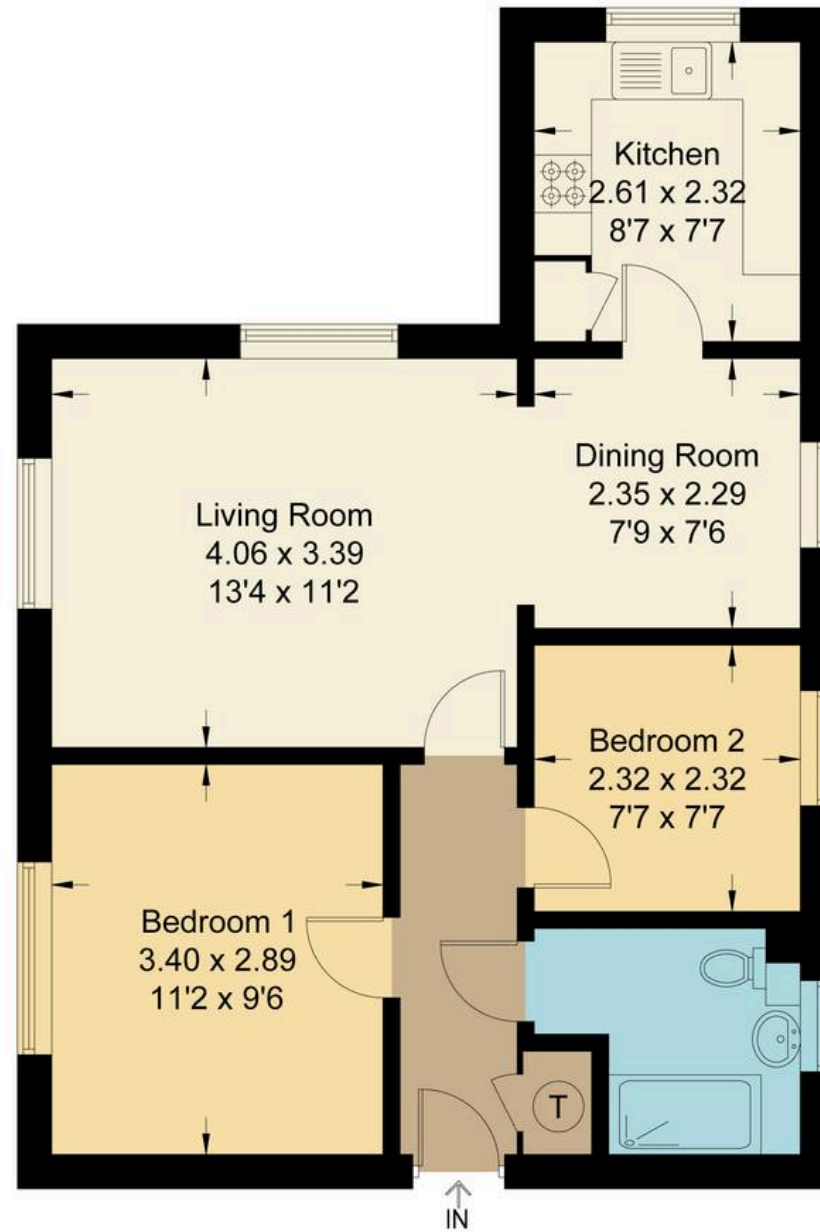
- Secure entrance leading to a spacious entrance hall
- Impressive and very light and airy double aspect living room through to dining room
- Stylishly refitted kitchen offering an excellent selection of floor and wall units complemented by several built-in electrical appliances
- Spacious main double bedroom and a second bedroom and stylishly refitted bathroom with contemporary white suite
- Double glazed windows, electric heating and the property is sold with no ongoing chain
- Allocated and visitors hard standing parking facilities complemented by well kept communal gardens
- Residents have a share of the freehold with a 125 year lease from 1988 and the service charges and ground rent are approximately £600 pa this includes the buildings insurance
- The entire flat has been fully redecorated with new floor coverings in all the main rooms



Field Gardens, OX13

Approximate Gross Internal Area = 51.70 sq m / 556 sq ft

For identification only - Not to scale



Ground Floor

Not to scale, for illustration and layout purposes only.
© Mortimer Photography. Produced for Hodsons.
Unauthorised reproduction prohibited

 **Hodsons**
your move, our passion
Sales | Lettings

5 Ock Street, Abingdon,
Oxfordshire, OX14 5AL
T: 01235 553686
E: abingdon@hodsons.co.uk
www.hodsons.co.uk