



## 67 Whitehouse Road

, Billingham, TS22 5AT

**£230,000**



Igomove is proud to present this exceptional three-bedroom semi-detached bungalow situated in the ever-popular Whitehouse Road area of Billingham. Positioned within close proximity to a vast array of amenities as well as Billingham's Golf Course just around the corner, this perfect home will certainly appeal to many buyers especially having undergone a comprehensive renovation including a full rewire, replacement windows, reconfigured layout and high-quality finishing throughout.

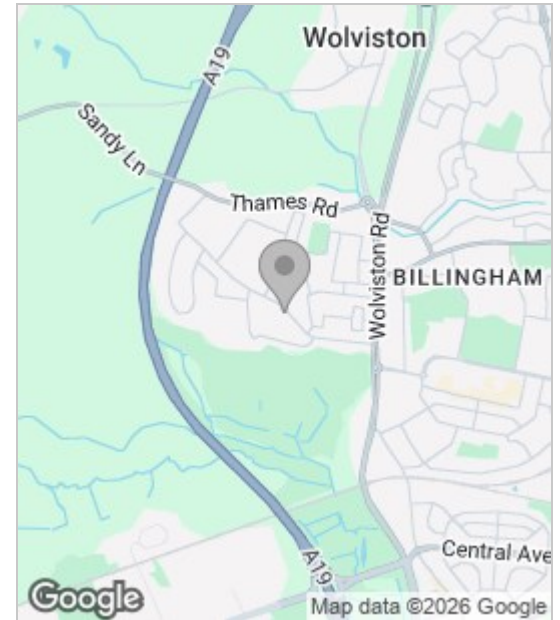


From the moment you arrive, the property immediately impresses with its attractive kerb appeal, generous driveway and garage located to the side. Internally, the attention to detail is evident in every room, combining contemporary design with practical family living. The welcoming entrance hallway features elegant wall panelling and laminate flooring which flows beautifully through the home. To the front of the property you find the heart of the home - the stunning open-plan kitchen/dining room, fitted with sleek navy cabinetry, integrated appliances, feature lighting and a central breakfast island perfect for entertaining and everyday family life. To the rear of the home is a spacious lounge with modern media wall styling and new French doors opening out onto the South/West facing rear garden, creating a bright and relaxing living space.

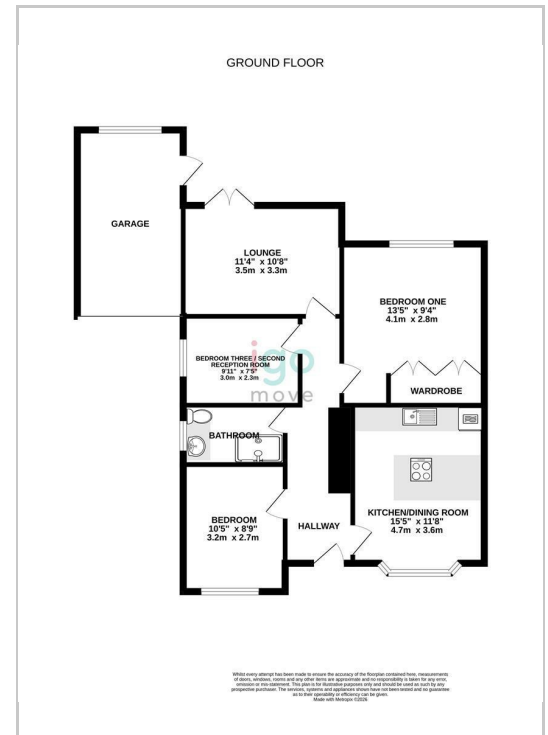
There are three well-proportioned bedrooms, including a generous master bedroom to rear aspect with fitted wardrobes, along with a spacious double bedroom and a versatile third bedroom offering flexibility for home working, dining or additional living space. The beautifully finished bathroom has been upgraded to a luxurious standard with contemporary fittings, walk-in shower and premium finishes throughout.

Externally, the property enjoys a private and enclosed South/West facing rear garden with decked seating area and lawn, ideal for outdoor entertaining and summer evenings. Make this home your own and book your viewing today. Igomove are open 7 days a week.

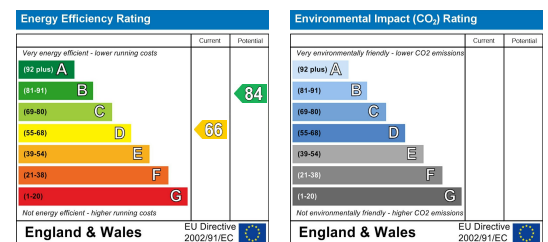
## Area Map



## Floor Plan



## Energy Efficiency Graph



These particulars, whilst believed to be accurate are set out as a general outline only for guidance and do not constitute any part of an offer or contract. Intending purchasers should not rely on them as statements of representation of fact, but must satisfy themselves by inspection or otherwise as to their accuracy. No person in this firm's employment has the authority to make or give any representation or warranty in respect of the property.