



## Room 4

Cecil Street | | Watford | WD24 5AS

£825 Per Month



**LEAFY  
ESTATES**

## Key features

- Approx. 12–15 minutes walk to Watford Junction Station
- Bright Double Ensuite Room in Watford WD24 - All Bills Included - Cecil Street
- Furnished High Standard

## Description

A well-maintained and professionally managed house share offering a bright double ensuite room situated on Cecil Street in Watford WD24. Ideal for working professionals seeking comfortable and private accommodation with excellent access to transport links, Watford town centre, and local amenities.

### THE ROOM

Designed to provide a comfortable and self-contained living space:

- Fully furnished double bedroom
- Private ensuite bathroom
- Wardrobe and storage space
- High-speed broadband (approximately 400 Mbps)
- Reliable heating and constant hot water
- Access to a large shared kitchen and an additional smaller kitchen

### ALL BILLS INCLUDED

The monthly rent includes:

- Council tax
- Electricity
- Gas
- Water
- Broadband

### LOCATION AND TRANSPORT

Conveniently located in Watford WD24:

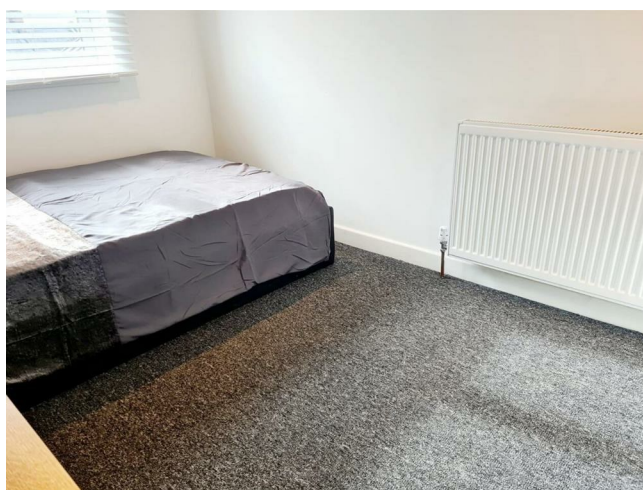
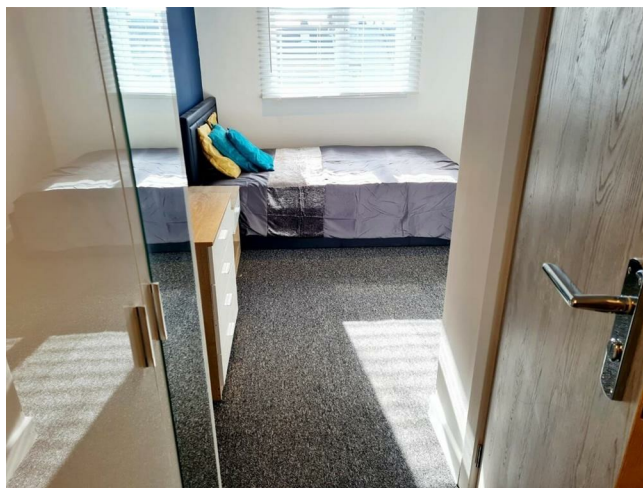
- Approx. 18–20 minutes walk to Langley House Community Hospital
- Approx. 12–15 minutes walk to Watford Junction Station with direct links to London
- Approx. 8 minutes walk to local shops and amenities
- Approx. 10 minutes walk to major supermarkets

Ideal for professionals commuting into London or working locally within Watford and surrounding areas.

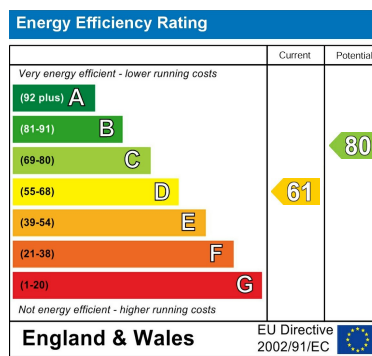
### PROPERTY FEATURES

- Professional mixed household

## Directions







Council Tax Band C    EPC Rating D



68 South Hill Avenue  
Harrow  
HA2 0NH  
02081501988  
info@leafyestates.co.uk  
leafyestates.co.uk