



Nottingham Terrace, NW1

£1,150,000

A modern one bedroom apartment located on the south side of Regent's Park. The property has a bright modern scheme, secure parking and a long lease.

Moments from Marylebone High Street and the amenities of the 400 acre Royal Park. The transport links of Baker Street are close by.

Features

- One En Suite Bedroom
- Open Plan Reception - Kitchen
- Fifth Floor With Lift
- 24 Hour Security
- Secure Underground Parking
- Access To Gardens



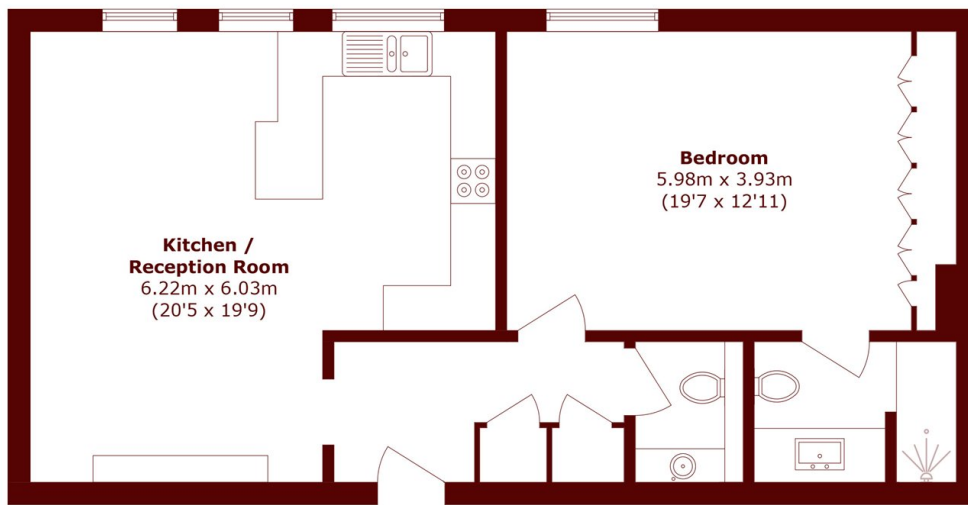
Nottingham Terrace, NW1

The property has a bright open plan living space with a combined reception, with space to dine and a modern kitchen. The bedroom suite has fitted wardrobes and an en-suite shower room. Additionally there is a guest WC.

Part of the Crown Estate the development is extremely well maintained with 24 hour security in front of the building. The flat also benefits from a designated underground parking space and a large private storage cupboard.



Nottingham Terrace, London, NW1



Total area (approx.): 74.7 sq. m (804.1 sq. ft)