



Adelphi Road, Epsom

Guide Price £650,000



Adelphi Road

Epsom

Charming chain free 3-bed double-fronted period house in town centre. Spacious rooms, 2 receptions, utility, 2 baths, courtyard garden, garage & driveway. Convenient location near amenities.

Council Tax band: D

Tenure: Freehold

EPC Energy Efficiency Rating: D

EPC Environmental Impact Rating: D

- Unique Double Fronted Period Property
- Heart of Town Centre
- Two Receptions
- Three Double Bedrooms
- Two Bathrooms
- Utility Room
- Courtyard Garden
- Minutes Walk To Station



Located in the heart of the bustling town centre, this unique double-fronted period property offers a rare opportunity to own a charming 3-bedroom semi-detached house that seamlessly blends historic character with modern amenities, benefiting from no onward chain.

Stepping inside, you are greeted by a warm and inviting ambience, with two spacious reception rooms boasting wooden flooring and ample natural light. A generous well-equipped kitchen provides a perfect space for preparing delicious meals for family and friends. Whilst adjacent to the kitchen is a convenient utility room, offering practical storage solutions and additional workspace.

On the first floor the property features three generously proportioned double bedrooms, perfect for a growing family or those in need of versatile living spaces and a well-appointed family bathroom, complete with modern fixtures and fittings.

Completing the interior layout is a ground floor shower room providing added convenience for residents and visitors alike.

Outside to the rear of the property is the courtyard garden, providing a tranquil outdoor space to enjoy a morning cup of coffee or evening glass of wine. The property also includes a detached garage and driveway, ensuring ample parking options.

One of the standout features of this property is its prime location, just minutes away from the town centre and a short walk to the local train station. This unparalleled convenience allows residents to easily access a wide range of amenities, including shops, restaurants, and transport links.

In summary, this 3-bedroom semi-detached house offers a unique opportunity to own a characterful period property in a highly sought-after location. With its spacious living areas, modern conveniences, and proximity to local amenities, this property is sure to appeal to those seeking a comfortable and convenient lifestyle. Contact us today to arrange a viewing and experience the charm of this exceptional home for yourself.

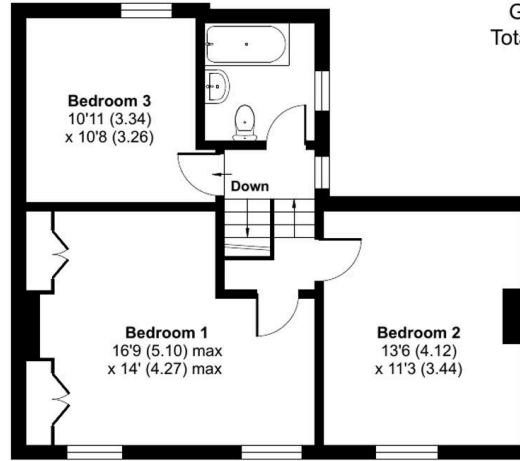
Adelphi Road, Epsom, KT17

Approximate Area = 1268 sq ft / 117.8 sq m

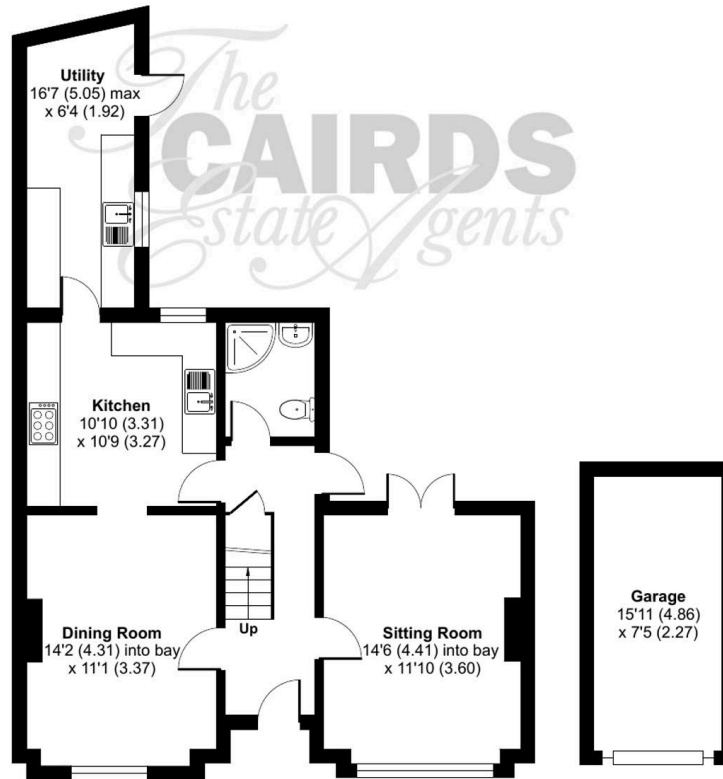
Garage = 119 sq ft / 11 sq m

Total = 1387 sq ft / 128.8 sq m

For identification only - Not to scale

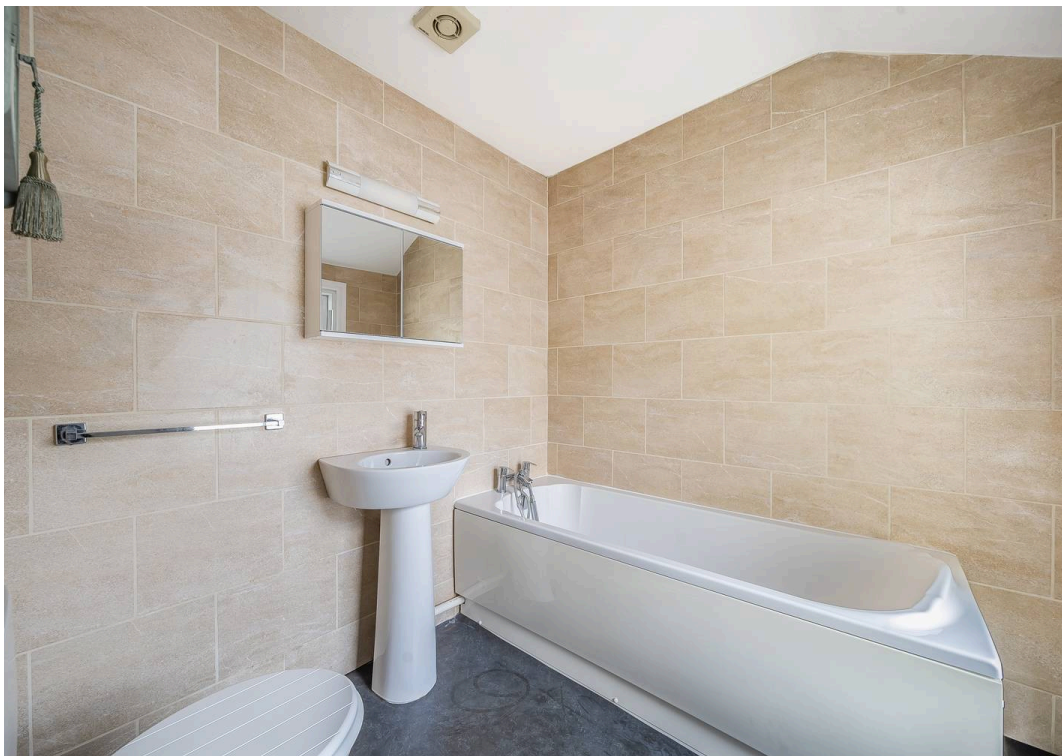


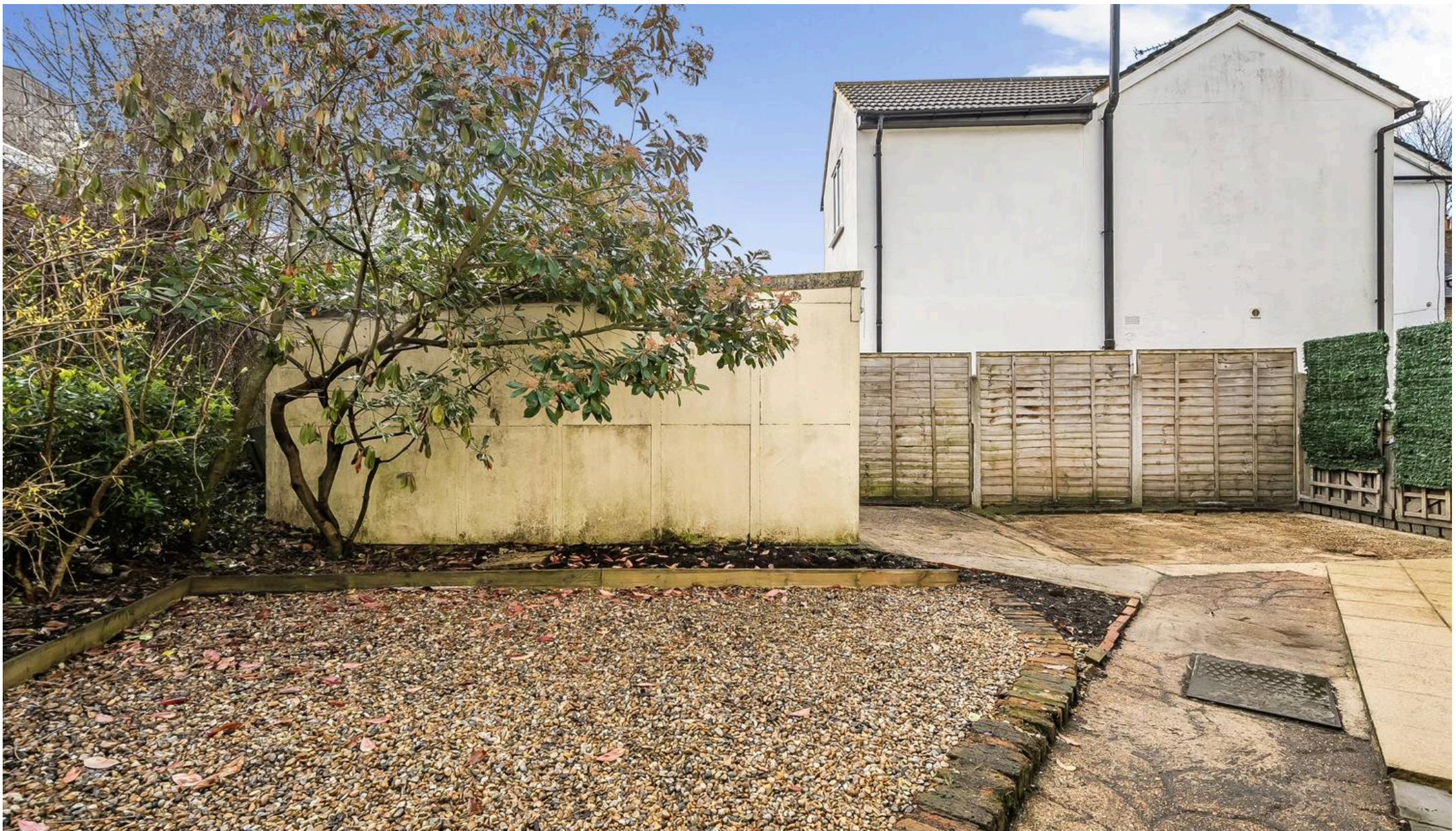
FIRST FLOOR



GROUND FLOOR







Cairds The Estate Agents

Cairds The Estate Agents, 128-130 High Street - KT19 8BT

01372 743033 • homes@cairds.co.uk • www.cairds.co.uk