



62 Redesdale Gardens

Isleworth, Isleworth

This well presented three-bedroom first floor maisonette is offered to the market with no forward chain. Ideally situated within a short walk of Syon Lane train station, Osterley Tube station, a range of excellent local schools and amenities, the property benefits from its own private entrance way, a bright and spacious reception room with bay window, two good sized double bedrooms, a further single bedroom/home office, modern family bathroom and a modern fitted kitchen.

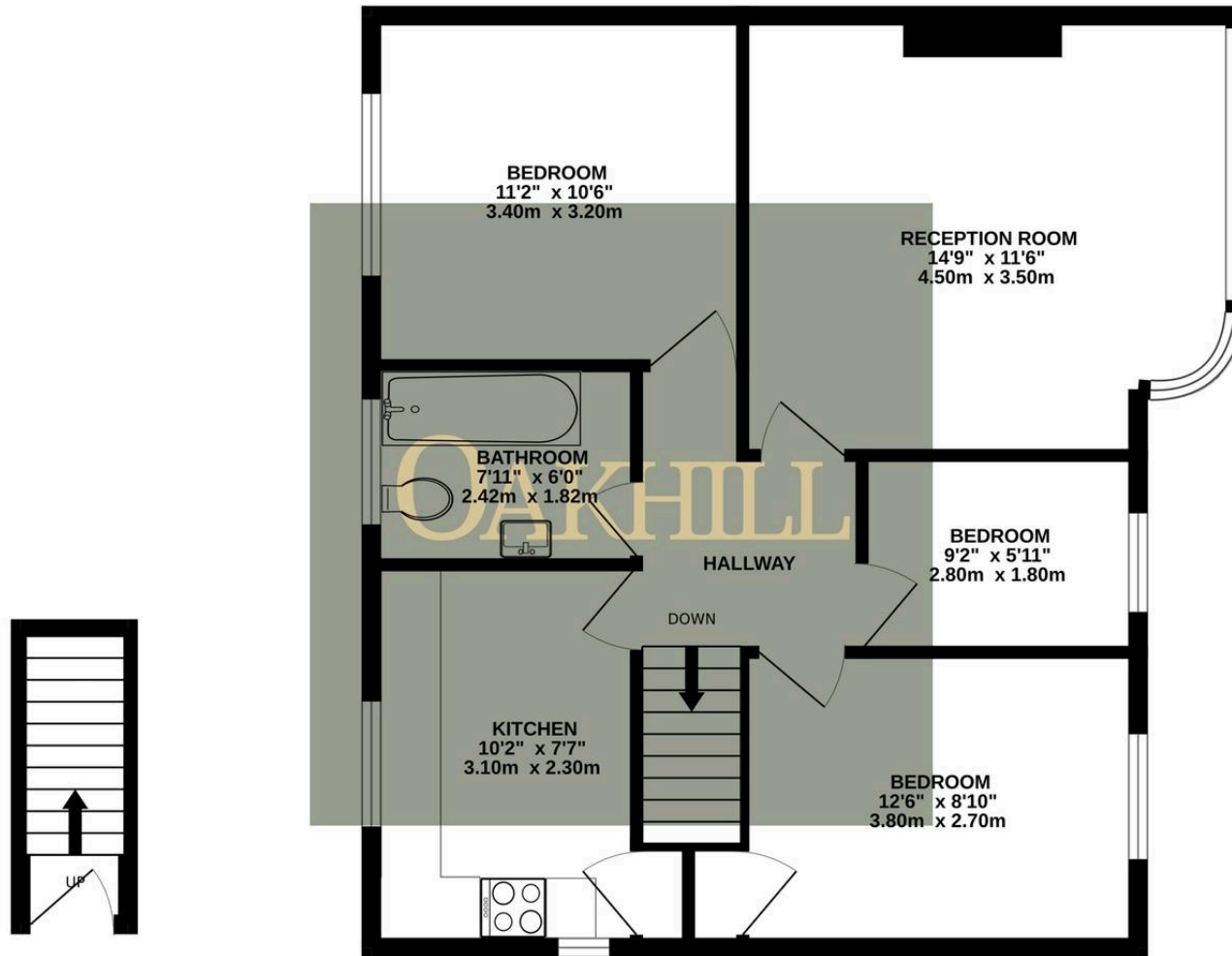
Tenure: Leasehold 900+ years

EPC Energy Efficiency Rating: C

EPC Environmental Impact Rating: C

- No Forward Chain
- Large Private Rear Garden
- Three Bedrooms
- Long Lease
- Close to Train Station
- Own Entranceway





TOTAL FLOOR AREA : 646sq.ft. (60.0 sq.m.) approx.

Whilst every attempt has been made to ensure the accuracy of the floorplan contained here, measurements of doors, windows, rooms and any other items are approximate and no responsibility is taken for any error, omission or mis-statement. This plan is for illustrative purposes only and should be used as such by any prospective purchaser. The services, systems and appliances shown have not been tested and no guarantee as to their operability or efficiency can be given.

Made with Metropix ©2025

