



Streatham Common North, SW16

£2,350 PCM

A three bedroom apartment overlooking Streatham Common, with two bathrooms and modern fitted kitchen. Ideal for three professional sharers.

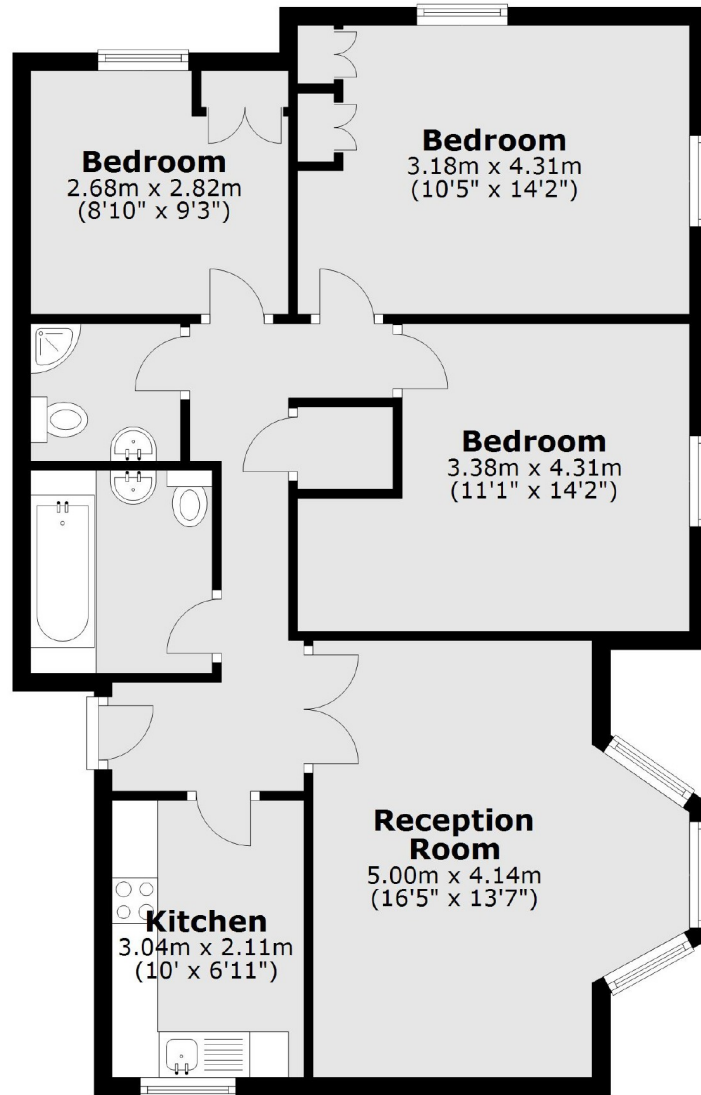
- Three bedrooms
- Two bathrooms
- Over looking Streatham Common
- Prime location
- Wooden flooring
- Energy rating: C

For further information on the costs associated with renting a property, please pop into our office or visit our website.



Streatham and Streatham Common train stations are easily accessible along with a number of large supermarkets, independent coffee shops and bars.





Total area: approx. 75.2 sq. metres (809.7 sq. feet)

Jacksons Streatham
1-3 De Montfort Parade
Streatham High Road
Streatham
London
SW16 1BU

Energy Rating: C We aim to make our particulars both accurate and reliable. However they are not guaranteed; nor do they form part of an offer or contract. If you require clarification on any points then please contact us, especially if you're traveling some distance to view. Please note that appliances and heating systems have not been tested and therefore no warranties can be given as to their good working order.