

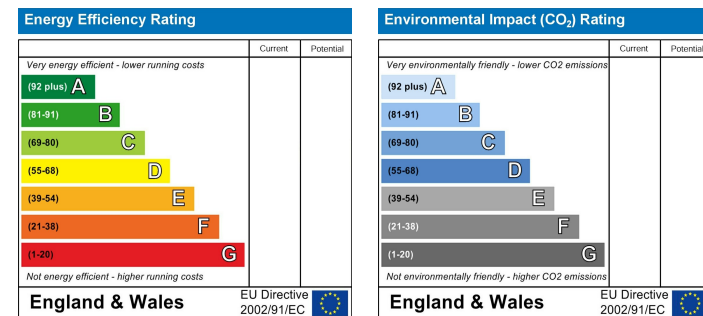
Location

£2,750 Per Month - 30th September 2026
Orchard Road, Sutton, SM1 2QA

Location Map



EPC Graph



Important Note

Centro Residential Sales and Lettings limited have not tested any services, heating system, electrical system, appliances, fixtures and fittings, that may be included in this property and would advise interested parties to satisfy themselves as to their condition or investigating the presence of any deleterious materials.

Viewing: Strictly by appointment through:

CENTRO RESIDENTIAL SALES AND LETTINGS LIMITED

Tel: 020 8401 5000

E-mail: residential@centro.plc.uk

See a selection of our properties at www.centro.plc.uk



Description

- Terraced Home
- Three Bedrooms
- Vaulted Ceiling
- Luxury Kitchen
- Private Garden
- Utility Room
- Bi-Fold Doors
- Additional Reception Room
- EPC Rating C
- Council Tax Band D

Features

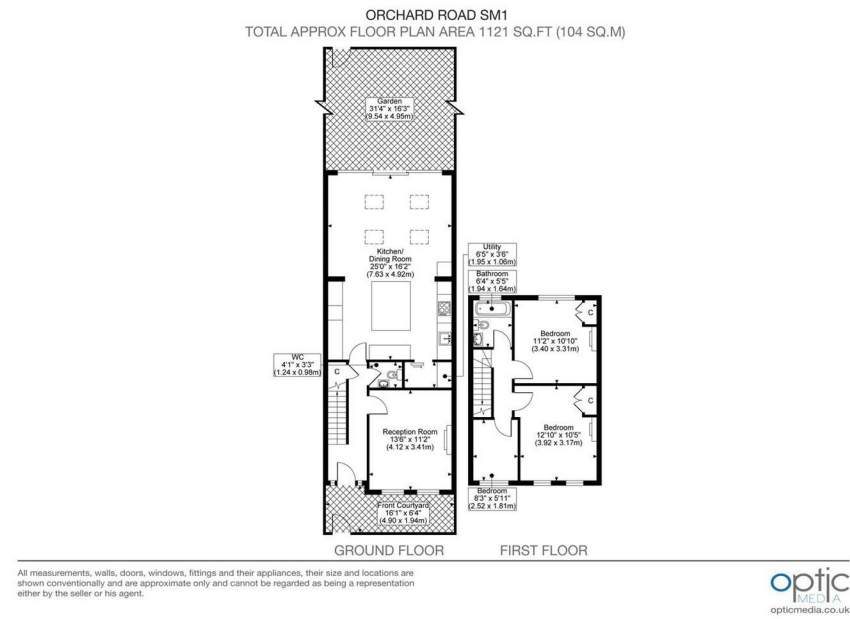
- Gas Central Heating
- Double Glazing
- Neutral Decor

What you need to know

- Term: 12 months
- Rent: £2750pcm exclusive of bills
- Security deposit: £3173.00
- Council Tax Band D
- Energy Rating: C



Floor Plan



For illustration purposes only



All dimensions and measurements are approximate and for guidance only.

Just Centro's Opinion...

A truly stunning and impeccably finished three-bedroom family home, ideally situated on a quiet residential road in Sutton. This beautifully presented property has been finished to an exceptional standard throughout and offers stylish, contemporary living, perfect for modern family life.

The heart of the home is the impressive open-plan kitchen and dining area, featuring a striking vaulted ceiling and large windows that flood the space with natural light, creating a wonderful sense of openness and elegance. The sleek, contemporary kitchen is finished to a high specification and benefits from a breakfast bar, quality integrated appliances, and an additional utility room for added convenience. Bi-fold doors open onto a private rear garden, complete with a patio seating area, an artificial lawn, a dedicated BBQ area, and a storage shed, making it the perfect space for relaxing and entertaining. The ground floor also offers a separate living room and a convenient downstairs WC.

Upstairs, the property comprises three well-proportioned bedrooms, including a generous principal bedroom with built-in storage, a spacious second double bedroom, and a comfortable single bedroom. A stylish, contemporary family bathroom completes the first floor.

Further benefits include permit parking on the road.

Additional Photos

