



Michael Road, SW6

£1,160 Per week

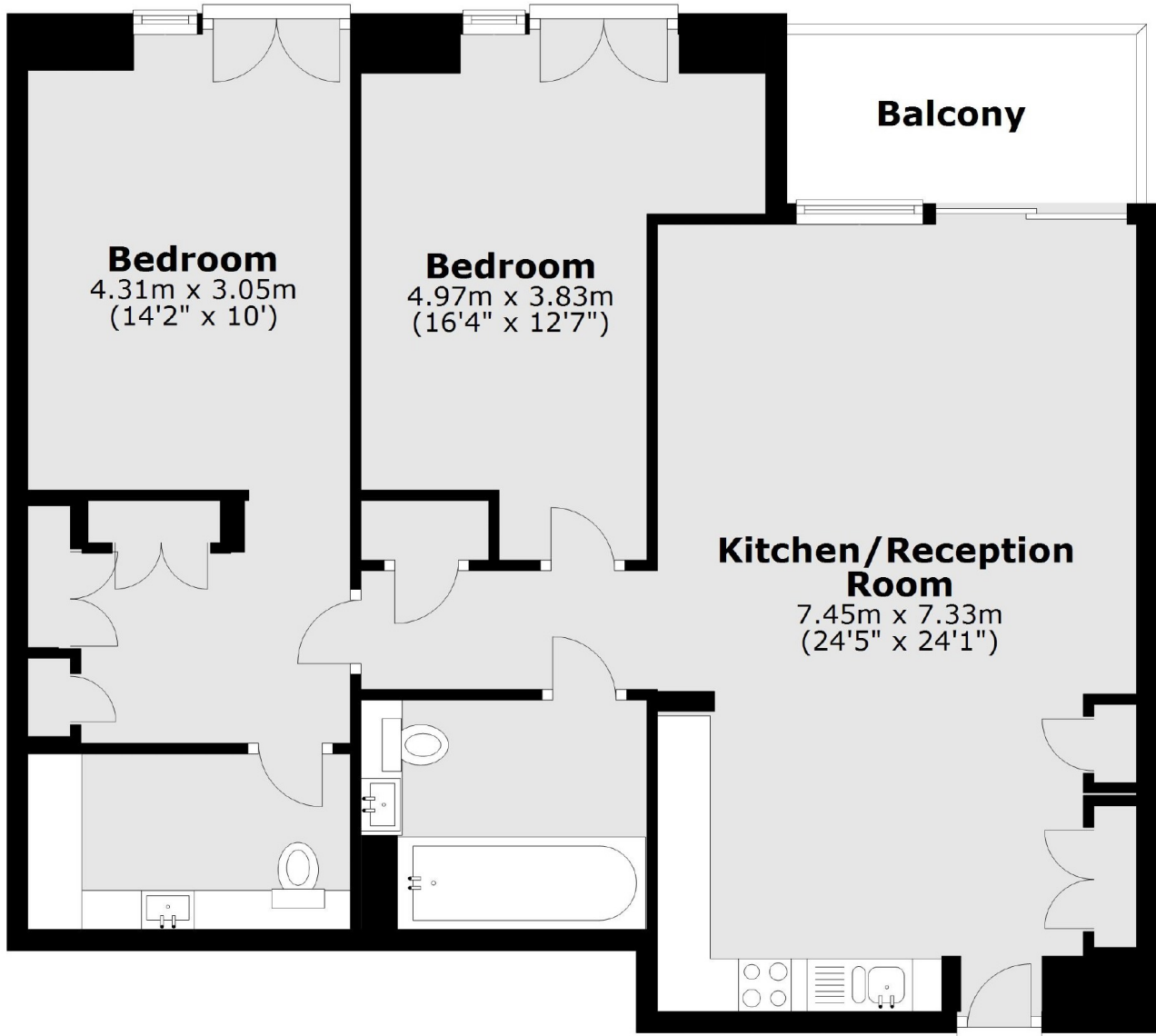
A stunning two double bedroom, two bathroom flat with a private balcony located within the secure King's Road Park development.

Ideally located for the local amenities of Imperial Wharf while there is a wide range of shops, bars and boutiques available on New King's Road.

Features

- Two Double Bedroom
- Furnished
- Swimming Pool
- Private Balcony
- 24hr Concierge
- Parking

Michael Road, London, SW6



Main area: Approx. 86.0 sq. metres (925.4 sq. feet)
Plus balconies, approx. 5.8 sq. metres (62.2 sq. feet)