



## Britton Street, EC1M

£800,000

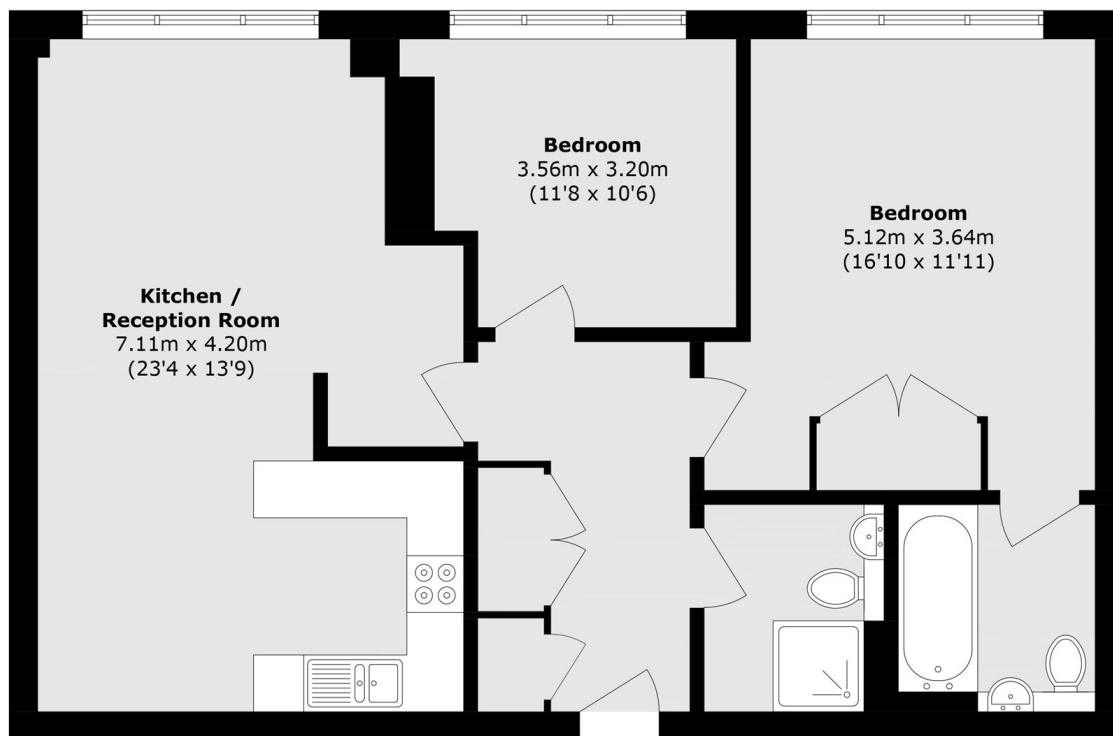
A bright, contemporary two-bedroom apartment, situated on the fifth floor overlooking the courtyard. The property boasts a spacious open-plan reception area featuring a modern, fully fitted kitchen. The primary bedroom includes extensive fitted wardrobes and a private en-suite bathroom, complemented by a generously proportioned second double bedroom. The home is further enhanced by expansive floor-to-ceiling windows throughout.

City Pavilion has access to a range of transport links. Farringdon underground and mainline station provides access to the Circle, Metropolitan, Hammersmith & City, National Rail and Elizabeth Line, making it one of the only stations in London that offers north-south as well as east-west connections. With great shopping and a tremendous diversity of acclaimed restaurants, bars, galleries and wine bars, Clerkenwell remains one of London's most sought-after and convenient locations.

### Features

- Two Bedrooms
- Two bathrooms
- Open Plan
- 24hr Concierge
- Built in Wardrobes
- Sought After Location

Britton Street,  
London, EC1M



Total area (approx.): 79.4 sq. m (800.8 sq. ft)