



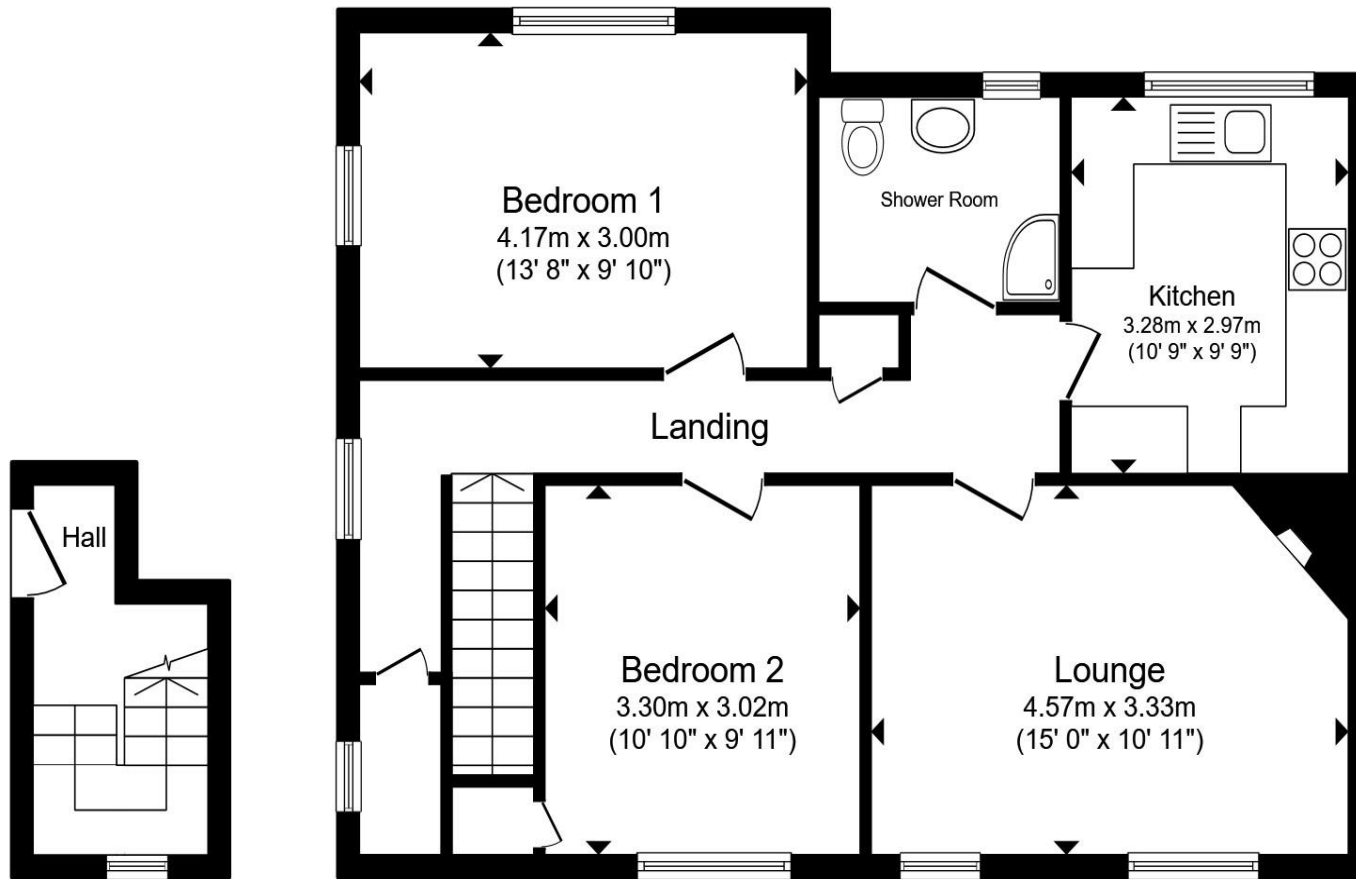
Stansfield Road, Lewes BN7 2SL

welcome to

Stansfield Road, Lewes

A well-presented home featuring a delightful, mature rear garden with a lawn, patio seating area and pergola, ideal for outdoor entertaining. The property offers two generously sized bedrooms, a comfortable lounge, fitted kitchen and a shower room, providing well-balanced and practical accommodation





Ground Floor

First Floor

Total floor area 71.0 m² (765 sq.ft.) approx

This floor plan is for illustrative purposes only. It is not drawn to scale. Any measurements, floor areas (including any total floor area), openings and orientation are approximate. No details are guaranteed, they cannot be relied upon for any purpose and they do not form part of any agreement. No liability is taken for any error, omission or misstatement. A party must rely upon its own inspection(s). Powered by www.propertybox.io



welcome to

Stansfield Road, Lewes

- Attractive and well-maintained rear garden
- Pergola with climbing plants
- Two well-proportioned bedrooms
- Practical and well-balanced first-floor layout
- 0.6 miles to Lewes High Street and 0.8 miles to Lewes train station.

Tenure: Leasehold EPC Rating: Awaiting

Council Tax Band: B Service Charge: 863.81

Ground Rent: 10.00

This is a Leasehold property. We are awaiting further details about the Term of the lease. For further information please contact the branch. Please note additional fees could be incurred for items such as Leasehold packs.

.....



Please note the marker reflects the postcode not the actual property

check out more properties at fox-and-sons.co.uk



Property Ref:
LEW106575 - 0002

1. MONEY LAUNDERING REGULATIONS Intending purchasers will be asked to produce identification documentation at a later stage and we would ask for your co-operation in order that there is no delay in agreeing the sale. 2. These particulars do not constitute part or all of an offer or contract. 3. The measurements indicated are supplied for guidance only and as such must be considered incorrect. Potential buyers are advised to recheck measurements before committing to any expense. 4. We have not tested any apparatus, equipment, fixtures or services and it is in the buyers interest to check the working condition of any appliances. 5. Where an EPC, or a Home Report (Scotland only) is held for this property, it is available for inspection at the branch by appointment. If you require a printed version of a Home Report, you will need to pay a reasonable production charge reflecting printing and other costs. 6. We are not able to offer an opinion either written or verbal on the content of these reports and this must be obtained from your legal representative. 7. Whilst we take care in preparing these reports, a buyer should ensure that his/her legal representative confirms as soon as possible all matters relating to title including the extent and boundaries of the property and other important matters before exchange of contracts.



01273 476378



Lewes@fox-and-sons.co.uk



192 High Street, LEWES, East Sussex, BN7 2NS



fox-and-sons.co.uk