

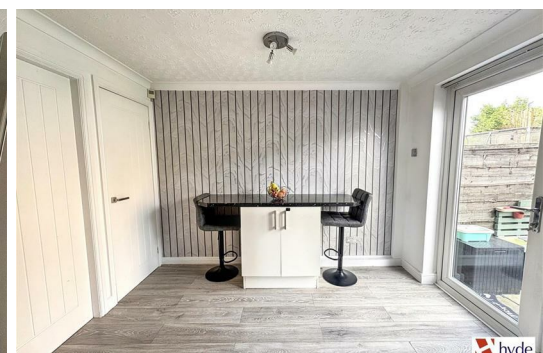


**6 Openshaw Fold Road, Bury
BL9 9ND**

£189,950

Hyde Estates are delighted to present this stone fronted, two bedroom mid mews house for sale. Built circa 1990, the property features well presented living accommodation throughout, gardens to the front and rear and private parking. Benefitting from a Freehold title this is an ideal opportunity for first time buyers looking for a semi rural location, whilst also having excellent links to nearby Bury Town Centre, Radcliffe and Manchester City Centre. Conveniently offered with no onward chain.

Openshaw Fold Road is located just off Radcliffe/Bury Road and is a quiet, cobbled cul de sac just a short stroll from Elton Reservoir. Other amenities include, shops, schools, Newbank Garden Centre and all that nearby Radcliffe and Bury Town Centre have to offer. An early viewing is highly recommended!



Accommodation

Briefly comprising; spacious lounge with feature fireplace, laminate flooring and stairs to first floor. The eat in kitchen features a range of white gloss wall and base units with contrasting worktops, inset sink unit with mixer tap and tiled splashbacks. Includes breakfast bar to seat two people and space for a small table and chairs. Integrated slimline dishwasher, washing machine and four ring gas hob with extractor hood. Space for a freestanding cooker and fridge freezer. Understairs store cupboard and French doors to the rear garden. From the first floor landing are two double bedrooms with the smaller of the two rear facing. The huge main bedroom benefits from fitted robes and built in storage. Fitted with a contemporary suite of; wc with concealed cistern, washbasin with storage drawers beneath and walk in mains operated double shower with rainfall head the shower room is fully tiled and features a frosted window and matt black fittings including heated towel rail.

Room Measurements

Lounge: 15'3" x 12'5"

Eat in Kitchen: 12'6" x 10'

Bedroom 1: 15'2" x 11'1" plus fitted robes

Bedroom 2: 10'5" x 6'6"

Shower room: 7'2" x 5'11"

Gardens

The property is garden fronted and benefits from a low maintenance rear garden with paved patio, astroturf lawn and fenced borders.

Parking

Private parking to the rear of the property.

Additional Information

The property is serviced by a wall mounted combi boiler and has uPVC double glazed windows throughout fitted circa 2021. Shower room refurbished in 2025.

Tenure

We understand from the Vendor that the property is FREEHOLD.

Council Tax

Bury Council, Band B.

Fixtures & Fittings

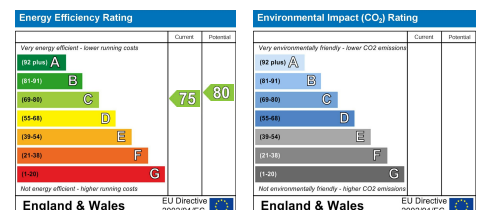
Carpets, curtains, and light fittings available by negotiation. We have not tested any appliances or electrical items.

Viewings

All viewings to be arranged via Hyde Estate and Letting Agents 0161 773 4583

Disclaimer

The information and images provided in this property advertisement are intended for guidance purposes only. While we make every effort to ensure the accuracy of the details, we strongly recommend that interested parties view the property in person to confirm the property's condition and suitability for their specific requirements. Any measurements or distances provided are approximate and should not be relied upon for any purpose.



1 St. Margarets Road, Prestwich, Manchester, M25 2QB